

K-cadherin Polyclonal Antibody

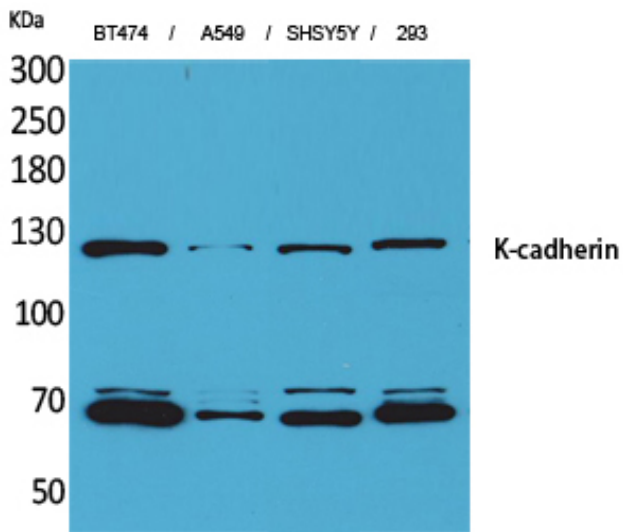
Catalog_no :	AT5111
Applications :	WB,IHC-p,ELISA
Reactivity :	Human,Mouse,Rat
Category :	抗原抗体
Size :	100µg/50µg/20µg
Gene_name :	CDH6
Protein_name :	Cadherin-6
Humangene_id :	1004
Humanswissprot_no :	P55285
Mousegene_id :	12563
Mouseswissprot_no :	P97326
Ratgene_id :	25409
Ratswissprot_no :	P55280
Immunogen :	Synthesized peptide derived from K-cadherin . at AA range: 180-260
Specificity :	K-cadherin Polyclonal Antibody detects endogenous levels of K-cadherin protein.
Formulation :	Liquid in PBS containing 50% glycerol, 0.5% BSA and 0.02% sodium azide.
Source :	Rabbit
Dilution :	Western Blot: 1/500 - 1/2000. IHC-p: 1:100-300 ELISA: 1/20000. Not yet tested in other applications.
Purification :	The antibody was affinity-purified from rabbit antiserum by affinity-chromatography using epitope-specific immunogen.
Concentration :	1 mg/ml
Storage_stability :	-20°C/1 year
Msds :	MSDS_Antibody.pdf



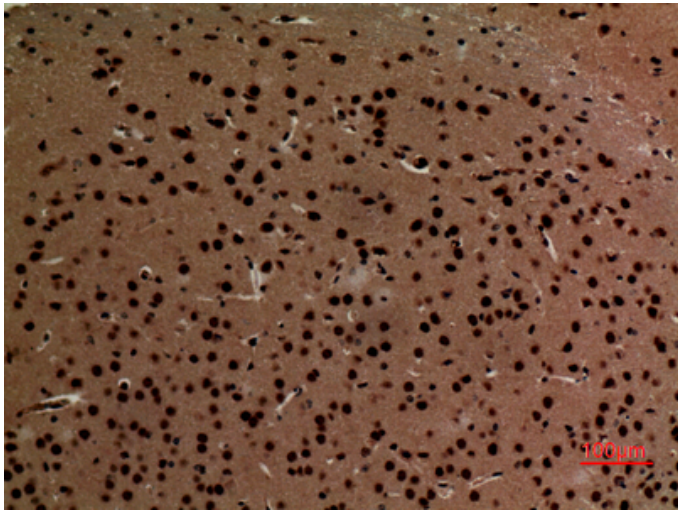
Other_name : CDH6; Cadherin-6; Kidney cadherin; K-cadherin

Molecular Weight : 88KD

Product Images



Western Blot analysis of BT474, A549, SHSY5Y, 293 cells using K-cadherin Polyclonal Antibody.. Secondary antibody was diluted at 1:20000



Immunohistochemical analysis of paraffin-embedded mouse-brain, antibody was diluted at 1:100