

Fractalkine Receptor Polyclonal Antibody

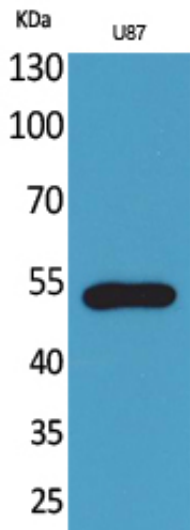
Catalog_no :	<u>AT5112</u>
Applications :	<u>WB,IHC-p,ELISA</u>
Reactivity :	<u>Human,Mouse,Rat</u>
Category :	<u>抗原抗体</u>
Size :	<u>100µg/50µg/20µg</u>
Gene_name :	<u>CX3CR1</u>
Protein_name :	<u>CX3C chemokine receptor 1</u>
Humangene_id	<u>1524</u>
:	<u></u>
Humanswissprot	<u>P49238</u>
_no :	<u></u>
Mousegene_id :	<u>13051</u>
Mouseswissprot	<u>Q9Z0D9</u>
_no :	<u></u>
Ratgene_id :	<u>171056</u>
Ratswissprot_no	<u>P35411</u>
:	<u></u>
Immunogen :	<u>Synthesized peptide derived from Fractalkine Receptor . at AA range: 120-200</u>
Specificity :	<u>Fractalkine Receptor Polyclonal Antibody detects endogenous levels of Fractalkine Receptor protein.</u>
Formulation :	<u>Liquid in PBS containing 50% glycerol, 0.5% BSA and 0.02% sodium azide.</u>
Source :	<u>Rabbit</u>
Dilution :	<u>Western Blot: 1/500 - 1/2000. IHC-p: 1:100-300 ELISA: 1/20000. Not yet tested in other applications.</u>
Purification :	<u>The antibody was affinity-purified from rabbit antiserum by affinity-chromatography using epitope-specific immunogen.</u>
Concentration :	<u>1 mg/ml</u>
Storage_stability	<u>-20°C/1 year</u>
:	<u></u>
Msds :	<u>MSDS_Antibody.pdf</u>



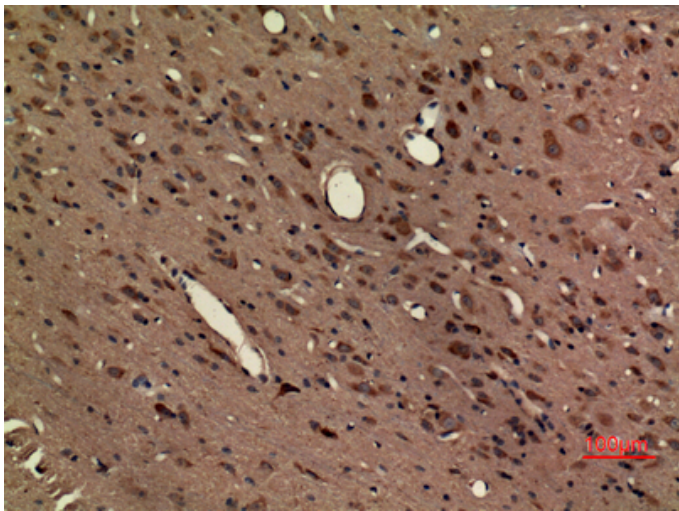
Other_name : CX3CR1; CMKBRL1; GPR13; CX3C chemokine receptor 1; C-X3-C CKR-1; CX3CR1; Beta chemokine receptor-like 1; CMK-BRL-1; CMK-BRL1; Fractalkine receptor; G-protein coupled receptor 13; V28

Molecular Weight : 40KD

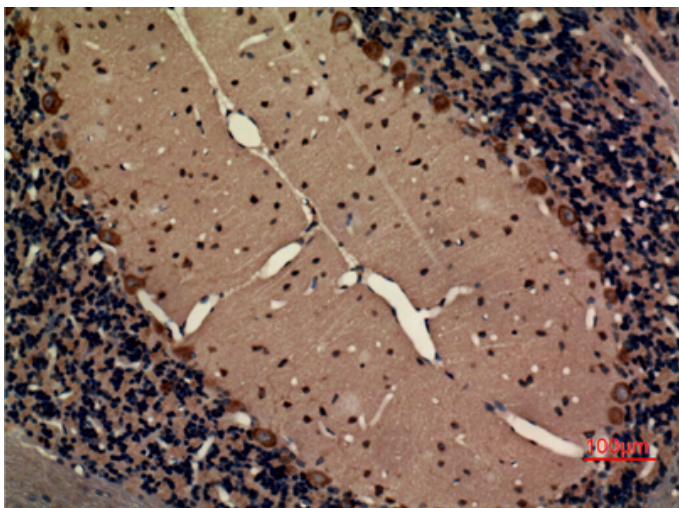
Product Images



Western Blot analysis of U87 cells using Fractalkine Receptor Polyclonal Antibody.. Secondary antibody was diluted at 1:20000



Immunohistochemical analysis of paraffin-embedded rat-brain, antibody was diluted at 1:100



Immunohistochemical analysis of paraffin-embedded rat-brain, antibody was diluted at 1:100

Immunohistochemical analysis of paraffin-embedded rat-brain, antibody was diluted at 1:100

