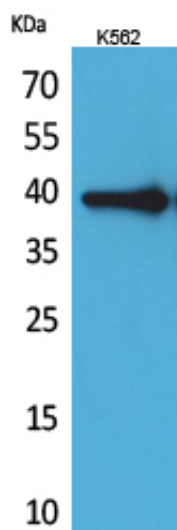


HSP77/76 Polyclonal Antibody

| | |
|---------------------|---|
| Catalog_no : | AT5114 |
| Applications : | WB,ELISA |
| Reactivity : | Human |
| Category : | 抗原抗体 |
| Size : | 100µg/50µg/20µg |
| Gene_name : | HSPA6/HSPA7 |
| Protein_name : | Heat shock 70 kDa protein 6/Putative heat shock 70 kDa protein 7 |
| Humangene_id : | 3310 |
| Humanswissprot_no : | P48741 |
| Immunogen : | Synthesized peptide derived from the Internal region of human HSP77/76. |
| Specificity : | HSP77/76 Polyclonal Antibody detects endogenous levels of HSP77/76 protein. |
| Formulation : | Liquid in PBS containing 50% glycerol, 0.5% BSA and 0.02% sodium azide. |
| Source : | Rabbit |
| Dilution : | Western Blot: 1/500 - 1/2000. ELISA: 1/20000. Not yet tested in other applications. |
| Purification : | The antibody was affinity-purified from rabbit antiserum by affinity-chromatography using epitope-specific immunogen. |
| Concentration : | 1 mg/ml |
| Storage_stability : | -20°C/1 year |
| Msds : | MSDS_Antibody.pdf |
| Other_name : | HSPA7; HSP70B; Putative heat shock 70 kDa protein 7; Heat shock 70 kDa protein B; HSPA6; HSP70B'; Heat shock 70 kDa protein 6; Heat shock 70 kDa protein B' |
| Molecular Weight : | 40KD |

Product Images



Western Blot analysis of K562 cells using HSP77/76 Polyclonal Antibody.. Secondary antibody was diluted at 1:20000