



JAM-B Polyclonal Antibody

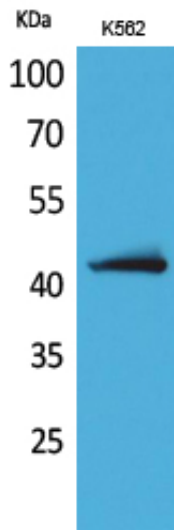
Catalog_no :	AT5115
Applications :	WB,IHC-p,ELISA
Reactivity :	Human,Mouse,Rat
Category :	抗原抗体
Size :	100µg/50µg/20µg
Gene_name :	JAM2
Protein_name :	Junctional adhesion molecule B
Humangene_id :	58494
Humanswissprot_no :	P57087
Mousegene_id :	67374
Mouseswissprot_no :	Q9JI59
Immunogen :	Synthesized peptide derived from the Internal region of human JAM-B.
Specificity :	JAM-B Polyclonal Antibody detects endogenous levels of JAM-B protein.
Formulation :	Liquid in PBS containing 50% glycerol, 0.5% BSA and 0.02% sodium azide.
Source :	Rabbit
Dilution :	Western Blot: 1/500 - 1/2000. IHC-p: 1:100-300 ELISA: 1/20000. Not yet tested in other applications.
Purification :	The antibody was affinity-purified from rabbit antiserum by affinity-chromatography using epitope-specific immunogen.
Concentration :	1 mg/ml
Storage_stability :	-20°C/1 year
Msds :	MSDS_Antibody.pdf
Other_name :	JAM2; C21orf43; VEJAM; Junctional adhesion molecule B; JAM-B; Junctional adhesion molecule 2; JAM-2; Vascular endothelial junction-associated molecule; VE-JAM; CD322
Molecular Weight :	33KD



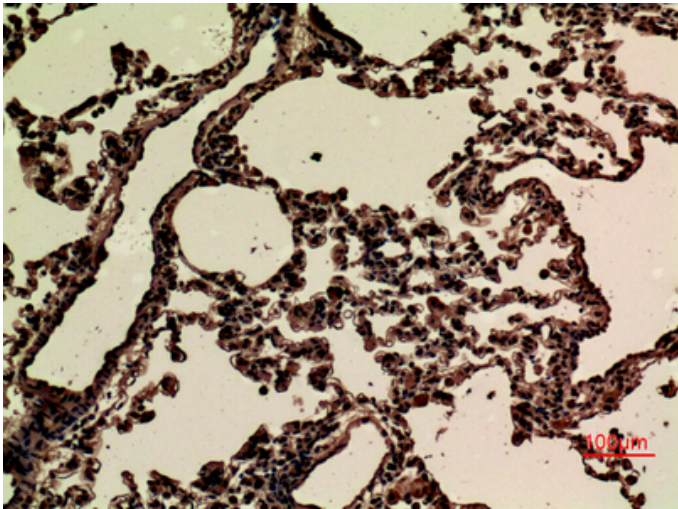
专注二抗产品

Biodragon旗下品牌

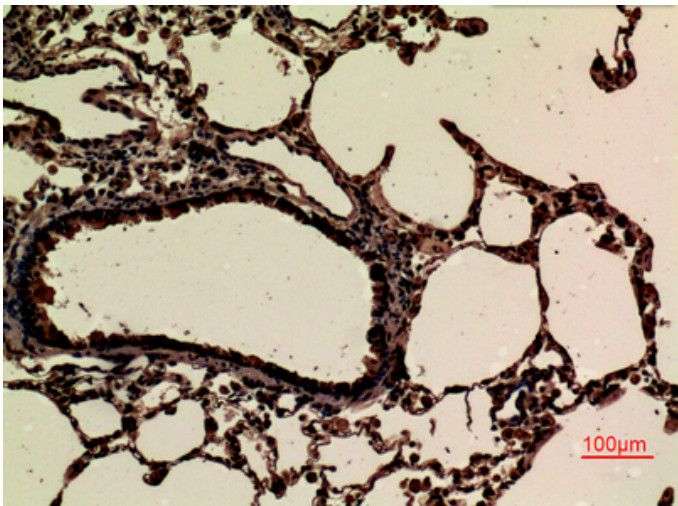
Product Images



Western Blot analysis of K562 cells using JAM-B Polyclonal Antibody.. Secondary antibody was diluted at 1:20000

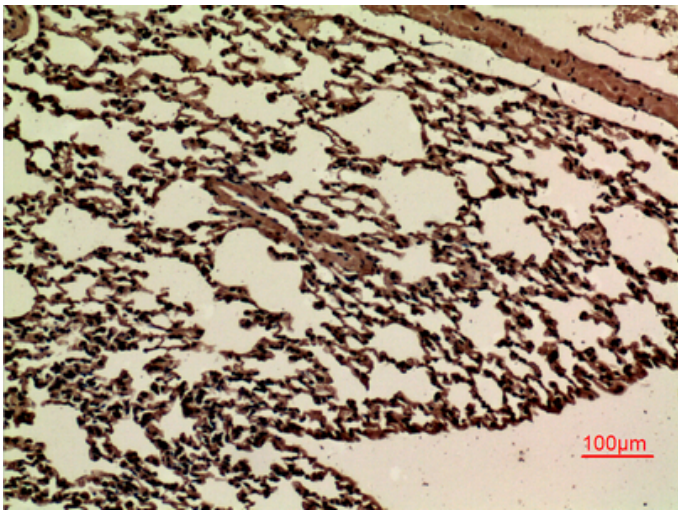
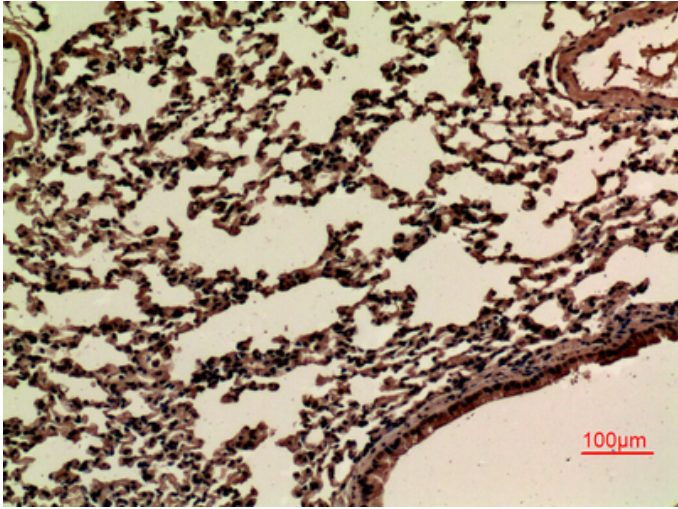


Immunohistochemical analysis of paraffin-embedded rat-lung, antibody was diluted at 1:100



Immunohistochemical analysis of paraffin-embedded rat-lung, antibody was diluted at 1:100

Immunohistochemical analysis of paraffin-embedded mouse-lung, antibody was diluted at 1:100



Immunohistochemical analysis of paraffin-embedded mouse-lung, antibody was diluted at 1:100