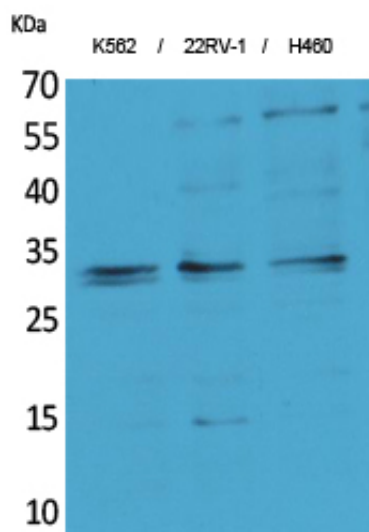




SCP-3 Polyclonal Antibody

Catalog_no :	<u>AT5117</u>
Applications :	<u>WB,ELISA</u>
Reactivity :	<u>Human,Mouse</u>
Category :	<u>抗原抗体</u>
Size :	<u>100µg/50µg/20µg</u>
Gene_name :	<u>SYCP3</u>
Protein_name :	<u>Synaptonemal complex protein 3</u>
Humangene_id	<u>50511</u>
:	<u></u>
Humanswissprot	<u>Q8IZU3</u>
_no :	<u></u>
Mousegene_id :	<u>20962</u>
Mouseswissprot	<u>P70281</u>
_no :	<u></u>
Immunogen :	<u>Synthesized peptide derived from the Internal region of human SCP-3.</u>
Specificity :	<u>SCP-3 Polyclonal Antibody detects endogenous levels of SCP-3 protein.</u>
Formulation :	<u>Liquid in PBS containing 50% glycerol, 0.5% BSA and 0.02% sodium azide.</u>
Source :	<u>Rabbit</u>
Dilution :	<u>Western Blot: 1/500 - 1/2000. ELISA: 1/20000. Not yet tested in other applications.</u>
Purification :	<u>The antibody was affinity-purified from rabbit antiserum by affinity-chromatography using epitope-specific immunogen.</u>
Concentration :	<u>1 mg/ml</u>
Storage_stability	<u>-20°C/1 year</u>
:	<u></u>
Msds :	<u>MSDS_Antibody.pdf</u>
Other_name :	<u>SYCP3; SCP3; Synaptonemal complex protein 3; SCP-3</u>
Molecular	<u>27KD</u>
Weight :	<u></u>

Product Images



Western Blot analysis of K562, 22RV-1, H460 cells using SCP-3 Polyclonal Antibody.. Secondary antibody was diluted at 1:20000 cells nucleus extracted by Minute TM Cytoplasmic and Nuclear Fractionation kit (SC-003, Inventbiotech, MN, USA).