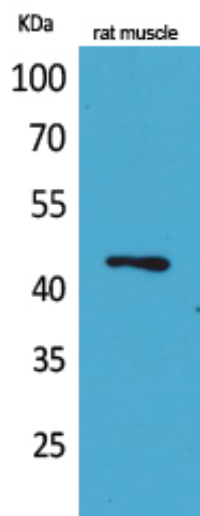


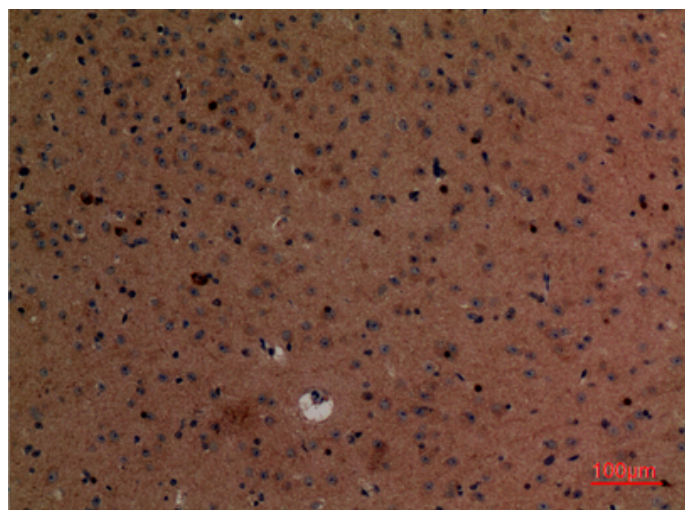
## KLF12 Polyclonal Antibody

Catalog_no :	AT5119
Applications :	WB,IHC-p,ELISA
Reactivity :	Human,Mouse
Category :	抗原抗体
Size :	100µg/50µg/20µg
Gene_name :	KLF12
Protein_name :	Krüppel-like factor 12
Humangene_id :	<a href="#">11278</a>
Humanswissprot_no :	<a href="#">Q9Y4X4</a>
Mousegene_id :	<a href="#">16597</a>
Mouseswissprot_no :	<a href="#">O35738</a>
Immunogen :	Synthesized peptide derived from the Internal region of human KLF12.
Specificity :	KLF12 Polyclonal Antibody detects endogenous levels of KLF12 protein.
Formulation :	Liquid in PBS containing 50% glycerol, 0.5% BSA and 0.02% sodium azide.
Source :	Rabbit
Dilution :	Western Blot: 1/500 - 1/2000. IHC-p: 1:100-300 ELISA: 1/20000. Not yet tested in other applications.
Purification :	The antibody was affinity-purified from rabbit antiserum by affinity-chromatography using epitope-specific immunogen.
Concentration :	1 mg/ml
Storage_stability :	-20°C/1 year
Msdn :	MSDS_Antibody.pdf
Other_name :	KLF12; AP2REP; HSPC122; Krüppel-like factor 12; Transcriptional repressor AP-2rep
Molecular Weight :	44KD

## Product Images



Western Blot analysis of rat muscle cells using KLF12 Polyclonal Antibody.. Secondary antibody was diluted at 1:20000 cells nucleus extracted by Minute TM Cytoplasmic and Nuclear Fractionation kit (SC-003, Invent biotech, MN, USA).



Immunohistochemical analysis of paraffin-embedded mouse-brain, antibody was diluted at 1:100