

## Contactin 1 Polyclonal Antibody

Catalog_no :	<u>AT5122</u>
Applications :	<u>WB,ELISA</u>
Reactivity :	<u>Human,Mouse,Rat</u>
Category :	<u>抗原抗体</u>
Size :	<u>100µg/50µg/20µg</u>
Gene_name :	<u>CNTN1</u>
Protein_name :	<u>Contactin-1</u>
Humangene_id	<u><a href="#">1272</a></u>
:	<u></u>
Humanswissprot	<u><a href="#">Q12860</a></u>
_no :	<u></u>
Mousegene_id :	<u><a href="#">12805</a></u>
Mouseswissprot	<u><a href="#">P12960</a></u>
_no :	<u></u>
Ratgene_id :	<u><a href="#">117258</a></u>
Ratswissprot_no	<u><a href="#">Q63198</a></u>
:	<u></u>
Immunogen :	<u>Synthesized peptide derived from the N-terminal region of human Contactin 1.</u>
Specificity :	<u>Contactin 1 Polyclonal Antibody detects endogenous levels of Contactin 1 protein.</u>
Formulation :	<u>Liquid in PBS containing 50% glycerol, 0.5% BSA and 0.02% sodium azide.</u>
Source :	<u>Rabbit</u>
Dilution :	<u>Western Blot: 1/500 - 1/2000. ELISA: 1/20000. Not yet tested in other applications.</u>
Purification :	<u>The antibody was affinity-purified from rabbit antiserum by affinity-chromatography using epitope-specific immunogen.</u>
Concentration :	<u>1 mg/ml</u>
Storage_stability	<u>-20°C/1 year</u>
:	<u></u>
Msds :	<u><a href="#">MSDS_Antibody.pdf</a></u>
Other_name :	<u>CNTN1; Contactin-1; Glycoprotein gp135; Neural cell surface protein F3</u>

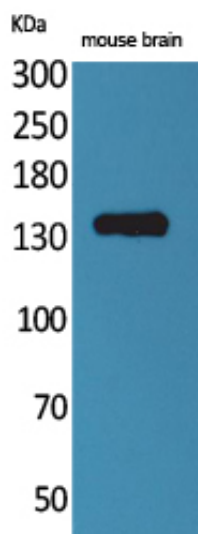


Molecular  
Weight :

113KD

---

## Product Images



Western Blot analysis of mouse brain cells using Contactin 1 Polyclonal Antibody.. Secondary antibody was diluted at 1:20000