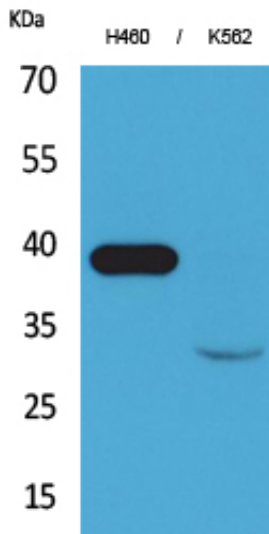




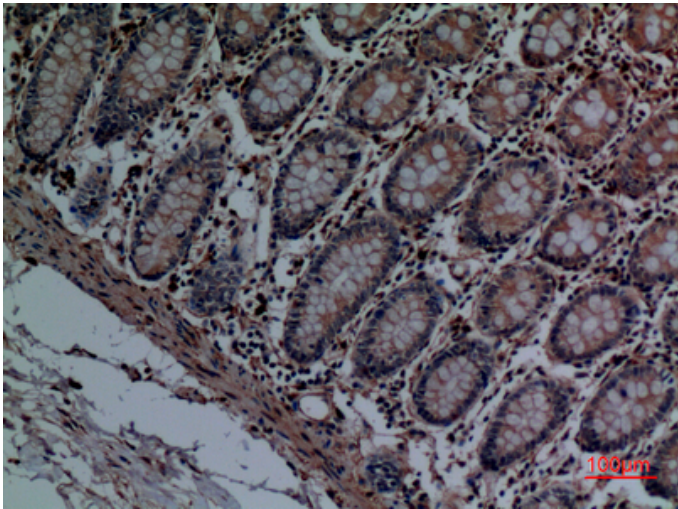
Cathepsin L Polyclonal Antibody

| | |
|---------------------|---|
| Catalog_no : | AT5124 |
| Applications : | WB,IHC-p,ELISA |
| Reactivity : | Human |
| Category : | 抗原抗体 |
| Size : | 100µg/50µg/20µg |
| Gene_name : | CTSL1 |
| Protein_name : | Cathepsin L1 |
| Humangene_id : | 1514 |
| Humanswissprot_no : | P07711 |
| Immunogen : | Synthesized peptide derived from the Internal region of human Cathepsin L. |
| Specificity : | Cathepsin L Polyclonal Antibody detects endogenous levels of Cathepsin L protein. |
| Formulation : | Liquid in PBS containing 50% glycerol, 0.5% BSA and 0.02% sodium azide. |
| Source : | Rabbit |
| Dilution : | Western Blot: 1/500 - 1/2000. IHC-p: 1:100-300 ELISA: 1/20000. Not yet tested in other applications. |
| Purification : | The antibody was affinity-purified from rabbit antiserum by affinity-chromatography using epitope-specific immunogen. |
| Concentration : | 1 mg/ml |
| Storage_stability : | -20°C/1 year |
| Msds : | MSDS_Antibody.pdf |
| Other_name : | CTSL1; CTSL; Cathepsin L1; Major excreted protein; MEP |
| Molecular Weight : | 37KD |

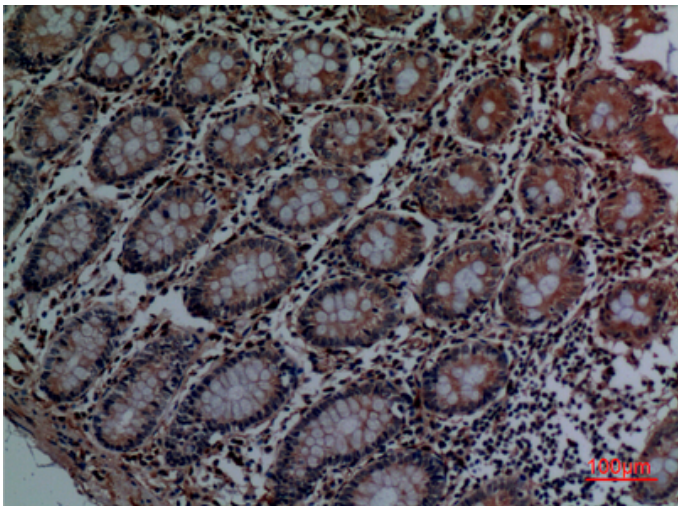
Product Images



Western Blot analysis of H460, K562 cells using Cathepsin L Polyclonal Antibody.. Secondary antibody was diluted at 1:20000

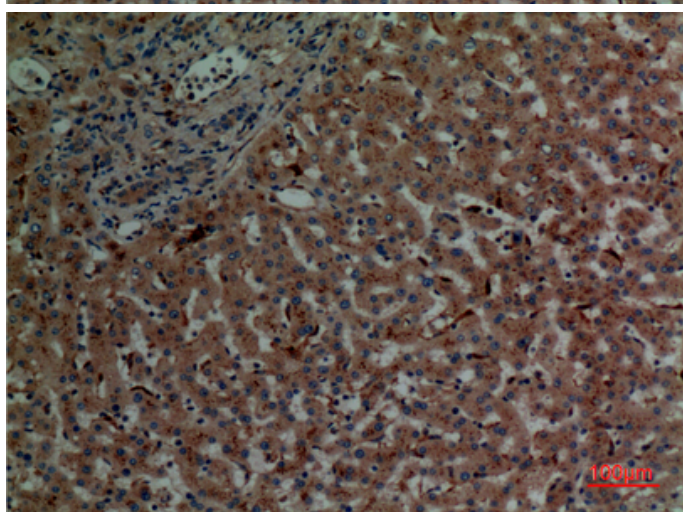
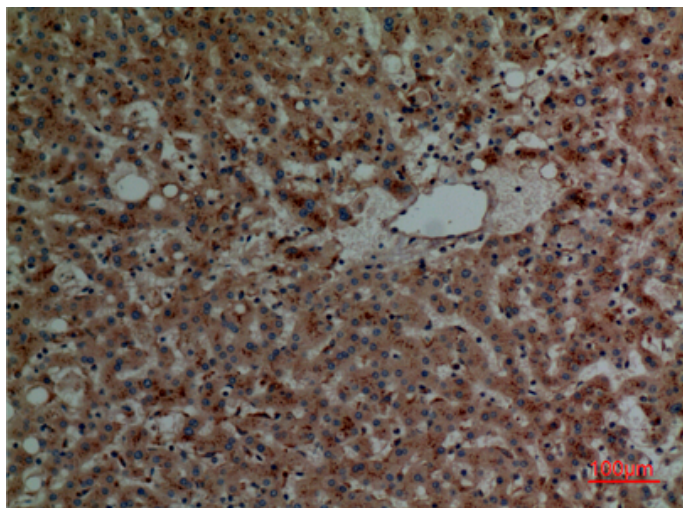


Immunohistochemical analysis of paraffin-embedded human-colon, antibody was diluted at 1:100



Immunohistochemical analysis of paraffin-embedded human-colon, antibody was diluted at 1:100

Immunohistochemical analysis of paraffin-embedded human-liver, antibody was diluted at 1:100



Immunohistochemical analysis of paraffin-embedded human-liver, antibody was diluted at 1:100