

Prothrombin Polyclonal Antibody

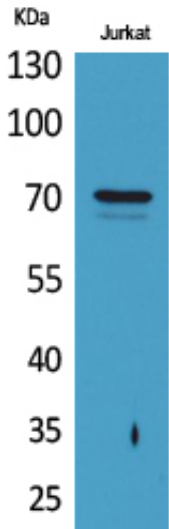
| | |
|---------------------|---|
| Catalog_no : | AT5126 |
| Applications : | WB,IHC-p,ELISA |
| Reactivity : | Human,Mouse,Rat |
| Category : | 抗原抗体 |
| Size : | 100µg/50µg/20µg |
| Gene_name : | F2 |
| Protein_name : | Prothrombin |
| Humangene_id : | 2147 |
| Humanswissprot_no : | P00734 |
| Mousegene_id : | 14061 |
| Mouseswissprot_no : | P19221 |
| Ratswissprot_no : | P18292 |
| Immunogen : | Synthesized peptide derived from the Internal region of human Prothrombin. |
| Specificity : | Prothrombin Polyclonal Antibody detects endogenous levels of Prothrombin protein. |
| Formulation : | Liquid in PBS containing 50% glycerol, 0.5% BSA and 0.02% sodium azide. |
| Source : | Rabbit |
| Dilution : | Western Blot: 1/500 - 1/2000. IHC-p: 1:100-300 ELISA: 1/20000. Not yet tested in other applications. |
| Purification : | The antibody was affinity-purified from rabbit antiserum by affinity-chromatography using epitope-specific immunogen. |
| Concentration : | 1 mg/ml |
| Storage_stability : | -20°C/1 year |
| Msds : | MSDS_Antibody.pdf |
| Other_name : | F2; Prothrombin; Coagulation factor II |



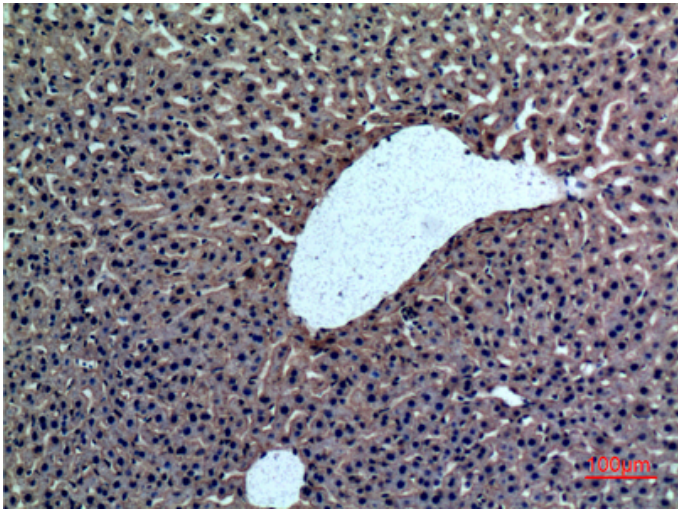
Molecular
Weight :

70KD

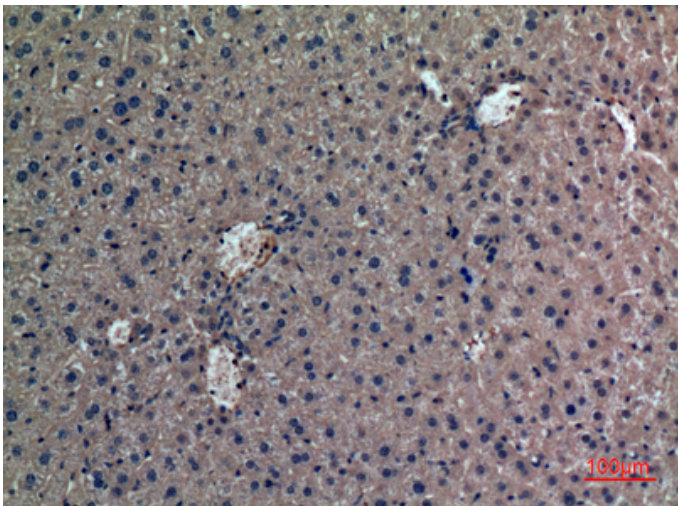
Product Images



Western Blot analysis of Jurkat cells using Prothrombin Polyclonal Antibody.. Secondary antibody was diluted at 1:20000

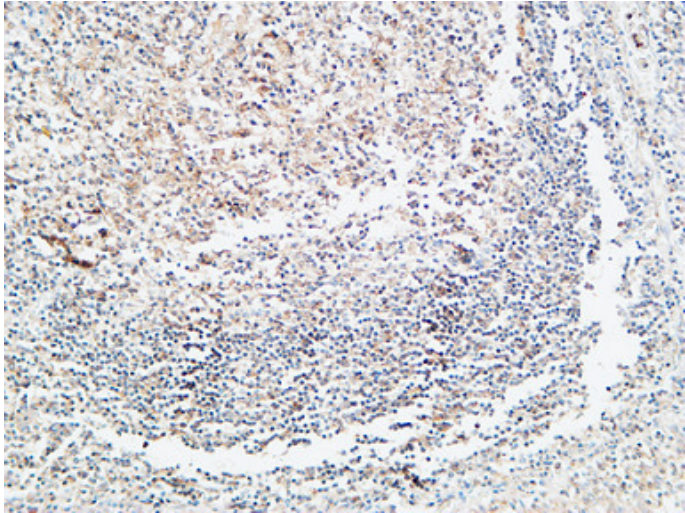


Immunohistochemical analysis of paraffin-embedded rat-liver, antibody was diluted at 1:100

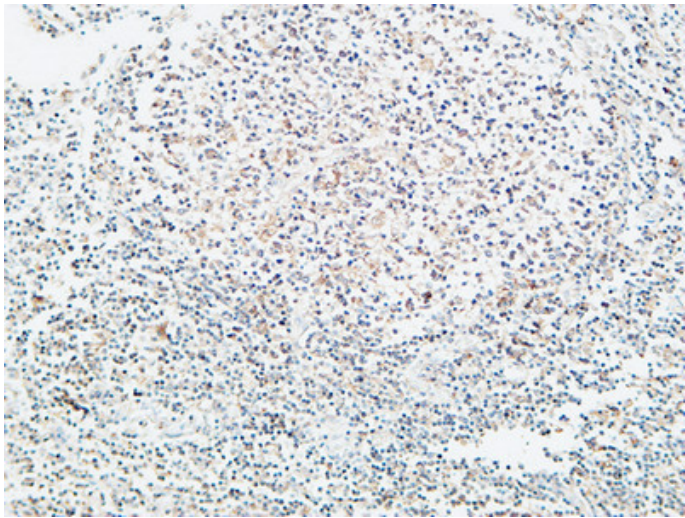


Immunohistochemical analysis of paraffin-embedded mouse-liver, antibody was diluted at 1:100

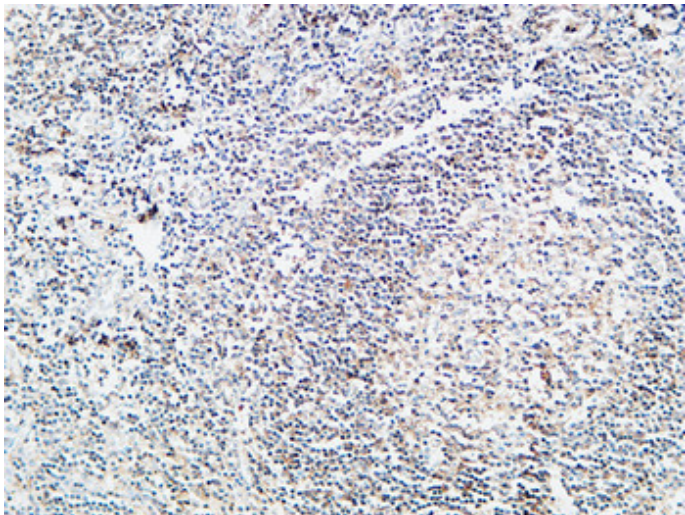
Immunohistochemical analysis of paraffin-embedded Human Amygdala. 1, Antibody was diluted at 1:200(4°,overnight). 2, High-pressure and temperature EDTA, pH8.0 was used for antigen retrieval. 3,Secondary antibody was diluted at 1:200(room temperature,



30min).

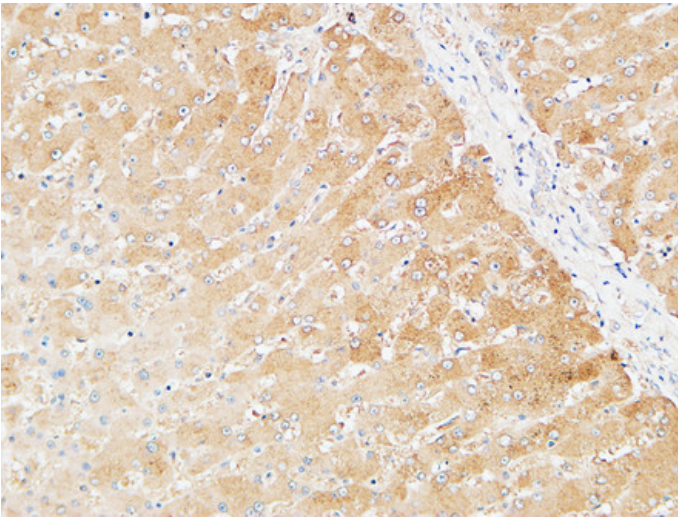
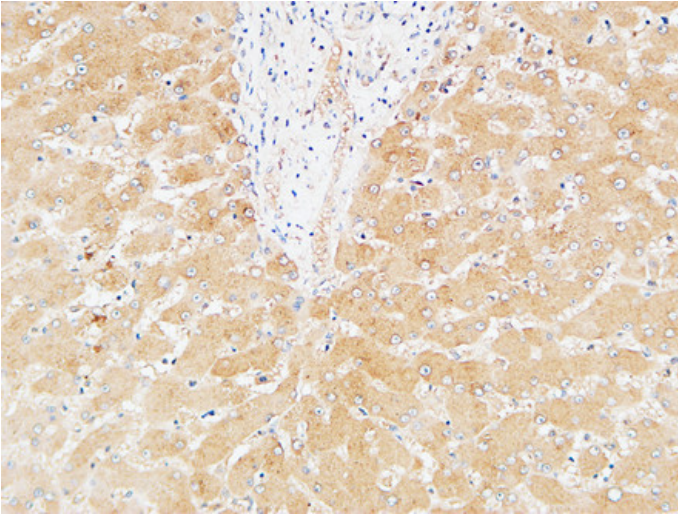


Immunohistochemical analysis of paraffin-embedded Human Amygdala. 1, Antibody was diluted at 1:200(4°,overnight). 2, High-pressure and temperature EDTA, pH8.0 was used for antigen retrieval. 3,Secondary antibody was diluted at 1:200(room temperature, 30min).

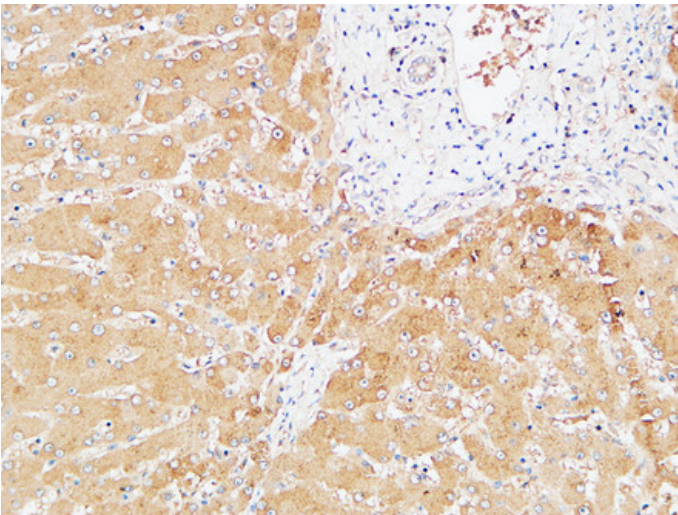


Immunohistochemical analysis of paraffin-embedded Human Amygdala. 1, Antibody was diluted at 1:200(4°,overnight). 2, High-pressure and temperature EDTA, pH8.0 was used for antigen retrieval. 3,Secondary antibody was diluted at 1:200(room temperature, 30min).

Immunohistochemical analysis of paraffin-embedded Human Liver. 1, Antibody was diluted at 1:200(4°,overnight). 2, High-pressure and temperature EDTA, pH8.0 was used for antigen retrieval. 3,Secondary antibody was diluted at 1:200(room temperature, 30min).



Immunohistochemical analysis of paraffin-embedded Human Liver. 1, Antibody was diluted at 1:200(4°, overnight). 2, High-pressure and temperature EDTA, pH8.0 was used for antigen retrieval. 3, Secondary antibody was diluted at 1:200(room temperature, 30min).



Immunohistochemical analysis of paraffin-embedded Human Liver. 1, Antibody was diluted at 1:200(4°, overnight). 2, High-pressure and temperature EDTA, pH8.0 was used for antigen retrieval. 3, Secondary antibody was diluted at 1:200(room temperature, 30min).