



## Hepassocin Polyclonal Antibody

Catalog_no :	<u>AT5127</u>
Applications :	<u>WB,IHC-p,ELISA</u>
Reactivity :	<u>Human,Mouse,Rat</u>
Category :	<u>抗原抗体</u>
Size :	<u>100µg/50µg/20µg</u>
Gene_name :	<u>FGL1</u>
Protein_name :	<u>Fibrinogen-like protein 1</u>
Humangene_id :	<u><a href="#">2267</a></u>
Humanswissprot_no :	<u><a href="#">Q08830</a></u>
Mousegene_id :	<u><a href="#">234199</a></u>
Mouseswissprot_no :	<u><a href="#">Q71KU9</a></u>
Ratswissprot_no :	<u><a href="#">Q5M8C6</a></u>
Immunogen :	<u>Synthesized peptide derived from the Internal region of human Hepassocin.</u>
Specificity :	<u>Hepassocin Polyclonal Antibody detects endogenous levels of Hepassocin protein.</u>
Formulation :	<u>Liquid in PBS containing 50% glycerol, 0.5% BSA and 0.02% sodium azide.</u>
Source :	<u>Rabbit</u>
Dilution :	<u>Western Blot: 1/500 - 1/2000. IHC-p: 1:100-300 ELISA: 1/20000. Not yet tested in other applications.</u>
Purification :	<u>The antibody was affinity-purified from rabbit antiserum by affinity-chromatography using epitope-specific immunogen.</u>
Concentration :	<u>1 mg/ml</u>
Storage_stability :	<u>-20°C/1 year</u>
Msds :	<u><a href="#">MSDS_Antibody.pdf</a></u>
Other_name :	<u>FGL1; HFREP1; Fibrinogen-like protein 1; HP-041; Hepassocin; Hepatocyte-derived fibrinogen-related protein 1; HFREP-1; Liver fibrinogen-related protein 1; LFIRE-1</u>



Molecular  
Weight :

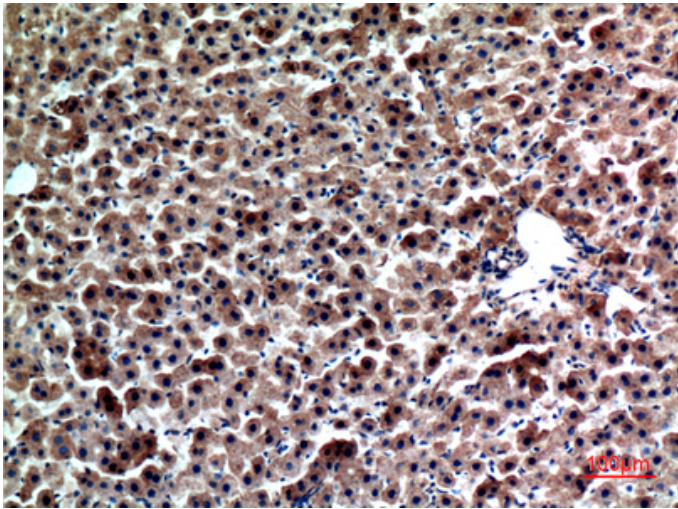
36KD

---

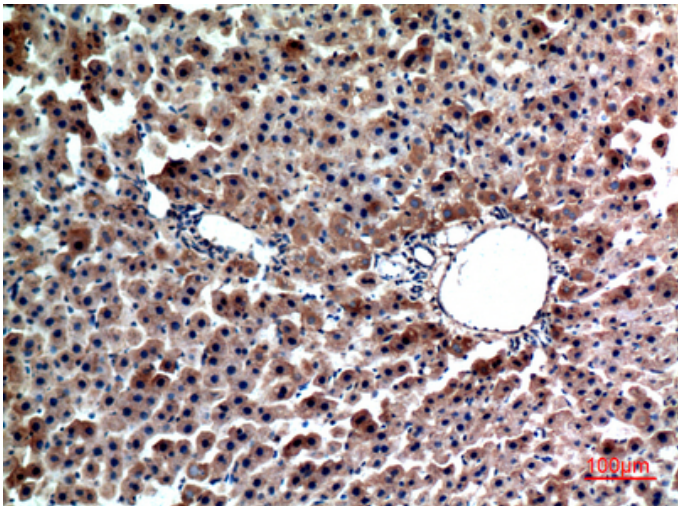
## Product Images



Western Blot analysis of mouse liver cells using Hepassocin Polyclonal Antibody.. Secondary antibody was diluted at 1:20000



Immunohistochemical analysis of paraffin-embedded rat-liver, antibody was diluted at 1:100



Immunohistochemical analysis of paraffin-embedded rat-liver, antibody was diluted at 1:100

Immunohistochemical analysis of paraffin-embedded mouse-liver, antibody was diluted at 1:100

