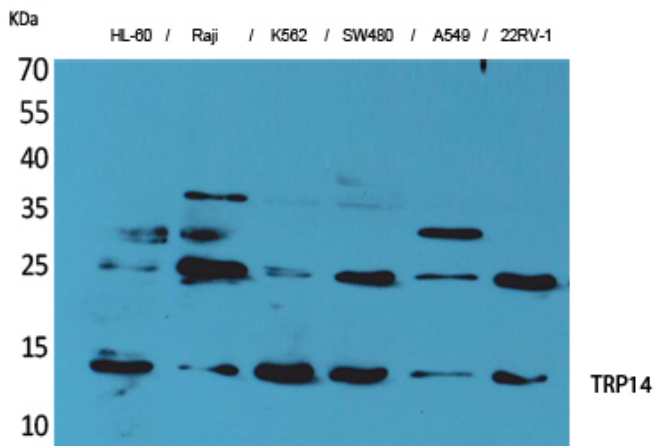


## TRP14 Polyclonal Antibody

Catalog_no :	<u>AT5131</u>
Applications :	<u>WB,ELISA</u>
Reactivity :	<u>Human</u>
Category :	<u>抗原抗体</u>
Size :	<u>100µg/50µg/20µg</u>
Gene_name :	<u>TXNDC17</u>
Protein_name :	<u>Thioredoxin domain-containing protein 17</u>
Humangene_id :	<u><a href="#">84817</a></u>
Humanswissprot_no :	<u><a href="#">Q9BRA2</a></u>
Mousegene_id :	<u><a href="#">52700</a></u>
Mouseswissprot_no :	<u><a href="#">Q9COM5</a></u>
Immunogen :	<u>Synthesized peptide derived from TRP14 . at AA range: 20-100</u>
Specificity :	<u>TRP14 Polyclonal Antibody detects endogenous levels of TRP14 protein.</u>
Formulation :	<u>Liquid in PBS containing 50% glycerol, 0.5% BSA and 0.02% sodium azide.</u>
Source :	<u>Rabbit</u>
Dilution :	<u>Western Blot: 1/500 - 1/2000. ELISA: 1/20000. Not yet tested in other applications.</u>
Purification :	<u>The antibody was affinity-purified from rabbit antiserum by affinity-chromatography using epitope-specific immunogen.</u>
Concentration :	<u>1 mg/ml</u>
Storage_stability :	<u>-20°C/1 year</u>
Msds :	<u>MSDS_Antibody.pdf</u>
Other_name :	<u>TXNDC17; TXNL5; Thioredoxin domain-containing protein 17; 14 kDa thioredoxin-related protein; TRP14; Protein 42-9-9; Thioredoxin-like protein 5</u>
Molecular Weight :	<u>13KD</u>

## Product Images



Western Blot analysis of HL-60, Raji, K562, SW480, A549, 22RV-1 cells using TRP14 Polyclonal Antibody..  
Secondary antibody was diluted at 1:20000