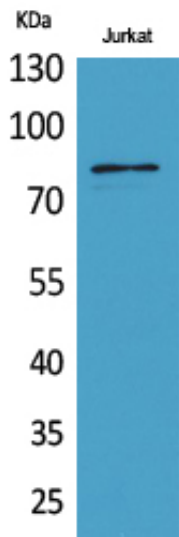




PREP Polyclonal Antibody

Catalog_no :	AT5132
Applications :	WB,IHC-p,ELISA
Reactivity :	Human,Mouse,Rat
Category :	抗原抗体
Size :	100µg/50µg/20µg
Gene_name :	PREP
Protein_name :	Prolyl endopeptidase
Humangene_id :	5550
Humanswissprot_no :	Q8N6D4
Immunogen :	Synthesized peptide derived from PREP . at AA range: 10-90
Specificity :	PREP Polyclonal Antibody detects endogenous levels of PREP protein.
Formulation :	Liquid in PBS containing 50% glycerol, 0.5% BSA and 0.02% sodium azide.
Source :	Rabbit
Dilution :	Western Blot: 1/500 - 1/2000. IHC-p: 1:100-300 ELISA: 1/20000. Not yet tested in other applications.
Purification :	The antibody was affinity-purified from rabbit antiserum by affinity-chromatography using epitope-specific immunogen.
Concentration :	1 mg/ml
Storage_stability :	-20°C/1 year
Msds :	MSDS_Antibody.pdf
Other_name :	PREP; PEP; Prolyl endopeptidase; PE; Post-proline cleaving enzyme
Molecular Weight :	80KD

Product Images



Western Blot analysis of Jurkat cells using PREP Polyclonal Antibody.. Secondary antibody was diluted at 1:20000

