

TREM-1 Polyclonal Antibody

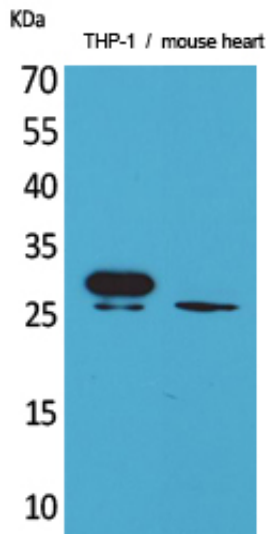
Catalog_no :	AT5133
Applications :	WB,IHC-p,ELISA
Reactivity :	Human
Category :	抗原抗体
Size :	100µg/50µg/20µg
Gene_name :	TREM1
Protein_name :	Triggering receptor expressed on myeloid cells 1
Humangene_id	54210
:	
Humanswissprot	Q9NP99
_no :	
Mousegene_id :	58217
Mouseswissprot	Q9JKE2
_no :	
Immunogen :	Synthesized peptide derived from TREM-1 . at AA range: 40-120
Specificity :	TREM-1 Polyclonal Antibody detects endogenous levels of TREM-1 protein.
Formulation :	Liquid in PBS containing 50% glycerol, 0.5% BSA and 0.02% sodium azide.
Source :	Rabbit
Dilution :	Western Blot: 1/500 - 1/2000. IHC-p: 1:100-300 ELISA: 1/20000. Not yet tested in other applications.
Purification :	The antibody was affinity-purified from rabbit antiserum by affinity-chromatography using epitope-specific immunogen.
Concentration :	1 mg/ml
Storage_stability	-20°C/1 year
:	
Msds :	MSDS_Antibody.pdf
Other_name :	TREM1; Triggering receptor expressed on myeloid cells 1; TREM-1; Triggering receptor expressed on monocytes 1; CD354
Molecular Weight :	26KD



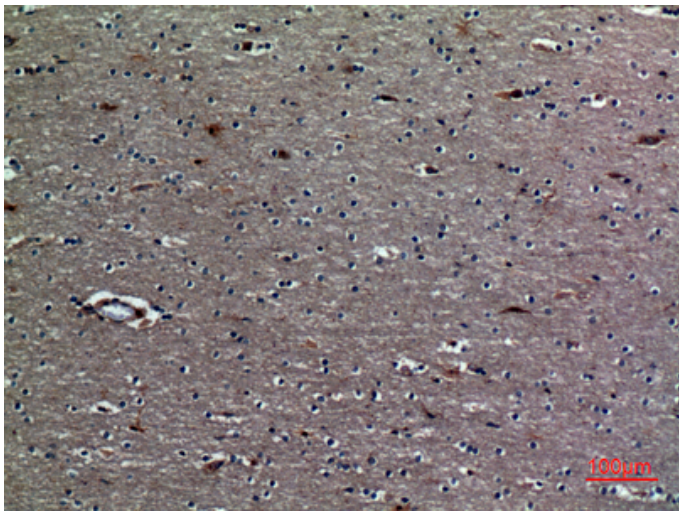
专注二抗产品

Biodragon旗下品牌

Product Images



Western Blot analysis of THP-1, mouse heart cells using TREM-1 Polyclonal Antibody.. Secondary antibody was diluted at 1:20000



Immunohistochemical analysis of paraffin-embedded human-brain, antibody was diluted at 1:100