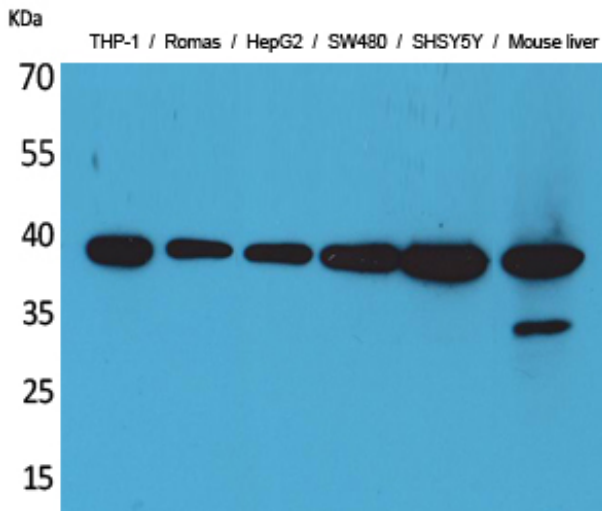


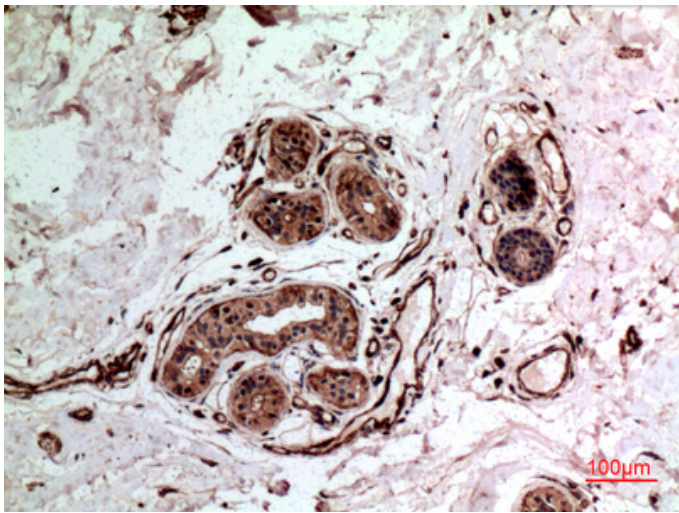
IL-10 Polyclonal Antibody

Catalog_no :	AT5138
Applications :	WB,IHC-p,ELISA
Reactivity :	Human
Category :	抗原抗体
Size :	100µg/50µg/20µg
Gene_name :	IL10
Protein_name :	Interleukin-10
Humangene_id :	3586
Humanswissprot_no :	P22301
Immunogen :	The antiserum was produced against synthesized peptide derived from the Internal region of human IL10. AA range:71-120
Specificity :	IL-10 Polyclonal Antibody detects endogenous levels of IL-10 protein.
Formulation :	Liquid in PBS containing 50% glycerol, 0.5% BSA and 0.02% sodium azide.
Source :	Rabbit
Dilution :	Western Blot: 1/500 - 1/2000. IHC-p: 1:100-300 ELISA: 1/20000. Not yet tested in other applications.
Purification :	The antibody was affinity-purified from rabbit antiserum by affinity-chromatography using epitope-specific immunogen.
Concentration :	1 mg/ml
Storage_stability :	-20°C/1 year
Msds :	MSDS_Antibody.pdf
Other_name :	IL10; Interleukin-10; IL-10; Cytokine synthesis inhibitory factor; CSIF
Molecular Weight :	20KD

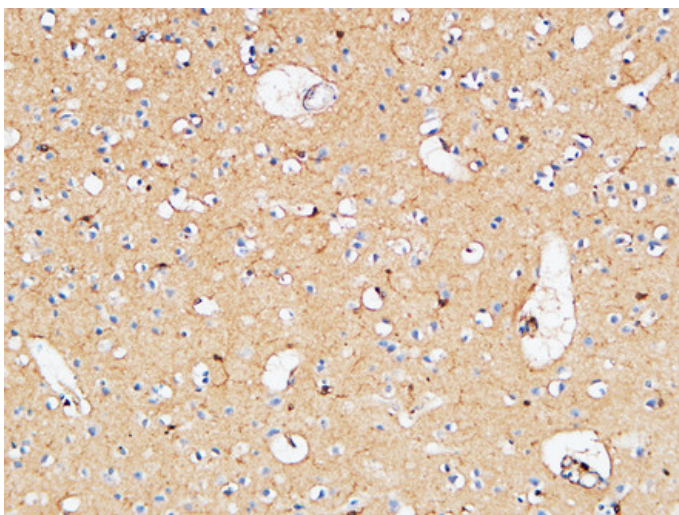
Product Images



Western Blot analysis of THP-1, Romas, HepG2, SW480, SHSY5Y, Mouse liver cells using IL-10 Polyclonal Antibody.. Secondary antibody was diluted at 1:20000

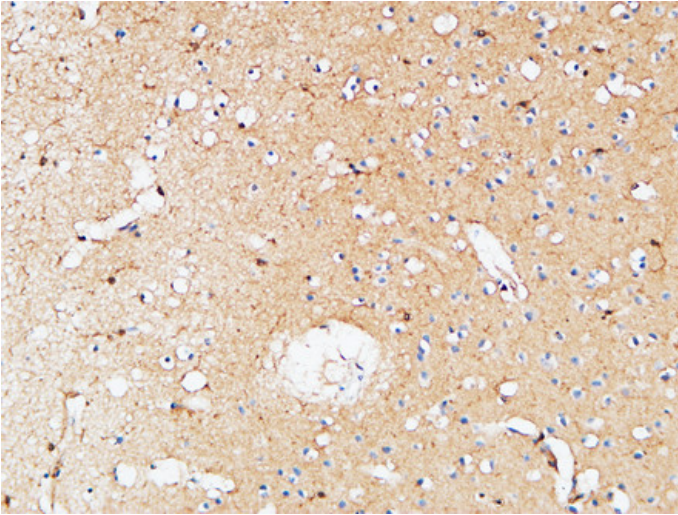


Immunohistochemical analysis of paraffin-embedded human-breast-cancer, antibody was diluted at 1:100

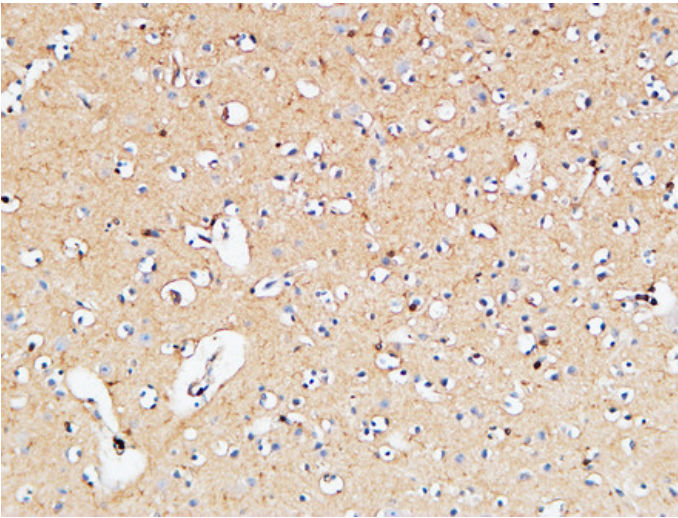


Immunohistochemical analysis of paraffin-embedded Human Cerebral cortex. 1, Antibody was diluted at 1:200(4°, overnight). 2, High-pressure and temperature EDTA, pH8.0 was used for antigen retrieval. 3, Secondary antibody was diluted at 1:200(room temperature, 30min).

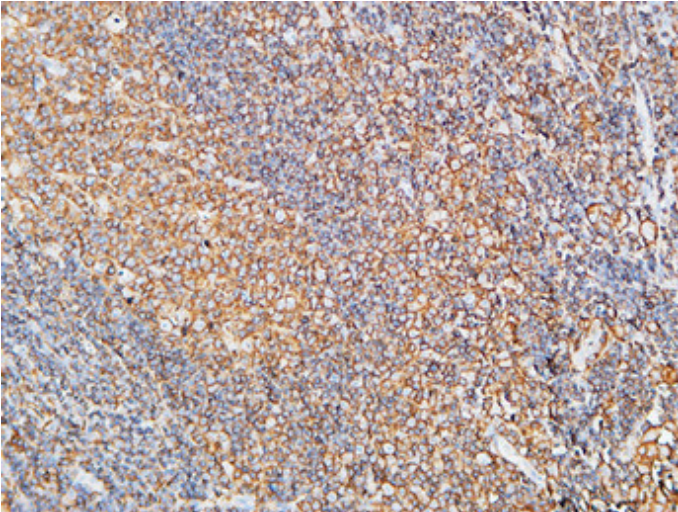
Immunohistochemical analysis of paraffin-embedded Human Cerebral cortex. 1, Antibody was diluted at 1:200(4°, overnight). 2, High-pressure and temperature EDTA, pH8.0 was used for antigen retrieval. 3, Secondary antibody was diluted at 1:200(room temperature, 30min).



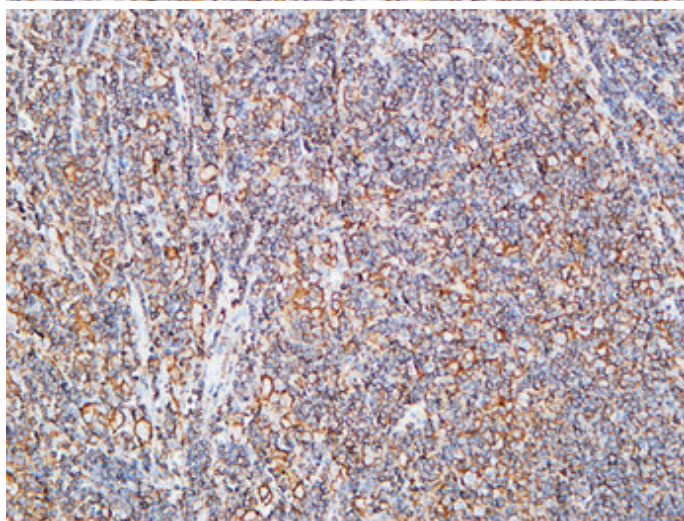
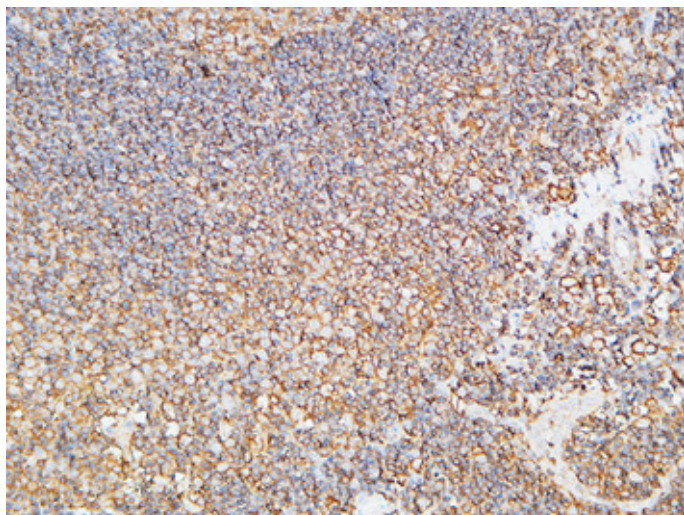
Immunohistochemical analysis of paraffin-embedded Human Cerebral cortex. 1, Antibody was diluted at 1:200(4°,overnight). 2, High-pressure and temperature EDTA, pH8.0 was used for antigen retrieval. 3,Secondary antibody was diluted at 1:200(room temperature, 30min).



Immunohistochemical analysis of paraffin-embedded Human lymphoma. 1, Antibody was diluted at 1:200(4°,overnight). 2, High-pressure and temperature EDTA, pH8.0 was used for antigen retrieval. 3,Secondary antibody was diluted at 1:200(room temperature, 30min).



Immunohistochemical analysis of paraffin-embedded Human lymphoma. 1, Antibody was diluted at 1:200(4°,overnight). 2, High-pressure and temperature EDTA, pH8.0 was used for antigen retrieval. 3,Secondary antibody was diluted at 1:200(room temperature, 30min).



Immunohistochemical analysis of paraffin-embedded Human lymphoma. 1, Antibody was diluted at 1:200(4°, overnight). 2, High-pressure and temperature EDTA, pH8.0 was used for antigen retrieval. 3, Secondary antibody was diluted at 1:200(room temperature, 30min).