

PKC γ Polyclonal Antibody

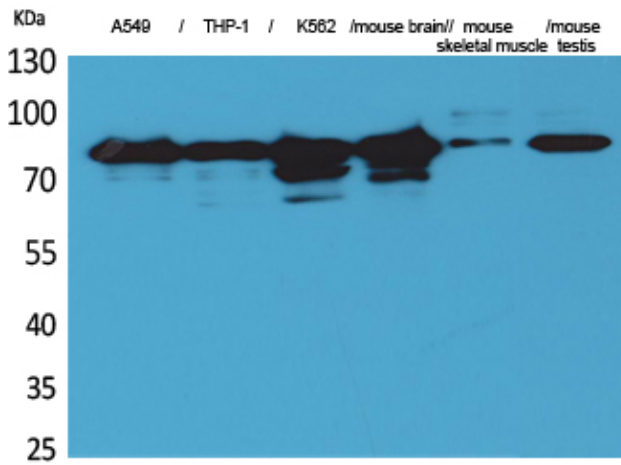
Catalog_no :	AT5148
Applications :	WB,IHC-p,ELISA
Reactivity :	Human,Mouse,Rat
Category :	抗原抗体
Size :	100 μ g/50 μ g/20 μ g
Gene_name :	PRKCG
Protein_name :	Protein kinase C gamma type
Humangene_id :	5582
Humanswissprot_no :	P05129
Mousegene_id :	18752
Mouseswissprot_no :	P63318
Ratgene_id :	24681
Ratswissprot_no :	P63319
Immunogen :	The antiserum was produced against synthesized peptide derived from the Internal region of human PRKCG. AA range:521-570
Specificity :	PKC γ Polyclonal Antibody detects endogenous levels of PKC γ protein.
Formulation :	Liquid in PBS containing 50% glycerol, 0.5% BSA and 0.02% sodium azide.
Source :	Rabbit
Dilution :	Western Blot: 1/500 - 1/2000. IHC-p: 1:100-300 ELISA: 1/20000. Not yet tested in other applications.
Purification :	The antibody was affinity-purified from rabbit antiserum by affinity-chromatography using epitope-specific immunogen.
Concentration :	1 mg/ml
Storage_stability :	-20°C/1 year
Msds :	MSDS_Antibody.pdf



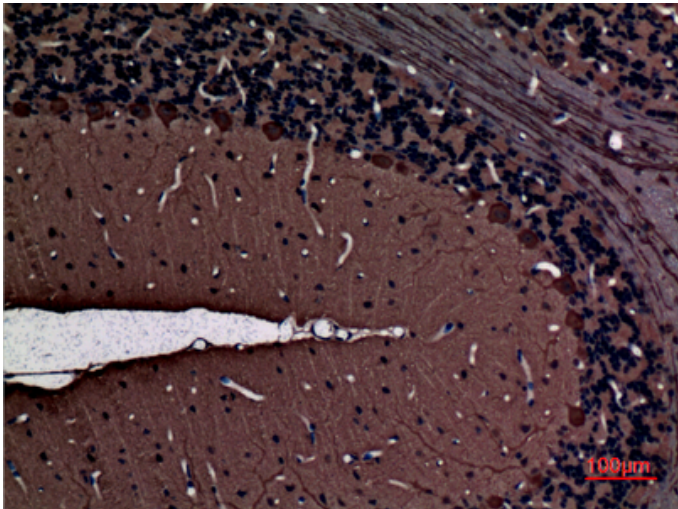
Other_name : PRKCG; PKCG; Protein kinase C gamma type; PKC-gamma

Molecular Weight : 78KD

Product Images



Western Blot analysis of A549, THP-1, K562, mouse brain, mouse skeletal muscle, mouse testis cells using PKC γ Polyclonal Antibody.. Secondary antibody was diluted at 1:20000



Immunohistochemical analysis of paraffin-embedded rat-brain, antibody was diluted at 1:100