

FAF1 Polyclonal Antibody

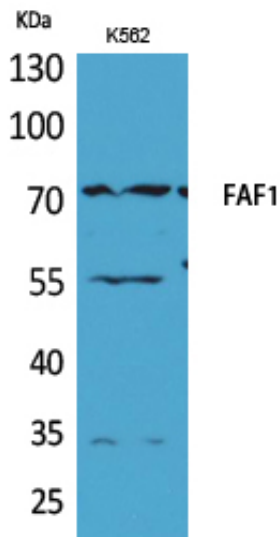
Catalog_no :	<u>AT5149</u>
Applications :	<u>WB,IHC-p,ELISA</u>
Reactivity :	<u>Human,Mouse,Rat</u>
Category :	<u>抗原抗体</u>
Size :	<u>100µg/50µg/20µg</u>
Gene_name :	<u>FAF1</u>
Protein_name :	<u>FAS-associated factor 1</u>
Humangene_id :	<u>11124</u>
Humanswissprot_no :	<u>Q9UNN5</u>
Mousegene_id :	<u>14084</u>
Mouseswissprot_no :	<u>P54731</u>
Ratgene_id :	<u>140657</u>
Ratswissprot_no :	<u>Q924K2</u>
Immunogen :	<u>The antiserum was produced against synthesized peptide derived from the Internal region of human FAF1. AA range:461-510</u>
Specificity :	<u>FAF1 Polyclonal Antibody detects endogenous levels of FAF1 protein.</u>
Formulation :	<u>Liquid in PBS containing 50% glycerol, 0.5% BSA and 0.02% sodium azide.</u>
Source :	<u>Rabbit</u>
Dilution :	<u>Western Blot: 1/500 - 1/2000. IHC-p: 1:100-300 ELISA: 1/20000. Not yet tested in other applications.</u>
Purification :	<u>The antibody was affinity-purified from rabbit antiserum by affinity-chromatography using epitope-specific immunogen.</u>
Concentration :	<u>1 mg/ml</u>
Storage_stability :	<u>-20°C/1 year</u>
Msds :	<u>MSDS_Antibody.pdf</u>



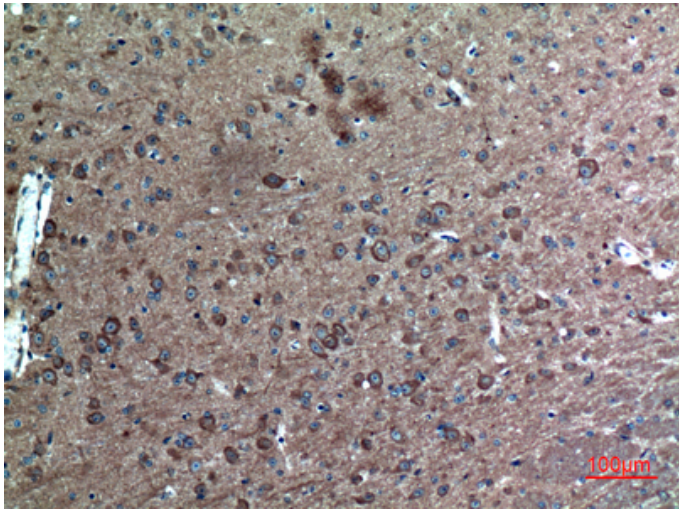
Other_name : FAF1; UBXD12; UBXN3A; CGI-03; FAS-associated factor 1; hFAF1; UBX domain-containing protein 12; UBX domain-containing protein 3A

Molecular Weight : 75KD

Product Images



Western Blot analysis of K562 cells using FAF1 Polyclonal Antibody.. Secondary antibody was diluted at 1:20000



Immunohistochemical analysis of paraffin-embedded mouse-brain, antibody was diluted at 1:100