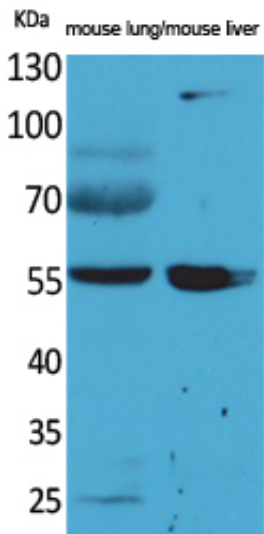


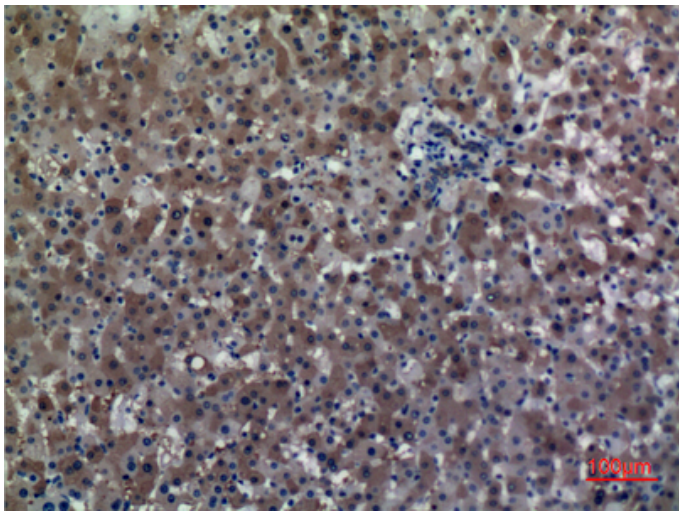
ALDH1A1 Polyclonal Antibody

Catalog_no :	AT5157
Applications :	WB,IHC-p,ELISA
Reactivity :	Human
Category :	抗原抗体
Size :	100µg/50µg/20µg
Gene_name :	ALDH1A1
Protein_name :	Retinal dehydrogenase 1
Humangene_id :	216
Humanswissprot_no :	P00352
Immunogen :	The antiserum was produced against synthesized peptide derived from the N-terminal region of human ALDH1A1. AA range:21-70
Specificity :	ALDH1A1 Polyclonal Antibody detects endogenous levels of ALDH1A1 protein.
Formulation :	Liquid in PBS containing 50% glycerol, 0.5% BSA and 0.02% sodium azide.
Source :	Rabbit
Dilution :	Western Blot: 1/500 - 1/2000. IHC-p: 1:100-300 ELISA: 1/20000. Not yet tested in other applications.
Purification :	The antibody was affinity-purified from rabbit antiserum by affinity-chromatography using epitope-specific immunogen.
Concentration :	1 mg/ml
Storage_stability :	-20°C/1 year
Msds :	MSDS_Antibody.pdf
Other_name :	ALDH1A1; ALDC; ALDH1; PUMB1; Retinal dehydrogenase 1; RALDH 1; RalDH1; ALDH-E1; ALHDII; Aldehyde dehydrogenase family 1 member A1; Aldehyde dehydrogenase, cytosolic
Molecular Weight :	55KD

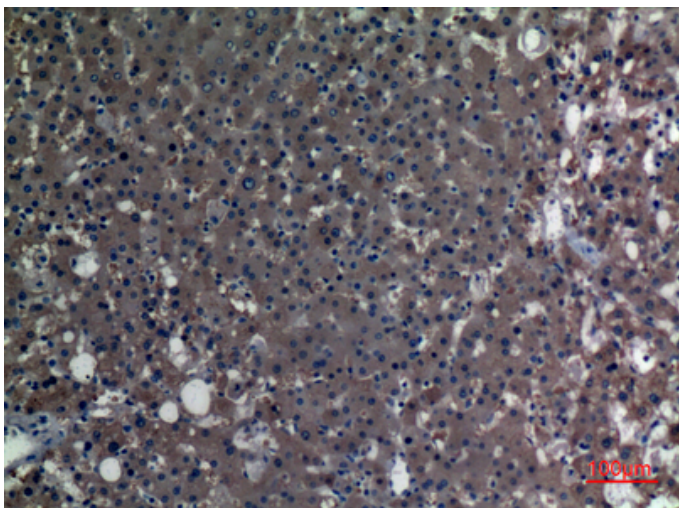
Product Images



Western Blot analysis of mouse lung, mouse liver cells using ALDH1A1 Polyclonal Antibody.. Secondary antibody was diluted at 1:20000



Immunohistochemical analysis of paraffin-embedded human-liver, antibody was diluted at 1:100



Immunohistochemical analysis of paraffin-embedded human-liver, antibody was diluted at 1:100