

BRMS-1 Polyclonal Antibody

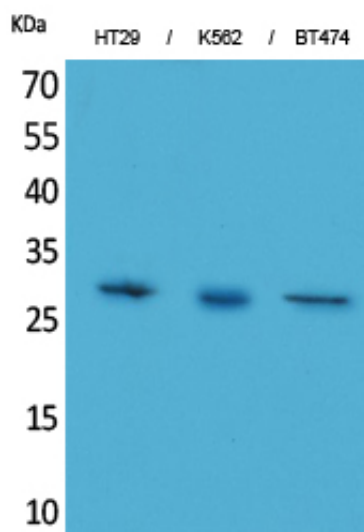
Catalog_no :	AT5158
Applications :	WB,ELISA
Reactivity :	Human,Mouse,Rat
Category :	抗原抗体
Size :	100µg/50µg/20µg
Gene_name :	BRMS1
Protein_name :	Breast cancer metastasis-suppressor 1
Humangene_id :	25855
Humanswissprot_no :	Q9HCU9
Mousegene_id :	107392
Mouseswissprot_no :	Q99N20
Ratgene_id :	100911841
Ratswissprot_no :	Q5M7T3
Immunogen :	The antiserum was produced against synthesized peptide derived from the C-terminal region of human BRMS1. AA range:197-246
Specificity :	BRMS-1 Polyclonal Antibody detects endogenous levels of BRMS-1 protein.
Formulation :	Liquid in PBS containing 50% glycerol, 0.5% BSA and 0.02% sodium azide.
Source :	Rabbit
Dilution :	Western Blot: 1/500 - 1/2000. ELISA: 1/20000. Not yet tested in other applications.
Purification :	The antibody was affinity-purified from rabbit antiserum by affinity-chromatography using epitope-specific immunogen.
Concentration :	1 mg/ml
Storage_stability :	-20°C/1 year
Msds :	MSDS_Antibody.pdf



Other_name : BRMS1; Breast cancer metastasis-suppressor 1

Molecular Weight : 28KD

Product Images



Western Blot analysis of HT29, K562, BT474 cells using BRMS-1 Polyclonal Antibody.. Secondary antibody was diluted at 1:20000