



FGF-12 Polyclonal Antibody

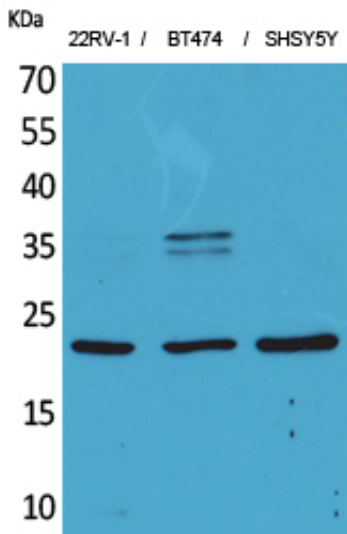
Catalog_no :	<u>AT5161</u>
Applications :	<u>WB,IHC-p,ELISA</u>
Reactivity :	<u>Human,Mouse,Rat</u>
Category :	<u>抗原抗体</u>
Size :	<u>100µg/50µg/20µg</u>
Gene_name :	<u>FGF12</u>
Protein_name :	<u>Fibroblast growth factor 12</u>
Humangene_id :	<u>2257</u>
Humanswissprot_no :	<u>P61328</u>
Mousegene_id :	<u>14167</u>
Mouseswissprot_no :	<u>P61329</u>
Ratgene_id :	<u>170630</u>
Ratswissprot_no :	<u>P61150</u>
Immunogen :	<u>The antiserum was produced against synthesized peptide derived from the Internal region of human FGF12. AA range:31-80</u>
Specificity :	<u>FGF-12 Polyclonal Antibody detects endogenous levels of FGF-12 protein.</u>
Formulation :	<u>Liquid in PBS containing 50% glycerol, 0.5% BSA and 0.02% sodium azide.</u>
Source :	<u>Rabbit</u>
Dilution :	<u>Western Blot: 1/500 - 1/2000. IHC-p: 1:100-300 ELISA: 1/20000. Not yet tested in other applications.</u>
Purification :	<u>The antibody was affinity-purified from rabbit antiserum by affinity-chromatography using epitope-specific immunogen.</u>
Concentration :	<u>1 mg/ml</u>
Storage_stability :	<u>-20°C/1 year</u>
Msds :	<u>MSDS_Antibody.pdf</u>



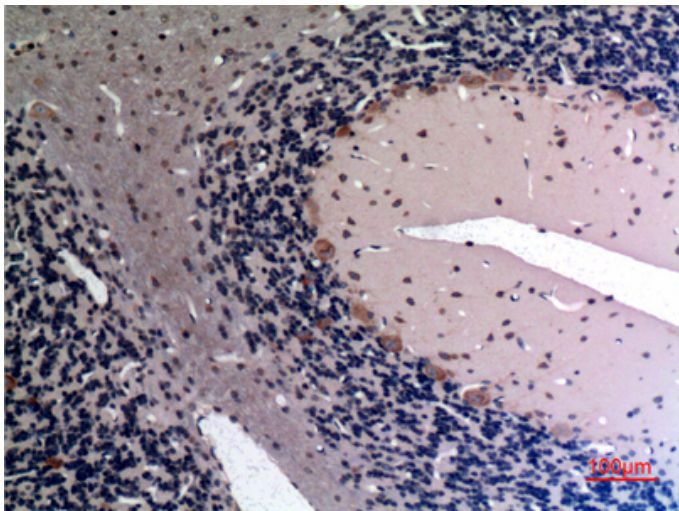
Other_name : FGF12; FGF12B; FHF1; Fibroblast growth factor 12; FGF-12; Fibroblast growth factor homologous factor 1; FHF-1; Myocyte-activating factor

Molecular Weight : 27KD

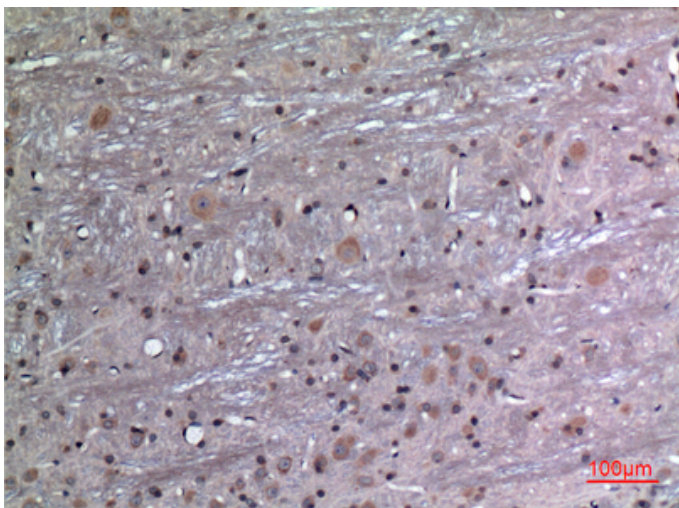
Product Images



Western Blot analysis of 22RV-1, BT474, SHSY5Y cells using FGF-12 Polyclonal Antibody.. Secondary antibody was diluted at 1:20000 cells nucleus extracted by Minute TM Cytoplasmic and Nuclear Fractionation kit (SC-003, Invent biotech, MN, USA).

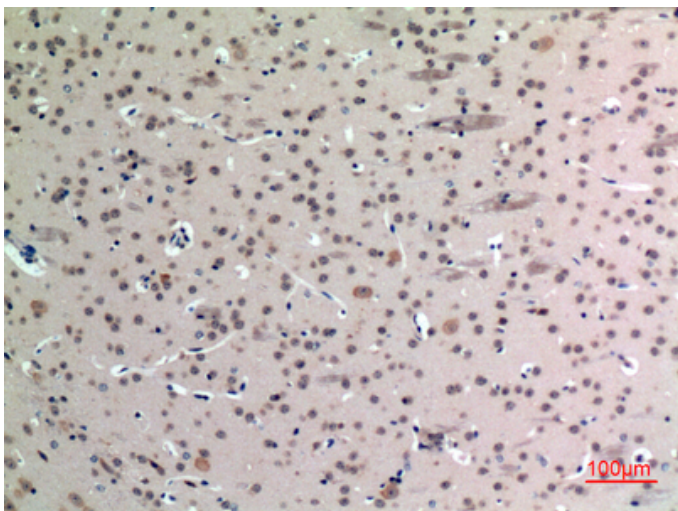
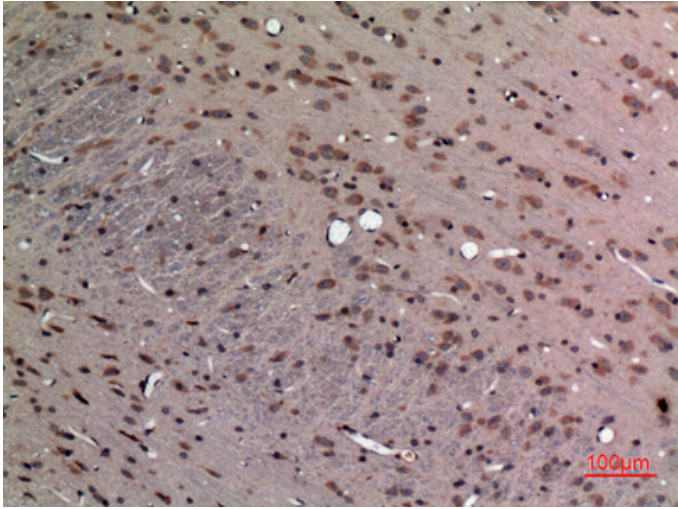


Immunohistochemical analysis of paraffin-embedded rat-brain, antibody was diluted at 1:100



Immunohistochemical analysis of paraffin-embedded rat-brain, antibody was diluted at 1:100

Immunohistochemical analysis of paraffin-embedded rat-brain, antibody was diluted at 1:100



Immunohistochemical analysis of paraffin-embedded mouse-brain, antibody was diluted at 1:100