

## Amylase Polyclonal Antibody

Catalog_no :	AT5164
Applications :	WB,IHC-p,ELISA
Reactivity :	Human,Mouse,Rat
Category :	抗原抗体
Size :	100µg/50µg/20µg
Gene_name :	AMY1A/AMY1B/AMY1C/AMY2A/AMY2B
Protein_name :	Alpha-amylase 1/Pancreatic alpha-amylase/Alpha-amylase 2B
Humangene_id	<a href="#">276</a>
:	
Humanswissprot	<a href="#">P04745</a>
_no :	
Mousegene_id :	<a href="#">11722</a>
Mouseswissprot	<a href="#">P00687</a>
_no :	
Ratgene_id :	<a href="#">497039</a>
Ratswissprot_no	<a href="#">P00689</a>
:	
Immunogen :	The antiserum was produced against synthesized peptide derived from the N-terminal region of human AMY1/2. AA range:61-110
Specificity :	Amylase Polyclonal Antibody detects endogenous levels of Amylase protein.
Formulation :	Liquid in PBS containing 50% glycerol, 0.5% BSA and 0.02% sodium azide.
Source :	Rabbit
Dilution :	Western Blot: 1/500 - 1/2000. IHC-p: 1:100-300 ELISA: 1/20000. Not yet tested in other applications.
Purification :	The antibody was affinity-purified from rabbit antiserum by affinity-chromatography using epitope-specific immunogen.
Concentration :	1 mg/ml
Storage_stability	-20°C/1 year
:	
Msds :	MSDS_Antibody.pdf



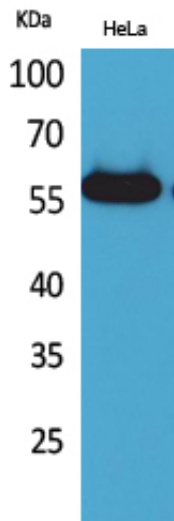
Other\_name : AMY1A; AMY1; AMY1B; AMY1; AMY1C; AMY1; Alpha-amylase 1; 1,4-alpha-D-glucan  
glucanohydrolase 1; Salivary alpha-amylase; AMY2A; Pancreatic alpha-amylase;  
PA; 1,4-alpha-D-glucan glucanohydrolase; AMY2B; Alpha-amylase 2B; 1,4-alpha-D-glucan  
glucanohydrolase 2B; Carcinoid alpha-amylase

---

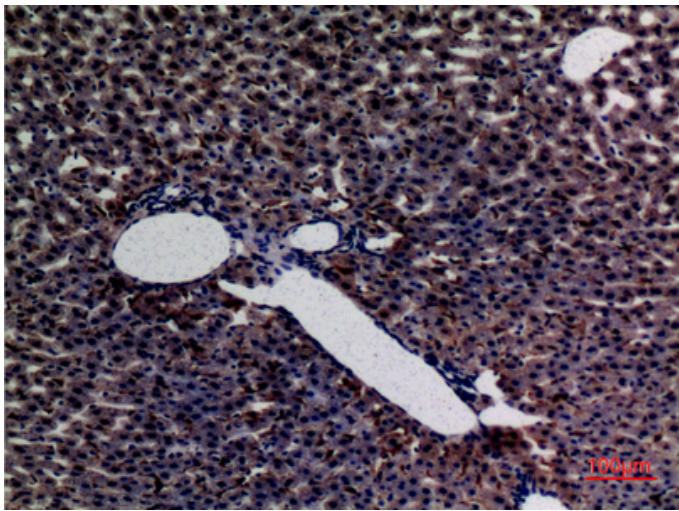
Molecular Weight : 60KD

---

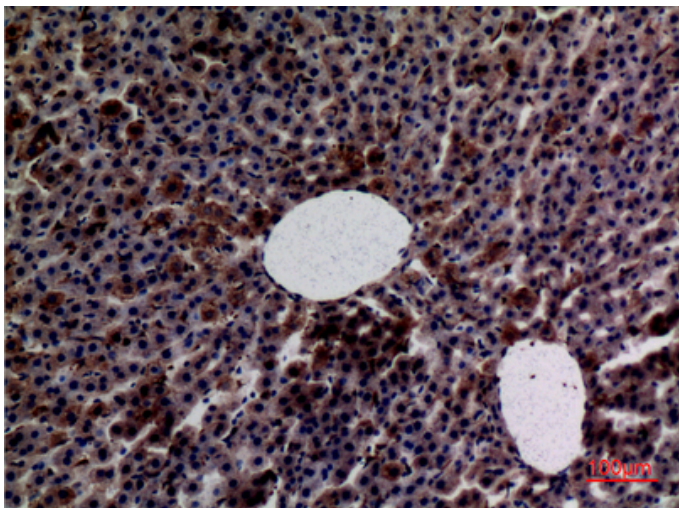
## Product Images



Western Blot analysis of HeLa cells using Amylase Polyclonal Antibody.. Secondary antibody was diluted at 1:20000



Immunohistochemical analysis of paraffin-embedded rat-liver, antibody was diluted at 1:100



Immunohistochemical analysis of paraffin-embedded rat-liver, antibody was diluted at 1:100

Immunohistochemical analysis of paraffin-embedded mouse-liver, antibody was diluted at 1:100

