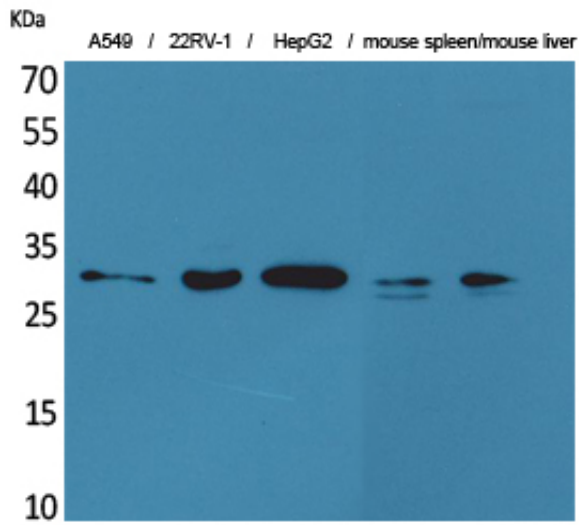




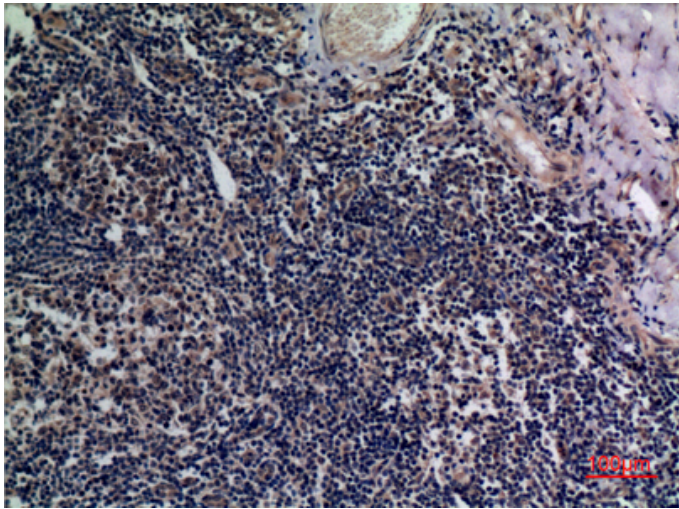
TALL-1 Polyclonal Antibody

Catalog_no :	AT5166
Applications :	WB,IHC-p,ELISA
Reactivity :	Human,Mouse
Category :	抗原抗体
Size :	100µg/50µg/20µg
Gene_name :	TNFSF13B
Protein_name :	Tumor necrosis factor ligand superfamily member 13B
Humangene_id :	10673
Humanswissprot_no :	Q9Y275
Immunogen :	The antiserum was produced against synthesized peptide derived from the Internal region of human TNFSF13B. AA range:151-200
Specificity :	TALL-1 Polyclonal Antibody detects endogenous levels of TALL-1 protein.
Formulation :	Liquid in PBS containing 50% glycerol, 0.5% BSA and 0.02% sodium azide.
Source :	Rabbit
Dilution :	Western Blot: 1/500 - 1/2000. IHC-p: 1:100-300 ELISA: 1/20000. Not yet tested in other applications.
Purification :	The antibody was affinity-purified from rabbit antiserum by affinity-chromatography using epitope-specific immunogen.
Concentration :	1 mg/ml
Storage_stability :	-20°C/1 year
Msds :	MSDS_Antibody.pdf
Other_name :	TNFSF13B; BAFF; BLYS; TALL1; TNFSF20; ZTNF4; Tumor necrosis factor ligand superfamily member 13B; B lymphocyte stimulator; BLYS; B-cell-activating factor; BAFF;Dendritic cell-derived TNF-like molecule; TNF- and APOL-related leukocyte expressed ligand 1; TALL-1; CD257
Molecular Weight :	32KD

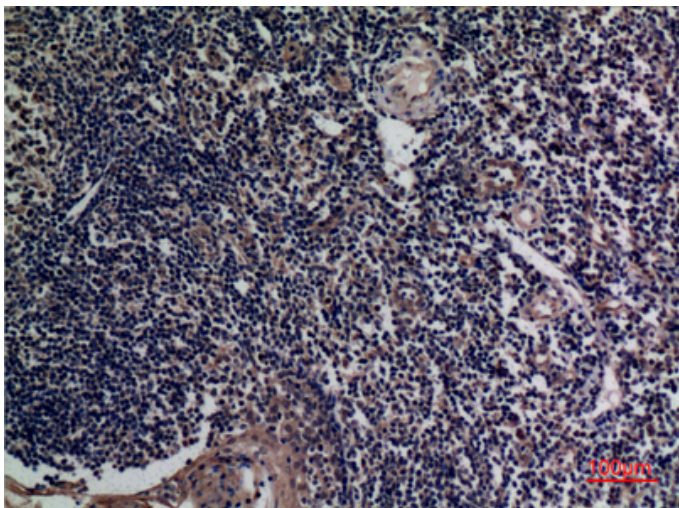
Product Images



Western Blot analysis of A549, 22RV-1, HepG2, mouse spleen, mouse liver cells using TALL-1 Polyclonal Antibody.. Secondary antibody was diluted at 1:20000



Immunohistochemical analysis of paraffin-embedded human-tonsils, antibody was diluted at 1:100



Immunohistochemical analysis of paraffin-embedded human-tonsils, antibody was diluted at 1:100