

## CPE Polyclonal Antibody

Catalog_no :	AT5167
Applications :	WB,IHC-p,ELISA
Reactivity :	Human,Mouse,Rat
Category :	抗原抗体
Size :	100µg/50µg/20µg
Gene_name :	CPE
Protein_name :	Carboxypeptidase E
Humangene_id :	<a href="#">1363</a>
Humanswissprot_no :	<a href="#">P16870</a>
Mousegene_id :	<a href="#">12876</a>
Mouseswissprot_no :	<a href="#">Q00493</a>
Ratgene_id :	<a href="#">25669</a>
Ratswissprot_no :	<a href="#">P15087</a>
Immunogen :	The antiserum was produced against synthesized peptide derived from the C-terminal region of human CPE. AA range:427-476
Specificity :	CPE Polyclonal Antibody detects endogenous levels of CPE protein.
Formulation :	Liquid in PBS containing 50% glycerol, 0.5% BSA and 0.02% sodium azide.
Source :	Rabbit
Dilution :	Western Blot: 1/500 - 1/2000. IHC-p: 1:100-300 ELISA: 1/20000. Not yet tested in other applications.
Purification :	The antibody was affinity-purified from rabbit antiserum by affinity-chromatography using epitope-specific immunogen.
Concentration :	1 mg/ml
Storage_stability :	-20°C/1 year
Msds :	MSDS_Antibody.pdf



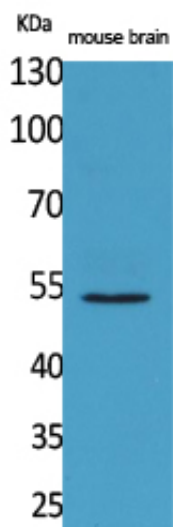
Other\_name : CPE; Carboxypeptidase E; CPE; Carboxypeptidase H; CPH; Enkephalin convertase;  
Prohormone-processing carboxypeptidase

---

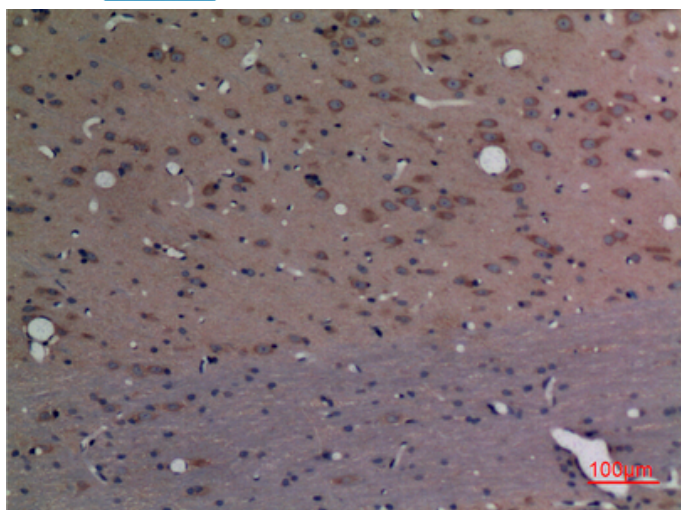
Molecular Weight : 53KD

---

## Product Images



Western Blot analysis of mouse brain cells using CPE Polyclonal Antibody.. Secondary antibody was diluted at 1:20000



Immunohistochemical analysis of paraffin-embedded rat-brain, antibody was diluted at 1:100