

Angptl4 Polyclonal Antibody

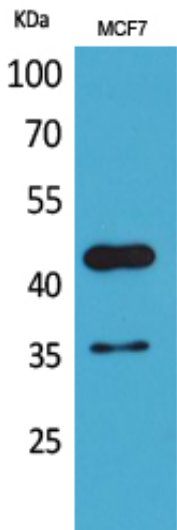
Catalog_no :	AT5174
Applications :	WB,IHC-p,ELISA
Reactivity :	Human,Mouse,Rat
Category :	抗原抗体
Size :	100µg/50µg/20µg
Gene_name :	ANGPTL4
Protein_name :	Angiopoietin-related protein 4
Humangene_id	51129
:	
Humanswissprot	Q9BY76
_no :	
Mousegene_id :	57875
Mouseswissprot	Q9Z1P8
_no :	
Ratgene_id :	362850
Ratswissprot_no	Q6TMA8
:	
Immunogen :	The antiserum was produced against synthesized peptide derived from the Internal region of human ANGPTL4. AA range:301-350
Specificity :	Angptl4 Polyclonal Antibody detects endogenous levels of Angptl4 protein.
Formulation :	Liquid in PBS containing 50% glycerol, 0.5% BSA and 0.02% sodium azide.
Source :	Rabbit
Dilution :	IHC-p: 100-300.Western Blot: 1/500 - 1/2000. ELISA: 1/20000. Not yet tested in other applications.
Purification :	The antibody was affinity-purified from rabbit antiserum by affinity-chromatography using epitope-specific immunogen.
Concentration :	1 mg/ml
Storage_stability	-20°C/1 year
:	
Msds :	MSDS_Antibody.pdf



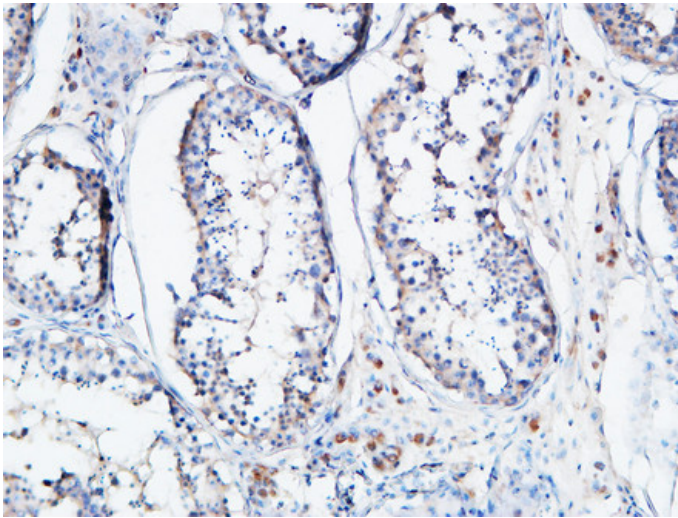
Other_name : ANGPTL4; ARP4; HFARP; PGAR; PP1158; PSEC0166; Angiopoietin-related protein 4;
Angiopoietin-like protein 4; Hepatic fibrinogen/angiopoietin-related protein; HFARP

Molecular Weight : 45KD

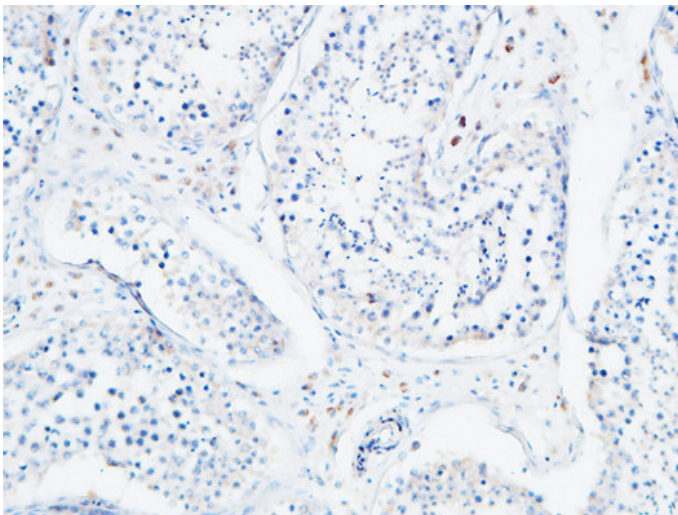
Product Images



Western Blot analysis of MCF7 cells using Angptl4 Polyclonal Antibody.. Secondary antibody was diluted at 1:20000

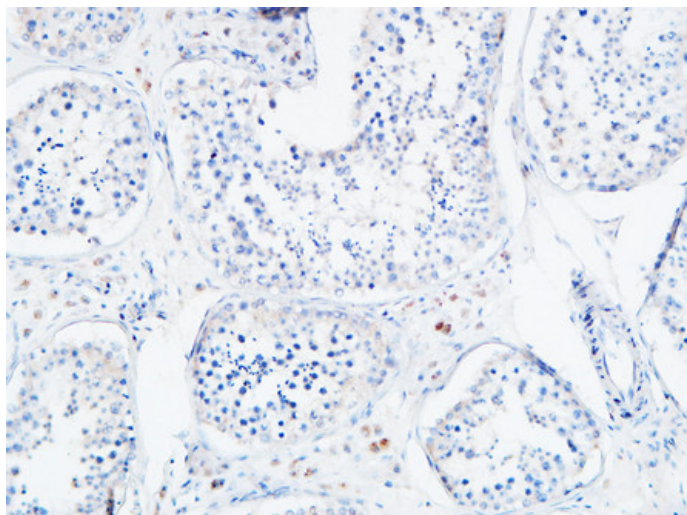


Immunohistochemical analysis of paraffin-embedded Human testis. 1, Antibody was diluted at 1:100(4°,overnight). 2, High-pressure and temperature EDTA, pH8.0 was used for antigen retrieval. 3,Secondary antibody was diluted at 1:200(room temperature, 30min).



Immunohistochemical analysis of paraffin-embedded Human testis. 1, Antibody was diluted at 1:100(4°,overnight). 2, High-pressure and temperature EDTA, pH8.0 was used for antigen retrieval. 3,Secondary antibody was diluted at 1:200(room temperature, 30min).

Immunohistochemical analysis of paraffin-embedded Human testis. 1, Antibody was diluted at 1:100(4°,overnight). 2, High-pressure and temperature EDTA, pH8.0 was used for antigen retrieval. 3,Secondary antibody was diluted at 1:200(room temperature,



30min).