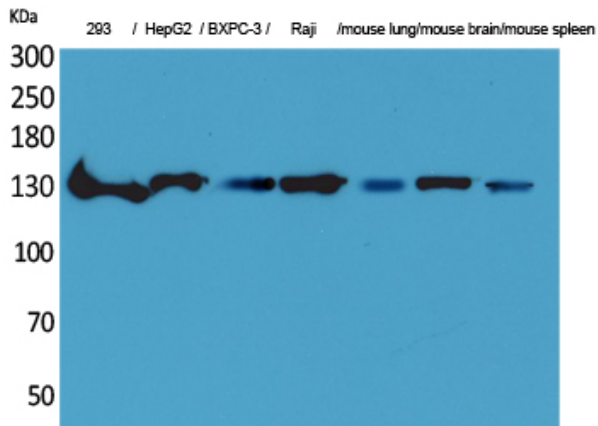




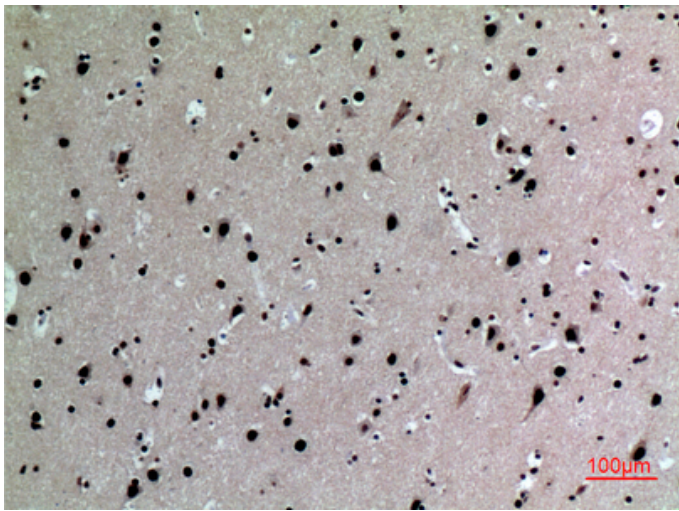
IL-16 Polyclonal Antibody

Catalog_no :	AT5175
Applications :	WB,IHC-p,ELISA
Reactivity :	Human
Category :	抗原抗体
Size :	100µg/50µg/20µg
Gene_name :	IL16
Protein_name :	Pro-interleukin-16
Humangene_id :	3603
Humanswissprot_no :	Q14005
Immunogen :	The antiserum was produced against synthesized peptide derived from the C-terminal region of human IL16. AA range:1281-1330
Specificity :	IL-16 Polyclonal Antibody detects endogenous levels of IL-16 protein.
Formulation :	Liquid in PBS containing 50% glycerol, 0.5% BSA and 0.02% sodium azide.
Source :	Rabbit
Dilution :	Western Blot: 1/500 - 1/2000. IHC-p: 1:100-300 ELISA: 1/20000. Not yet tested in other applications.
Purification :	The antibody was affinity-purified from rabbit antiserum by affinity-chromatography using epitope-specific immunogen.
Concentration :	1 mg/ml
Storage_stability :	-20°C/1 year
Msds :	MSDS_Antibody.pdf
Other_name :	IL16; Pro-interleukin-16
Molecular Weight :	140KD

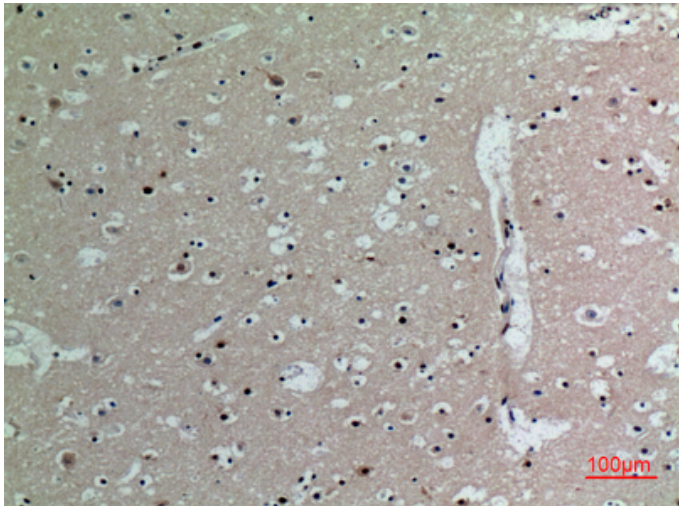
Product Images



Western Blot analysis of 293, HepG2, BXP-3, Raji, mouse lung, mouse brain, mouse spleen cells using IL-16 Polyclonal Antibody.. Secondary antibody was diluted at 1:20000



Immunohistochemical analysis of paraffin-embedded human-brain, antibody was diluted at 1:100



Immunohistochemical analysis of paraffin-embedded human-brain, antibody was diluted at 1:100