

## cPLA2 Polyclonal Antibody

Catalog_no :	<u>AT5176</u>
Applications :	<u>WB,IHC-p,ELISA</u>
Reactivity :	<u>Human,Mouse,Rat</u>
Category :	<u>抗原抗体</u>
Size :	<u>100µg/50µg/20µg</u>
Gene_name :	<u>PLA2G4A</u>
Protein_name :	<u>Cytosolic phospholipase A2</u>
Humangene_id	<u><a href="#">5321</a></u>
:	<u></u>
Humanswissprot	<u><a href="#">P47712</a></u>
_no :	<u></u>
Mousegene_id :	<u><a href="#">18783</a></u>
Mouseswissprot	<u><a href="#">P47713</a></u>
_no :	<u></u>
Ratswissprot_no	<u><a href="#">P50393</a></u>
:	<u></u>
Immunogen :	<u>The antiserum was produced against synthesized peptide derived from the N-terminal region of human PLA2G4A. AA range:31-80</u>
Specificity :	<u>cPLA2 Polyclonal Antibody detects endogenous levels of cPLA2 protein.</u>
Formulation :	<u>Liquid in PBS containing 50% glycerol, 0.5% BSA and 0.02% sodium azide.</u>
Source :	<u>Rabbit</u>
Dilution :	<u>Western Blot: 1/500 - 1/2000. IHC-p: 1:100-300 ELISA: 1/20000. Not yet tested in other applications.</u>
Purification :	<u>The antibody was affinity-purified from rabbit antiserum by affinity-chromatography using epitope-specific immunogen.</u>
Concentration :	<u>1 mg/ml</u>
Storage_stability	<u>-20°C/1 year</u>
:	<u></u>
Msds :	<u>MSDS_Antibody.pdf</u>
Other_name :	<u>PLA2G4A; CPLA2; PLA2G4; Cytosolic phospholipase A2; cPLA2; Phospholipase A2 group</u>



IVA

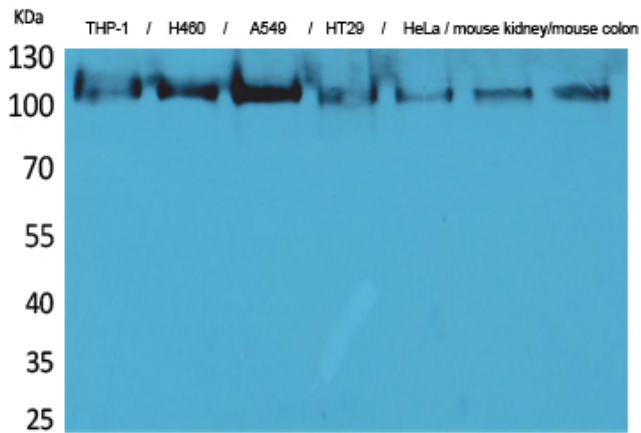
---

Molecular  
Weight :

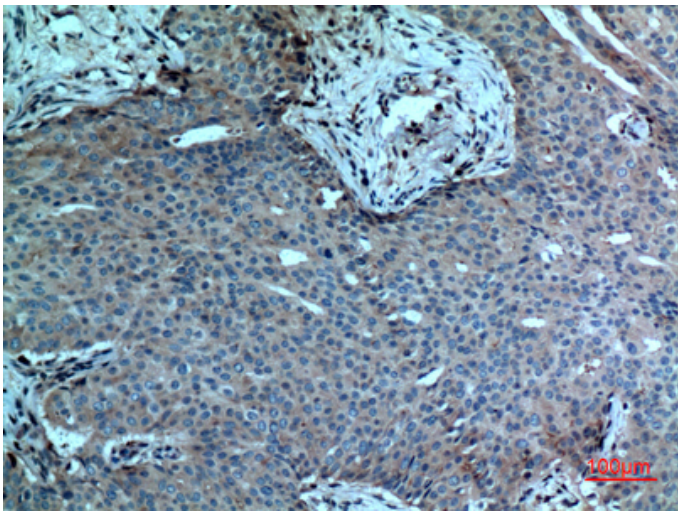
114KD

---

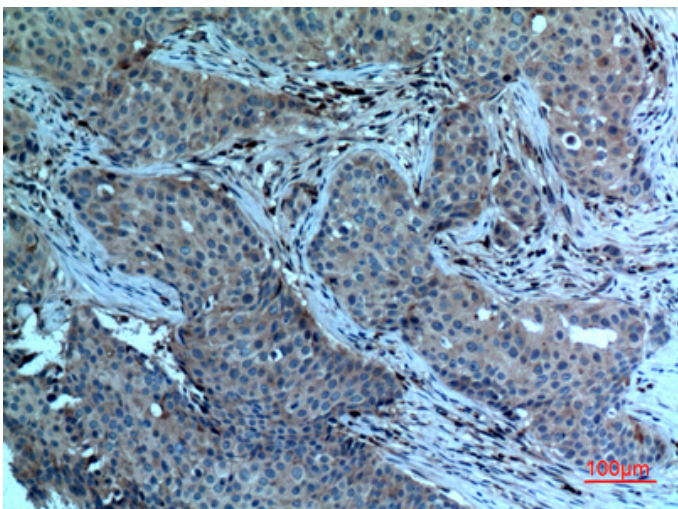
## Product Images



Western Blot analysis of THP-1, H460, A549, HT29, HeLa, mouse kidney, mouse colon cells using cPLA2 Polyclonal Antibody.. Secondary antibody was diluted at 1:20000

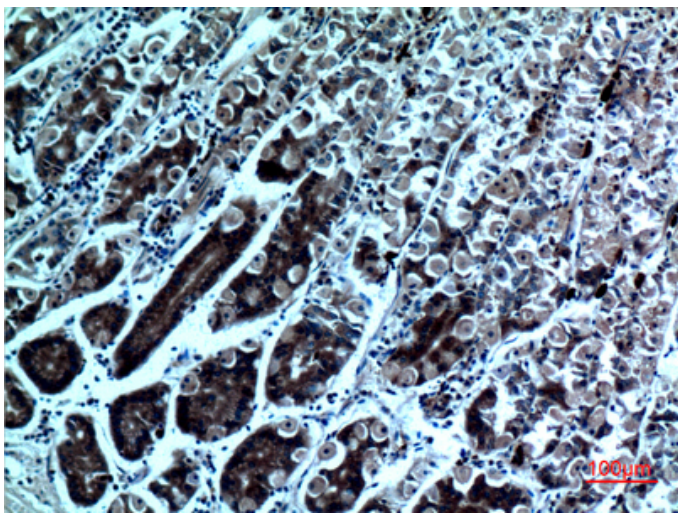
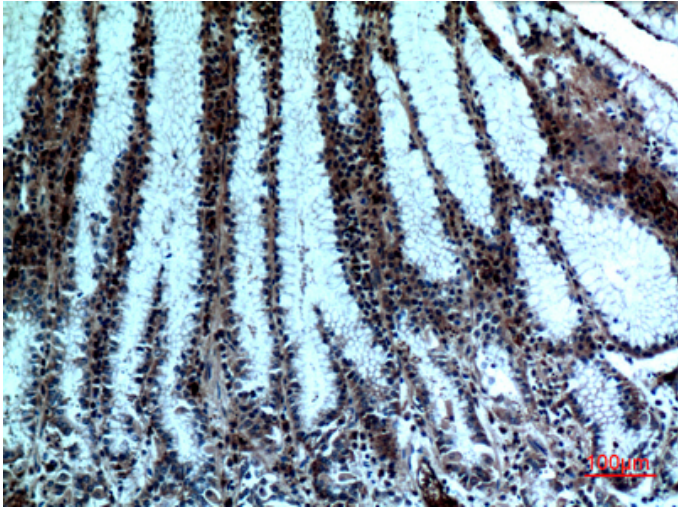


Immunohistochemical analysis of paraffin-embedded human breast cancer, antibody was diluted at 1:100



Immunohistochemical analysis of paraffin-embedded human breast cancer, antibody was diluted at 1:100

Immunohistochemical analysis of paraffin-embedded human stomach, antibody was diluted at 1:100



Immunohistochemical analysis of paraffin-embedded human-stomach, antibody was diluted at 1:100