

Lamin B1 Polyclonal Antibody

Catalog_no :	<u>AT5180</u>
Applications :	<u>WB,IHC-p,ELISA</u>
Reactivity :	<u>Human,Mouse,Rat</u>
Category :	<u>抗原抗体</u>
Size :	<u>100µg/50µg/20µg</u>
Gene_name :	<u>LMNB1</u>
Protein_name :	<u>Lamin-B1</u>
Humangene_id	<u>4001</u>
:	<u></u>
Humanswissprot	<u>P20700</u>
_no :	<u></u>
Mousegene_id :	<u>16906</u>
Mouseswissprot	<u>P14733</u>
_no :	<u></u>
Ratgene_id :	<u>116685</u>
Ratswissprot_no	<u>P70615</u>
:	<u></u>
Immunogen :	<u>The antiserum was produced against synthesized peptide derived from the Internal region of human LMNB1. AA range:391-440</u>
Specificity :	<u>Lamin B1 Polyclonal Antibody detects endogenous levels of Lamin B1 protein.</u>
Formulation :	<u>Liquid in PBS containing 50% glycerol, 0.5% BSA and 0.02% sodium azide.</u>
Source :	<u>Rabbit</u>
Dilution :	<u>Western Blot: 1/500 - 1/2000. IHC-p: 1:100-300 ELISA: 1/20000. Not yet tested in other applications.</u>
Purification :	<u>The antibody was affinity-purified from rabbit antiserum by affinity-chromatography using epitope-specific immunogen.</u>
Concentration :	<u>1 mg/ml</u>
Storage_stability	<u>-20°C/1 year</u>
:	<u></u>
Msds :	<u>MSDS_Antibody.pdf</u>

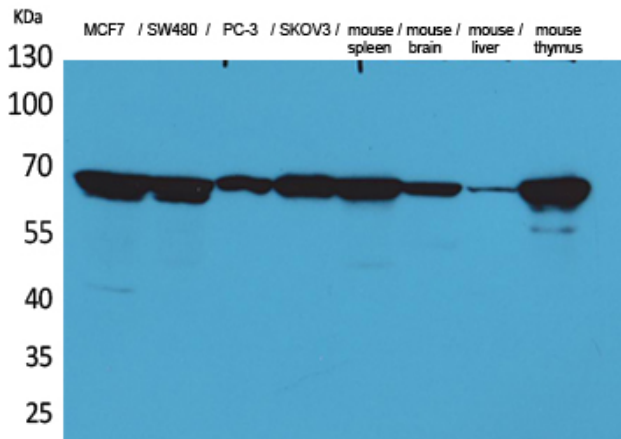


Other_name : LMNB1; LMN2; LMNB; Lamin-B1

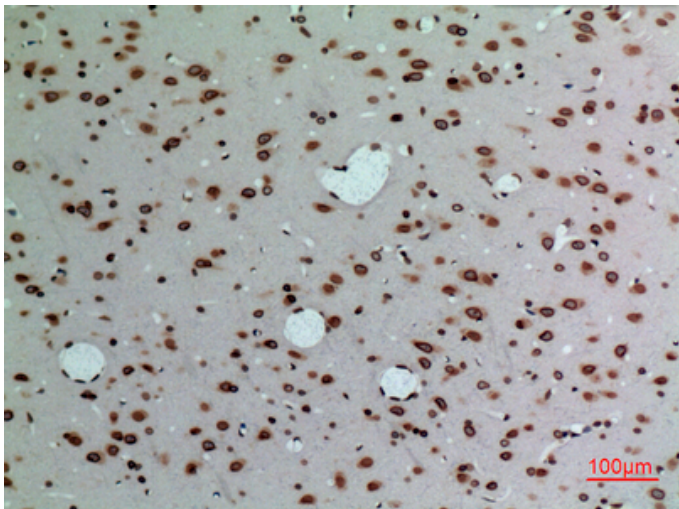
Molecular Weight : 70KD

Weight :

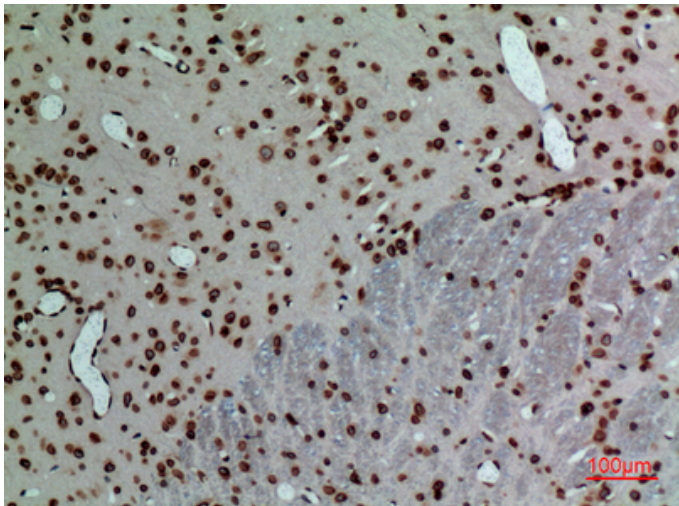
Product Images



Western Blot analysis of MCF7, SW480, PC-3, SKOV3, mouse spleen, mouse brain, mouse liver, mouse thymus cells using Lamin B1 Polyclonal Antibody. Antibody was diluted at 1:500. Secondary antibody was diluted at 1:20000 cells nucleus extracted by Minute TM Cytoplasmic and Nuclear Fractionation kit (SC-003, Invent biotech, MN, USA).

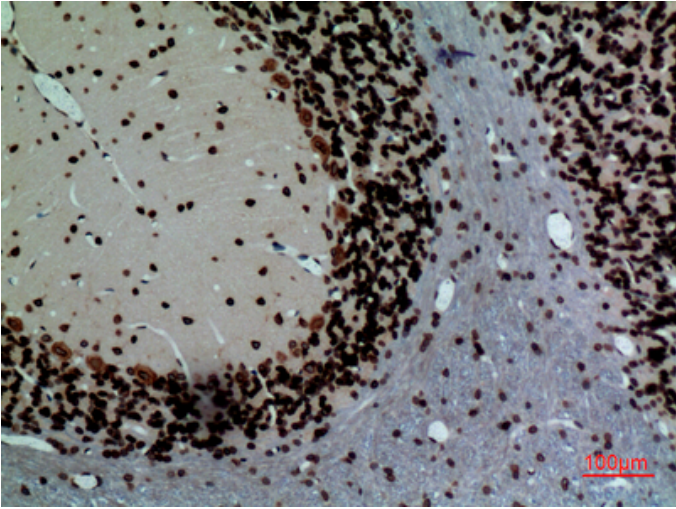


Immunohistochemical analysis of paraffin-embedded rat-brain, antibody was diluted at 1:100

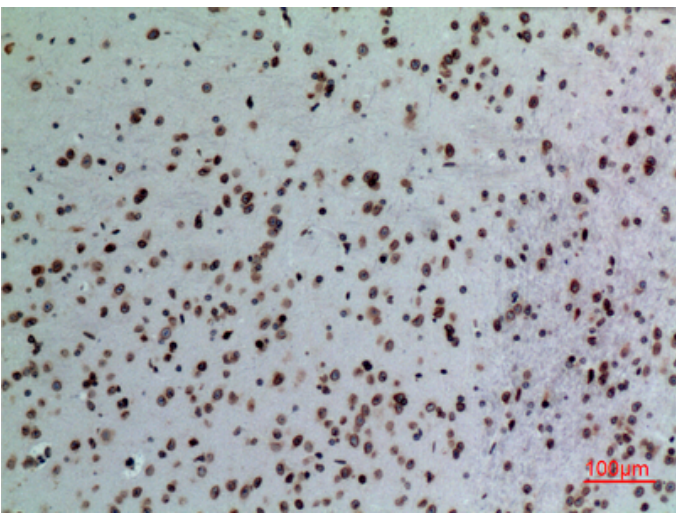


Immunohistochemical analysis of paraffin-embedded rat-brain, antibody was diluted at 1:100

Immunohistochemical analysis of paraffin-embedded rat-brain, antibody was diluted at 1:100



Immunohistochemical analysis of paraffin-embedded mouse-brain, antibody was diluted at 1:100



Immunohistochemical analysis of paraffin-embedded mouse-brain, antibody was diluted at 1:100

