

ALK-1 Polyclonal Antibody

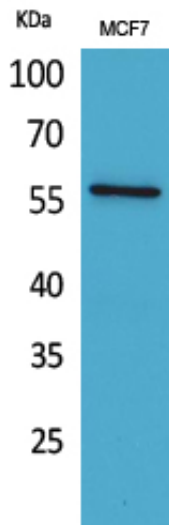
| | |
|-------------------|--|
| Catalog_no : | <u>AT5182</u> |
| Applications : | <u>WB,IHC-p,ELISA</u> |
| Reactivity : | <u>Human,Mouse,Rat</u> |
| Category : | <u>抗原抗体</u> |
| Size : | <u>100µg/50µg/20µg</u> |
| Gene_name : | <u>ACVRL1</u> |
| Protein_name : | <u>Serine/threonine-protein kinase receptor R3</u> |
| Humangene_id | <u>94</u> |
| : | <u></u> |
| Humanswissprot | <u>P37023</u> |
| _no : | <u></u> |
| Mousegene_id : | <u>11482</u> |
| Mouseswissprot | <u>Q61288</u> |
| _no : | <u></u> |
| Ratgene_id : | <u>25237</u> |
| Ratswissprot_no | <u>P80203</u> |
| : | <u></u> |
| Immunogen : | <u>The antiserum was produced against synthesized peptide derived from the N-terminal region of human ACVRL1. AA range:21-70</u> |
| Specificity : | <u>ALK-1 Polyclonal Antibody detects endogenous levels of ALK-1 protein.</u> |
| Formulation : | <u>Liquid in PBS containing 50% glycerol, 0.5% BSA and 0.02% sodium azide.</u> |
| Source : | <u>Rabbit</u> |
| Dilution : | <u>Western Blot: 1/500 - 1/2000. IHC-p: 1:100-300 ELISA: 1/20000. Not yet tested in other applications.</u> |
| Purification : | <u>The antibody was affinity-purified from rabbit antiserum by affinity-chromatography using epitope-specific immunogen.</u> |
| Concentration : | <u>1 mg/ml</u> |
| Storage_stability | <u>-20°C/1 year</u> |
| : | <u></u> |
| Msds : | <u>MSDS_Antibody.pdf</u> |



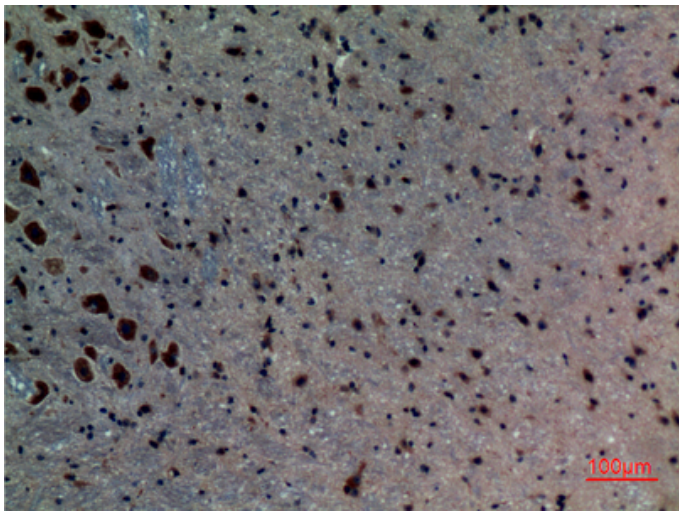
Other_name : ACVRL1; ACVRLK1; ALK1; Serine/threonine-protein kinase receptor R3; SKR3; Activin receptor-like kinase 1; ALK-1; TGF-B superfamily receptor type I; TSR-I

Molecular Weight : 56KD

Product Images



Western Blot analysis of MCF7 cells using ALK-1 Polyclonal Antibody.. Secondary antibody was diluted at 1:20000



Immunohistochemical analysis of paraffin-embedded mouse-brain, antibody was diluted at 1:100