

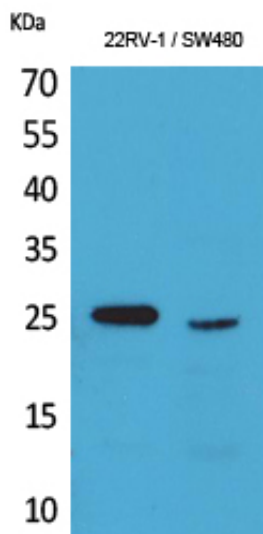
SSX Polyclonal Antibody

Catalog_no :	AT5185
Applications :	WB,IHC-p,ELISA
Reactivity :	Human
Category :	抗原抗体
Size :	100µg/50µg/20µg
Gene_name :	SSX1/SSX2/SSX3/SSX4/SSX5/SSX6/SSX7/SSX8/SSX9
Protein_name :	Protein SSX1/Protein SSX2/Protein SSX3/Protein SSX4/Protein SSX5/Protein SSX6/Protein SSX7/Protein SSX8/Protein SSX9
Humangene_id :	6756
Humanswissprot_no :	Q16384
Immunogen :	The antiserum was produced against synthesized peptide derived from the C-terminal region of human SSX1/2/3/4/5/6/7/8/9. AA range:139-188
Specificity :	SSX Polyclonal Antibody detects endogenous levels of SSX protein.
Formulation :	Liquid in PBS containing 50% glycerol, 0.5% BSA and 0.02% sodium azide.
Source :	Rabbit
Dilution :	Western Blot: 1/500 - 1/2000. IHC-p: 1:100-300 ELISA: 1/20000. Not yet tested in other applications.
Purification :	The antibody was affinity-purified from rabbit antiserum by affinity-chromatography using epitope-specific immunogen.
Concentration :	1 mg/ml
Storage_stability :	-20°C/1 year
Msds :	MSDS_Antibody.pdf
Other_name :	SSX1; Protein SSX1; Cancer/testis antigen 5.1; CT5.1; Synovial sarcoma, X breakpoint 1; SSX2; SSX2A; SSX2B; Protein SSX2; Cancer/testis antigen 5.2; CT5.2; Synovial sarcoma, X breakpoint 2; Tumor antigen HOM-MEL-40; SSX3; Protein SSX3;Cancer/testis antigen 5.3; CT5.3; SSX4; SSX4A; SSX4B; Protein SSX4; Cancer/testis antigen 5.4; CT5.4; SSX5; Protein SSX5; SSX6; Putative protein SSX6; SSX7; Protein SSX7; SSX8; Protein SSX8; SSX9; Protein SSX9
Molecular	25KD

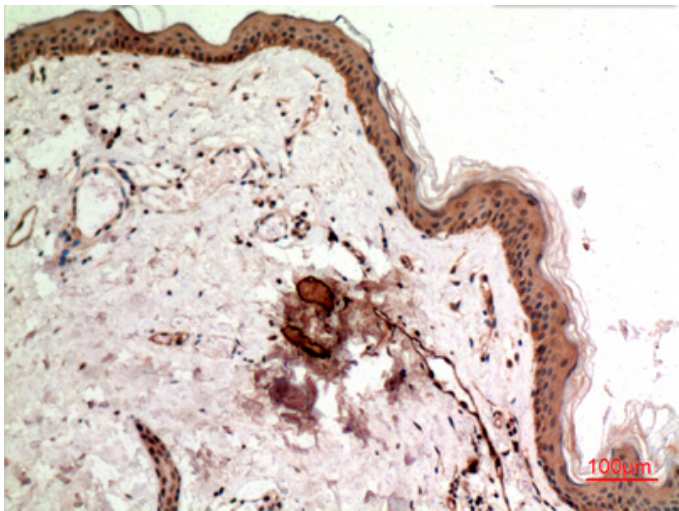


Weight :

Product Images



Western Blot analysis of 22RV-1, SW480 cells using SSX Polyclonal Antibody.. Secondary antibody was diluted at 1:20000



Immunohistochemical analysis of paraffin-embedded human-skin, antibody was diluted at 1:100