



## Angptl1/2 Polyclonal Antibody

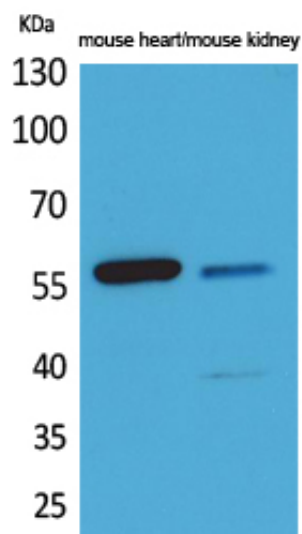
Catalog_no :	<u>AT5187</u>
Applications :	<u>WB,ELISA</u>
Reactivity :	<u>Human,Mouse,Rat</u>
Category :	<u>抗原抗体</u>
Size :	<u>100µg/50µg/20µg</u>
Gene_name :	<u>ANGPTL1/ANGPTL2</u>
Protein_name :	<u>Angiopoietin-related protein 1/Angiopoietin-related protein 2</u>
Humangene_id	<u><a href="#">9068</a></u>
:	
Humanswissprot	<u><a href="#">O95841</a></u>
_no :	
Mousegene_id :	<u><a href="#">72713</a></u>
Mouseswissprot	<u><a href="#">Q640P2</a></u>
_no :	
Immunogen :	<u>The antiserum was produced against synthesized peptide derived from the Internal region of human ANGPTL1/2. AA range:91-140</u>
Specificity :	<u>Angptl1/2 Polyclonal Antibody detects endogenous levels of Angptl1/2 protein.</u>
Formulation :	<u>Liquid in PBS containing 50% glycerol, 0.5% BSA and 0.02% sodium azide.</u>
Source :	<u>Rabbit</u>
Dilution :	<u>Western Blot: 1/500 - 1/2000. ELISA: 1/20000. Not yet tested in other applications.</u>
Purification :	<u>The antibody was affinity-purified from rabbit antiserum by affinity-chromatography using epitope-specific immunogen.</u>
Concentration :	<u>1 mg/ml</u>
Storage_stability	<u>-20°C/1 year</u>
:	
Msds :	<u>MSDS_Antibody.pdf</u>
Other_name :	<u>ANGPTL1; ANG3; ANGPT3; ARP1; PSEC0154; Angiopoietin-related protein 1; Angiopoietin-3; ANG-3; Angiopoietin-like protein 1; ANGPTL2; ARP2; Angiopoietin-related protein 2; Angiopoietin-like protein 2</u>
Molecular	<u>60KD</u>



Weight :

---

## Product Images



Western Blot analysis of mouse heart, mouse kidney cells using Angptl1/2 Polyclonal Antibody.. Secondary antibody was diluted at 1:20000