

## Cdc34 Polyclonal Antibody

Catalog_no :	AT5189
Applications :	WB,IHC-p,ELISA
Reactivity :	Human,Mouse,Rat
Category :	抗原抗体
Size :	100µg/50µg/20µg
Gene_name :	CDC34
Protein_name :	Ubiquitin-conjugating enzyme E2 R1
Humangene_id :	<a href="#">997</a>
Humanswissprot_no :	<a href="#">P49427</a>
Mousegene_id :	<a href="#">216150</a>
Mouseswissprot_no :	<a href="#">Q8CFI2</a>
Immunogen :	The antiserum was produced against synthesized peptide derived from the Internal region of human CDC34. AA range:121-170
Specificity :	Cdc34 Polyclonal Antibody detects endogenous levels of Cdc34 protein.
Formulation :	Liquid in PBS containing 50% glycerol, 0.5% BSA and 0.02% sodium azide.
Source :	Rabbit
Dilution :	Western Blot: 1/500 - 1/2000. IHC-p: 1:100-300 ELISA: 1/20000. Not yet tested in other applications.
Purification :	The antibody was affinity-purified from rabbit antiserum by affinity-chromatography using epitope-specific immunogen.
Concentration :	1 mg/ml
Storage_stability :	-20°C/1 year
Msds :	MSDS_Antibody.pdf
Other_name :	CDC34; UBCH3; UBE2R1; Ubiquitin-conjugating enzyme E2 R1; Ubiquitin-conjugating enzyme E2-32 kDa complementing; Ubiquitin-conjugating enzyme E2-CDC34; Ubiquitin-protein ligase R1

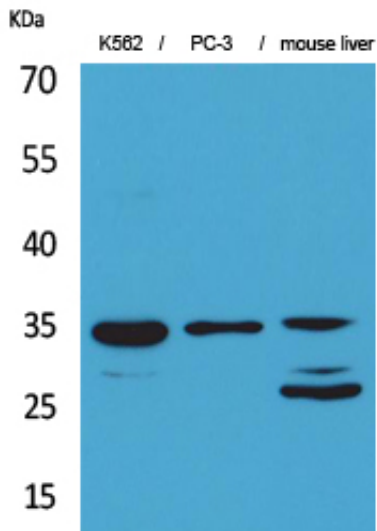


Molecular  
Weight :

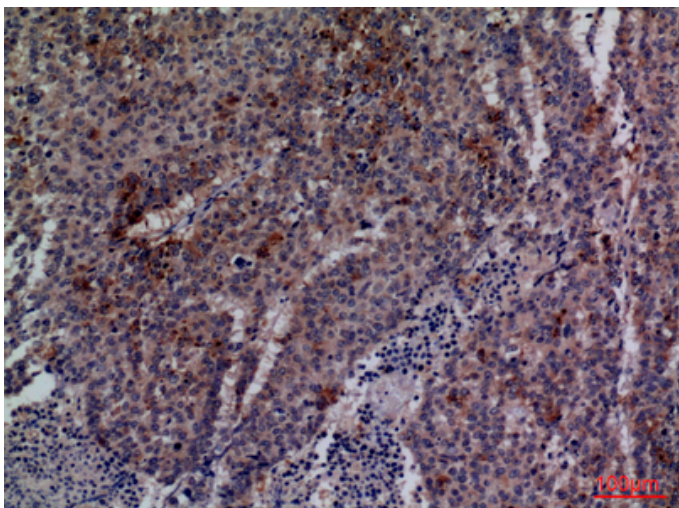
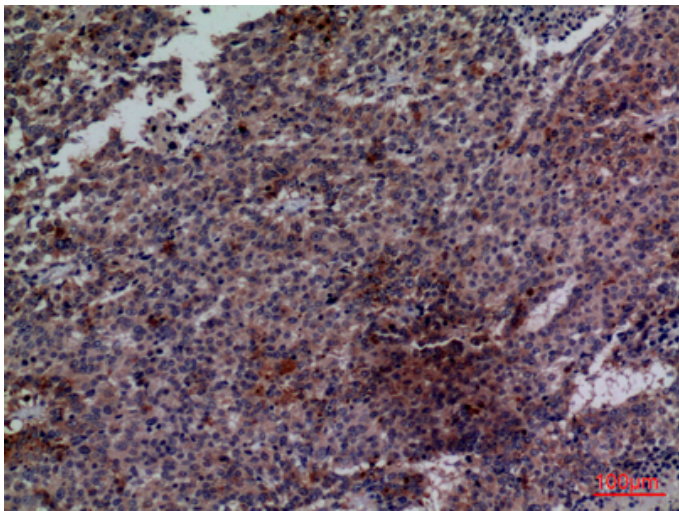
34KD

---

## Product Images



Western Blot analysis of K562, PC-3, mouse liver cells using Cdc34 Polyclonal Antibody. Secondary antibody was diluted at 1:20000 cells nucleus extracted by Minute TM Cytoplasmic and Nuclear Fractionation kit (SC-003, Inventbiotech, MN, USA).



Immunohistochemical analysis of paraffin-embedded human-lung-cancer, antibody was diluted at 1:100

Immunohistochemical analysis of paraffin-embedded human-lung-cancer, antibody was diluted at 1:100

