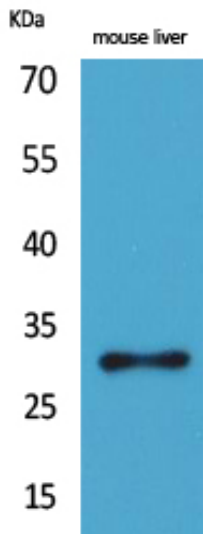


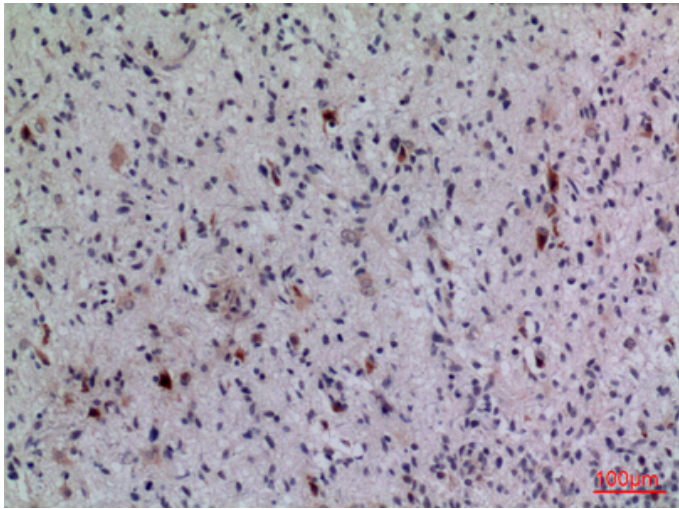
FGF-5 Polyclonal Antibody

| | |
|---------------------|---|
| Catalog_no : | AT5190 |
| Applications : | WB,IHC-p,ELISA |
| Reactivity : | Human |
| Category : | 抗原抗体 |
| Size : | 100µg/50µg/20µg |
| Gene_name : | FGF5 |
| Protein_name : | Fibroblast growth factor 5 |
| Humangene_id : | 2250 |
| Humanswissprot_no : | P12034 |
| Immunogen : | The antiserum was produced against synthesized peptide derived from the C-terminal region of human FGF5. AA range:211-260 |
| Specificity : | FGF-5 Polyclonal Antibody detects endogenous levels of FGF-5 protein. |
| Formulation : | Liquid in PBS containing 50% glycerol, 0.5% BSA and 0.02% sodium azide. |
| Source : | Rabbit |
| Dilution : | Western Blot: 1/500 - 1/2000. IHC-p: 1:100-300 ELISA: 1/20000. Not yet tested in other applications. |
| Purification : | The antibody was affinity-purified from rabbit antiserum by affinity-chromatography using epitope-specific immunogen. |
| Concentration : | 1 mg/ml |
| Storage_stability : | -20°C/1 year |
| Msds : | MSDS_Antibody.pdf |
| Other_name : | FGF5; Fibroblast growth factor 5; FGF-5; Heparin-binding growth factor 5; HBGF-5; Smag-82 |
| Molecular Weight : | 30KD |

Product Images



Western Blot analysis of mouse liver cells using FGF-5 Polyclonal Antibody.. Secondary antibody was diluted at 1:20000



Immunohistochemical analysis of paraffin-embedded human-brain, antibody was diluted at 1:100