

SP-A Polyclonal Antibody

Catalog_no :	AT5191
Applications :	WB,IHC-p,ELISA
Reactivity :	Human,Mouse,Rat
Category :	抗原抗体
Size :	100µg/50µg/20µg
Gene_name :	SFTPA2/SFTPA1
Protein_name :	Pulmonary surfactant-associated protein A2/Pulmonary surfactant-associated protein A1
Humangene_id :	729238
Humanswissprot_no :	Q8IWL1
Ratgene_id :	24773
Ratswissprot_no :	P08427
Immunogen :	The antiserum was produced against synthesized peptide derived from the Internal region of human SFTPA1/2. AA range:141-190
Specificity :	SP-A Polyclonal Antibody detects endogenous levels of SP-A protein.
Formulation :	Liquid in PBS containing 50% glycerol, 0.5% BSA and 0.02% sodium azide.
Source :	Rabbit
Dilution :	Western Blot: 1/500 - 1/2000. IHC-p: 1:100-300 ELISA: 1/20000. Not yet tested in other applications.
Purification :	The antibody was affinity-purified from rabbit antiserum by affinity-chromatography using epitope-specific immunogen.
Concentration :	1 mg/ml
Storage_stability :	-20°C/1 year
Msds :	MSDS_Antibody.pdf
Other_name :	SFTPA2; COLEC5; PSAP; SFTP1; SFTPA; SFTPA2B; Pulmonary surfactant-associated protein A2; PSP-A; PSPA; SP-A; SP-A2; 35 kDa pulmonary surfactant-associated protein; Alveolar proteinosis protein; Collectin-5; SFTPA1; COLEC4; PSAP;SFTP1; SFTPA; SFTPA1B;

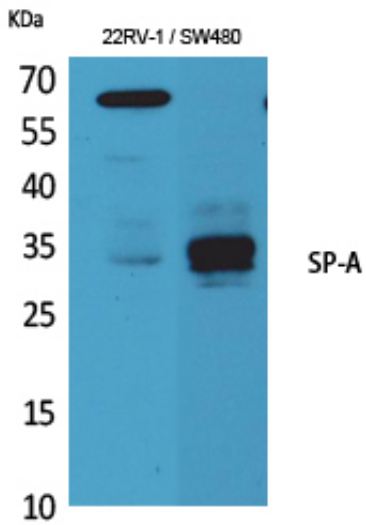


Pulmonary surfactant-associated protein A1; PSP-A; PSPA; SP-A; SP-A1; 35 kDa
pulmonary surfactant-associated protein; Alveolar proteinosis protein; Collectin-4

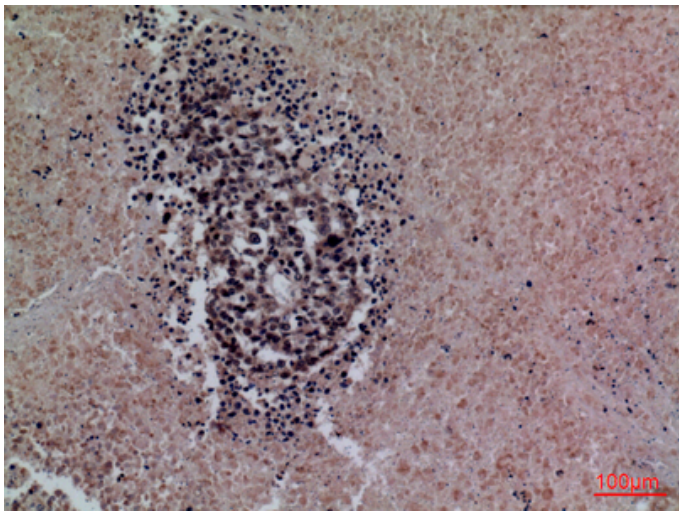
Molecular
Weight :

34KD

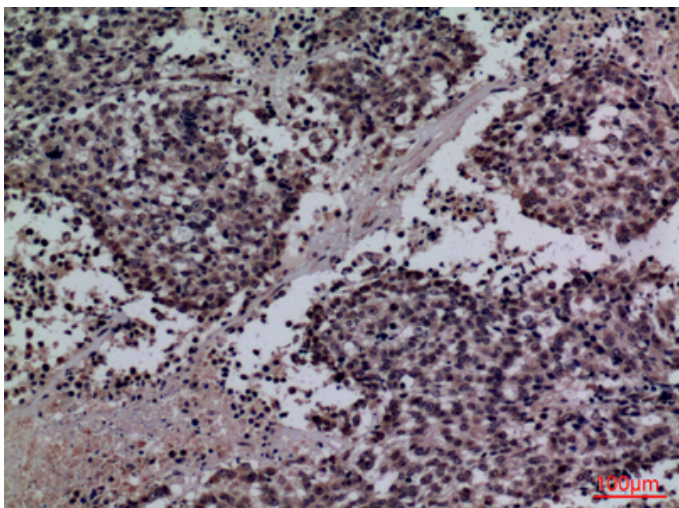
Product Images



Western Blot analysis of K562, mouse lung cells using SP-A Polyclonal Antibody.. Secondary antibody was diluted at 1:20000



Immunohistochemical analysis of paraffin-embedded human-lung-cancer, antibody was diluted at 1:100



Immunohistochemical analysis of paraffin-embedded human-lung-cancer, antibody was diluted at 1:100