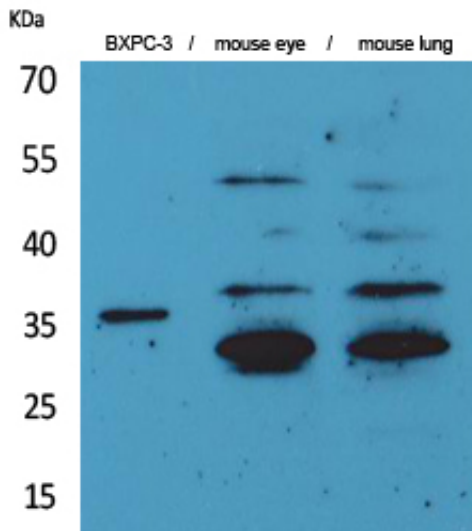


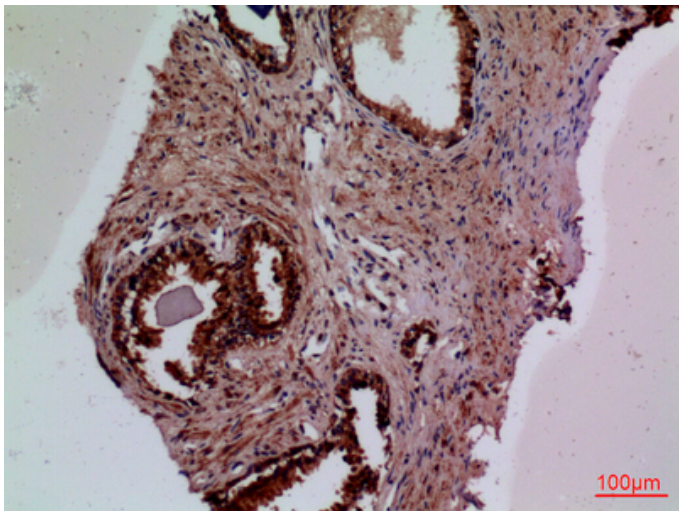
TF Polyclonal Antibody

Catalog_no :	AT5194
Applications :	WB,IHC-p,ELISA
Reactivity :	Human
Category :	抗原抗体
Size :	100µg/50µg/20µg
Gene_name :	F3
Protein_name :	Tissue factor
Humangene_id :	2152
Humanswissprot_no :	P13726
Immunogen :	The antiserum was produced against synthesized peptide derived from the Internal region of human F3. AA range:131-180
Specificity :	TF Polyclonal Antibody detects endogenous levels of TF protein.
Formulation :	Liquid in PBS containing 50% glycerol, 0.5% BSA and 0.02% sodium azide.
Source :	Rabbit
Dilution :	Western Blot: 1/500 - 1/2000. IHC-p: 1:100-300 ELISA: 1/20000. Not yet tested in other applications.
Purification :	The antibody was affinity-purified from rabbit antiserum by affinity-chromatography using epitope-specific immunogen.
Concentration :	1 mg/ml
Storage_stability :	-20°C/1 year
Msds :	MSDS_Antibody.pdf
Other_name :	F3; Tissue factor; TF; Coagulation factor III; Thromboplastin; CD142
Molecular Weight :	33KD

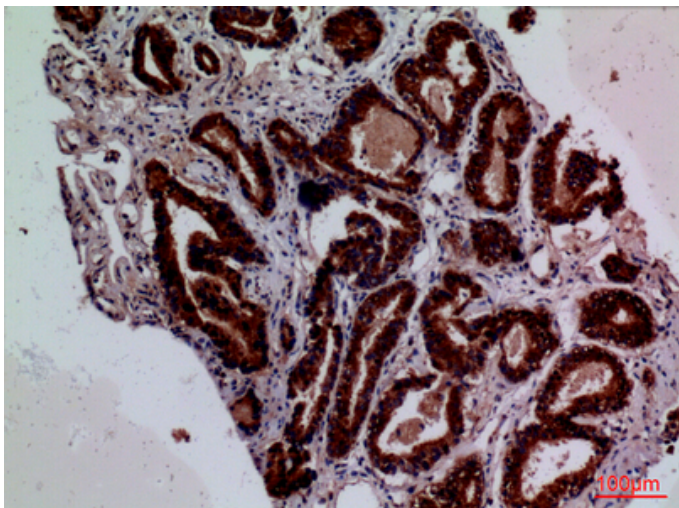
Product Images



Western Blot analysis of BXPC-3, mouse eye, mouse lung cells using TF Polyclonal Antibody.. Secondary antibody was diluted at 1:20000



Immunohistochemical analysis of paraffin-embedded human-prostate-cancer, antibody was diluted at 1:100



Immunohistochemical analysis of paraffin-embedded human-prostate-cancer, antibody was diluted at 1:100

Immunohistochemical analysis of paraffin-embedded human-lung-cancer, antibody was diluted at 1:100

