

CyPA Polyclonal Antibody

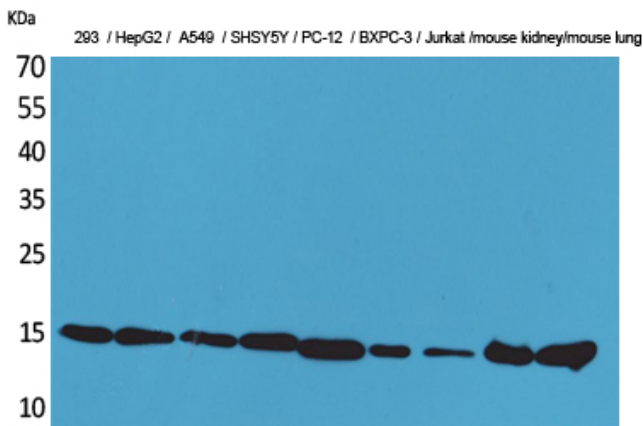
Catalog_no :	<u>AT5197</u>
Applications :	<u>WB,IHC-p,ELISA</u>
Reactivity :	<u>Human,Mouse,Rat</u>
Category :	<u>抗原抗体</u>
Size :	<u>100µg/50µg/20µg</u>
Gene_name :	<u>PPIA</u>
Protein_name :	<u>Peptidyl-prolyl cis-trans isomerase A</u>
Humangene_id	<u>5478</u>
:	<u></u>
Humanswissprot	<u>P62937</u>
_no :	<u></u>
Mousegene_id :	<u>268373</u>
Mouseswissprot	<u>P17742</u>
_no :	<u></u>
Ratgene_id :	<u>100360977</u>
Ratswissprot_no	<u>P10111</u>
:	<u></u>
Immunogen :	<u>The antiserum was produced against synthesized peptide derived from the Internal region of human PPIA. AA range:51-100</u>
Specificity :	<u>CyPA Polyclonal Antibody detects endogenous levels of CyPA protein.</u>
Formulation :	<u>Liquid in PBS containing 50% glycerol, 0.5% BSA and 0.02% sodium azide.</u>
Source :	<u>Rabbit</u>
Dilution :	<u>Western Blot: 1/500 - 1/2000. IHC-p: 1:100-300 ELISA: 1/20000. Not yet tested in other applications.</u>
Purification :	<u>The antibody was affinity-purified from rabbit antiserum by affinity-chromatography using epitope-specific immunogen.</u>
Concentration :	<u>1 mg/ml</u>
Storage_stability	<u>-20°C/1 year</u>
:	<u></u>
Msds :	<u>MSDS_Antibody.pdf</u>



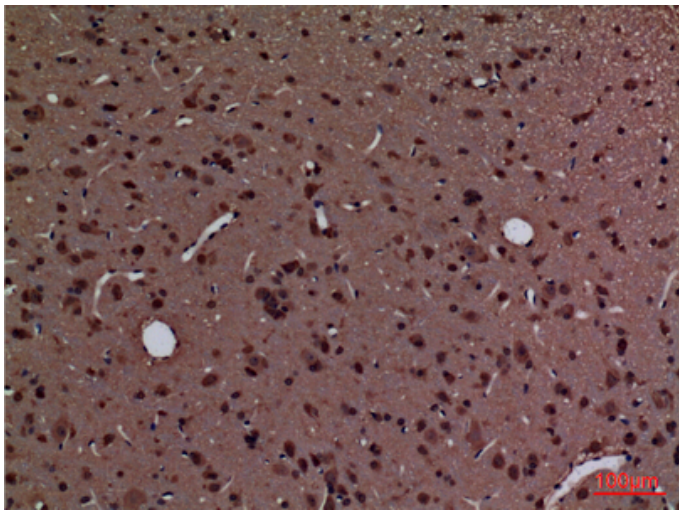
Other_name : PPIA; CYPA; Peptidyl-prolyl cis-trans isomerase A; PPIase A; Cyclophilin A; Cyclosporin A-binding protein; Rotamase A

Molecular Weight : 18KD

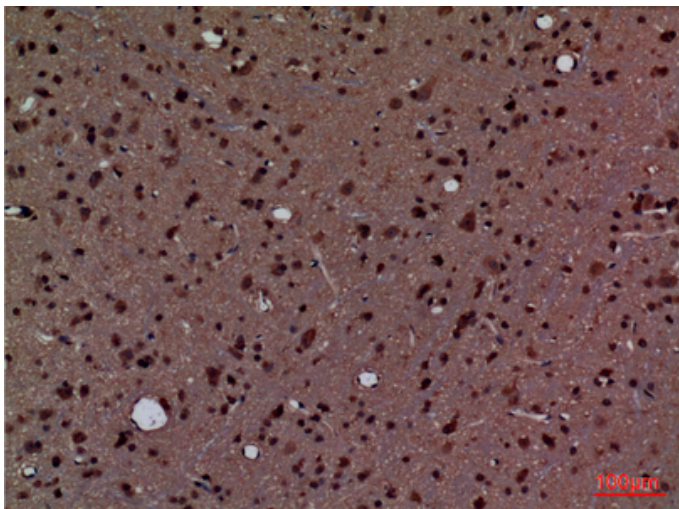
Product Images



Western Blot analysis of 293, HepG2, A549, SHSY5Y, PC-12, BXP-3, Jurkat, mouse kidney, mouse lung cells using CyPA Polyclonal Antibody.. Secondary antibody was diluted at 1:20000

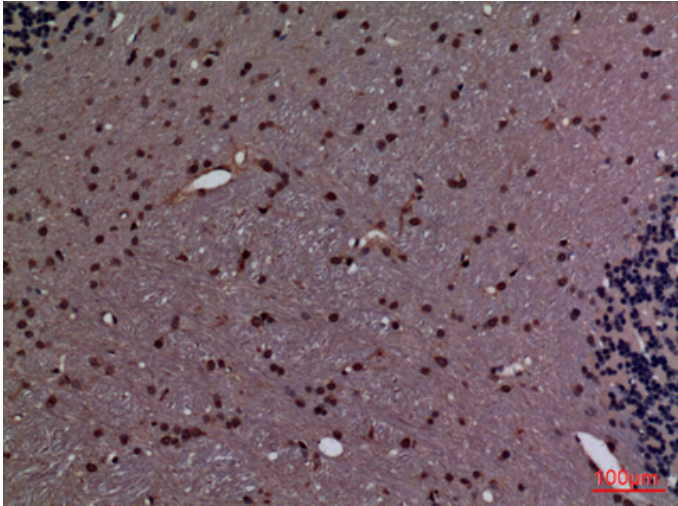


Immunohistochemical analysis of paraffin-embedded rat-brain, antibody was diluted at 1:100

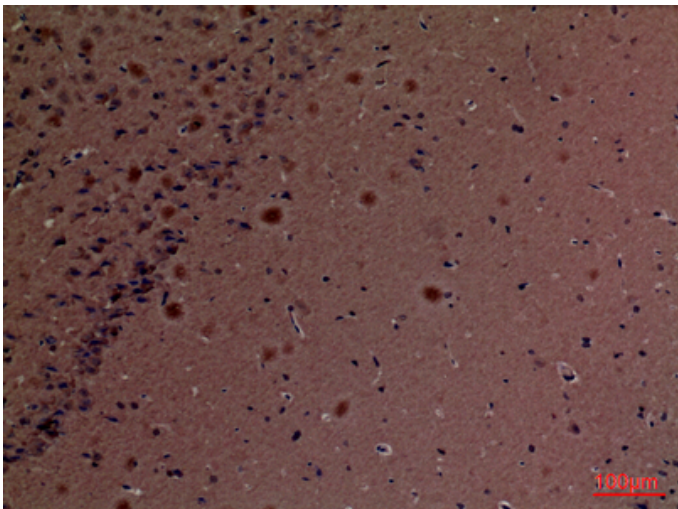


Immunohistochemical analysis of paraffin-embedded rat-brain, antibody was diluted at 1:100

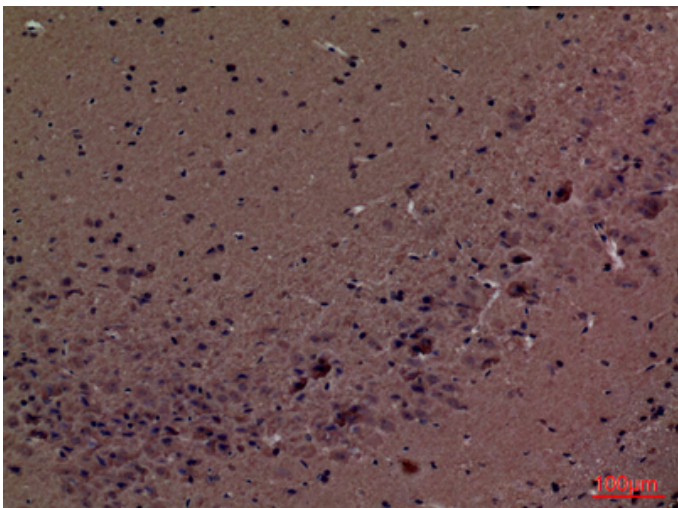
Immunohistochemical analysis of paraffin-embedded rat-brain, antibody was diluted at 1:100



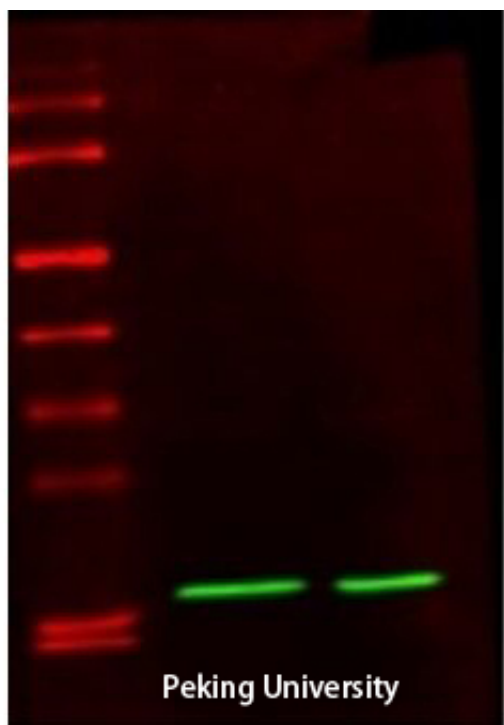
Immunohistochemical analysis of paraffin-embedded mouse-brain, antibody was diluted at 1:100



Immunohistochemical analysis of paraffin-embedded mouse-brain, antibody was diluted at 1:100



The picture was kindly provided by our customer



Ppia