

Cdk4 Polyclonal Antibody

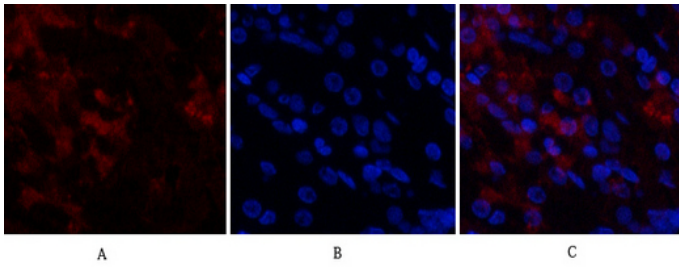
Catalog_no :	AT5198
Applications :	IF,WB,IHC-p,ELISA
Reactivity :	Human,Mouse,Rat
Category :	抗原抗体
Size :	100µg/50µg/20µg
Gene_name :	CDK4
Protein_name :	Cyclin-dependent kinase 4
Humangene_id	1019
:	
Humanswissprot	P11802
_no :	
Mousegene_id :	12567
Mouseswissprot	P30285
_no :	
Ratgene_id :	94201
Ratswissprot_no	P35426
:	
Immunogen :	The antiserum was produced against synthesized peptide derived from the N-terminal region of human CDK4. AA range:1-50
Specificity :	Cdk4 Polyclonal Antibody detects endogenous levels of Cdk4 protein.
Formulation :	Liquid in PBS containing 50% glycerol, 0.5% BSA and 0.02% sodium azide.
Source :	Rabbit
Dilution :	IF: 1:50-200 Western Blot: 1/500 - 1/2000. IHC-p: 1:100-300 ELISA: 1/20000. Not yet tested in other applications.
Purification :	The antibody was affinity-purified from rabbit antiserum by affinity-chromatography using epitope-specific immunogen.
Concentration :	1 mg/ml
Storage_stability	-20°C/1 year
:	
Msds :	MSDS_Antibody.pdf



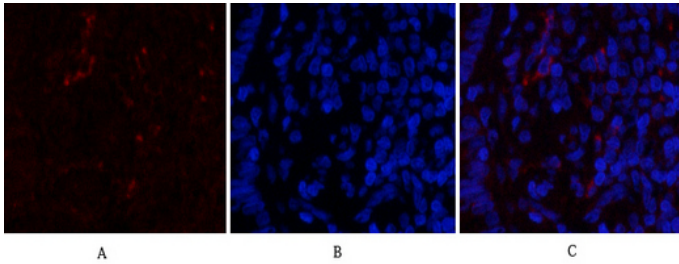
Other_name : CDK4; Cyclin-dependent kinase 4; Cell division protein kinase 4; PSK-J3

Molecular Weight : 35KD

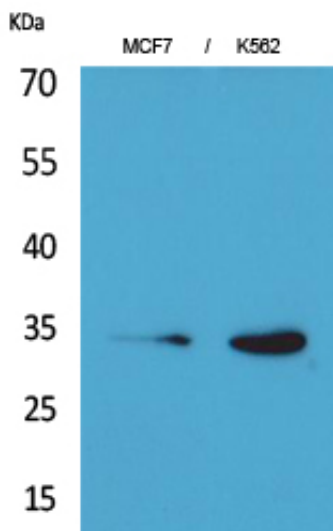
Product Images



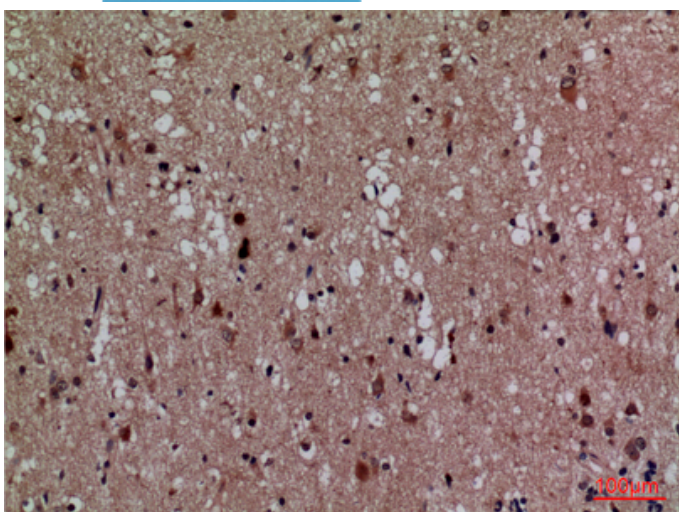
Immunofluorescence analysis of human-stomach tissue. 1, Cdk4 Polyclonal Antibody (red) was diluted at 1:200 (4°C, overnight). 2, Cy3 labeled Secondary antibody was diluted at 1:300 (room temperature, 50min). 3, Picture B: DAPI (blue) 10min. Picture A: Target. Picture B: DAPI. Picture C: merge of A+B



Immunofluorescence analysis of rat-lung tissue. 1, Cdk4 Polyclonal Antibody (red) was diluted at 1:200 (4°C, overnight). 2, Cy3 labeled Secondary antibody was diluted at 1:300 (room temperature, 50min). 3, Picture B: DAPI (blue) 10min. Picture A: Target. Picture B: DAPI. Picture C: merge of A+B

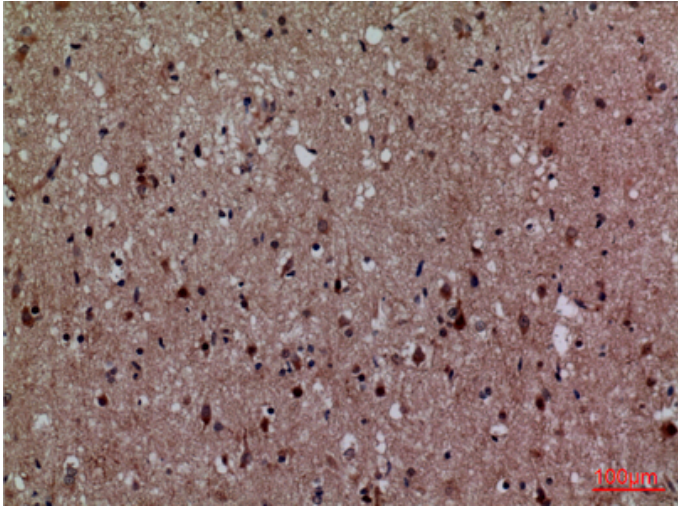


Western Blot analysis of MCF7, K562 cells using Cdk4 Polyclonal Antibody. Secondary antibody was diluted at 1:20000

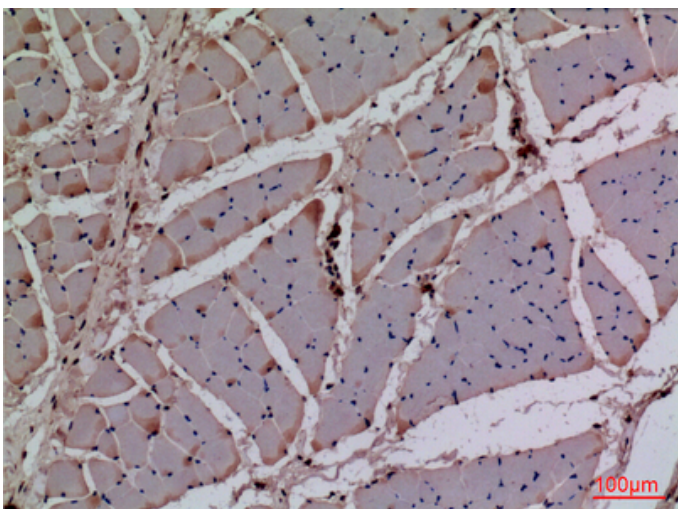
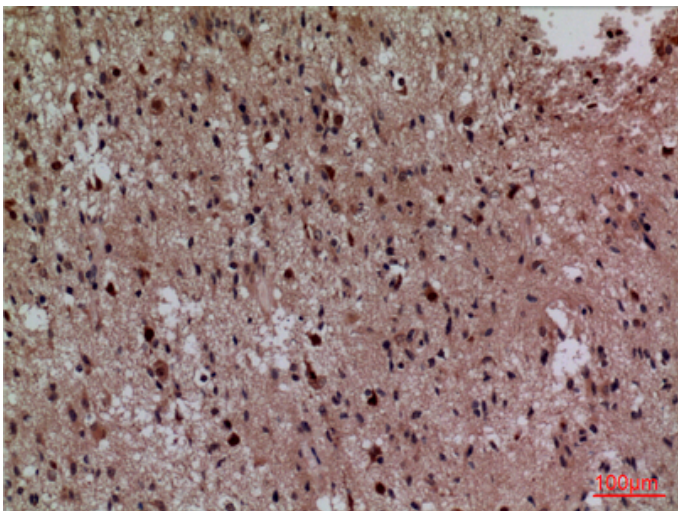


Immunohistochemical analysis of paraffin-embedded human-brain, antibody was diluted at 1:100

Immunohistochemical analysis of paraffin-embedded human-brain, antibody was diluted at 1:100



Immunohistochemical analysis of paraffin-embedded human-brain, antibody was diluted at 1:100



Immunohistochemical analysis of paraffin-embedded rat-muscle, antibody was diluted at 1:100

Immunohistochemical analysis of paraffin-embedded rat-muscle, antibody was diluted at 1:100

