



## IL-1 $\beta$ Polyclonal Antibody

|                     |  |
|---------------------|--|
| Catalog_no :        | <u>AT5201</u>  |
| Applications :      | <u>WB,IHC-p,ELISA</u>  |
| Reactivity :        | <u>Human,Mouse,Rat</u>   |
| Category :          | <u>抗原抗体</u>  |
| Size :              | <u>100<math>\mu</math>g/50<math>\mu</math>g/20<math>\mu</math>g</u>  |
| Gene_name :         | <u>IL1B</u>  |
| Protein_name :      | <u>Interleukin-1 beta</u>  |
| Humangene_id :      | <u><a href="#">3553</a></u>  |
| Humanswissprot_no : | <u><a href="#">P01584</a></u>  |
| Mousegene_id :      | <u><a href="#">16176</a></u>   |
| Mouseswissprot_no : | <u><a href="#">P10749</a></u>  |
| Ratswissprot_no :   | <u><a href="#">Q63264</a></u>  |
| Immunogen :         | <u>The antiserum was produced against synthesized peptide derived from the Internal region of human IL1B. AA range:181-230</u> |
| Specificity :       | <u>IL-1<math>\beta</math> Polyclonal Antibody detects endogenous levels of IL-1<math>\beta</math> protein.</u>                 |
| Formulation :       | <u>Liquid in PBS containing 50% glycerol, 0.5% BSA and 0.02% sodium azide.</u>   |
| Source :            | <u>Rabbit</u>  |
| Dilution :          | <u>Western Blot: 1/500 - 1/2000. IHC-p: 1:100-300 ELISA: 1/20000. Not yet tested in other applications.</u>                    |
| Purification :      | <u>The antibody was affinity-purified from rabbit antiserum by affinity-chromatography using epitope-specific immunogen.</u>   |
| Concentration :     | <u>1 mg/ml</u>   |
| Storage_stability : | <u>-20°C/1 year</u>  |
| Msds :              | <u><a href="#">MSDS_Antibody.pdf</a></u>   |
| Other_name :        | <u>IL1B; IL1F2; Interleukin-1 beta; IL-1 beta; Catabolin</u>   |

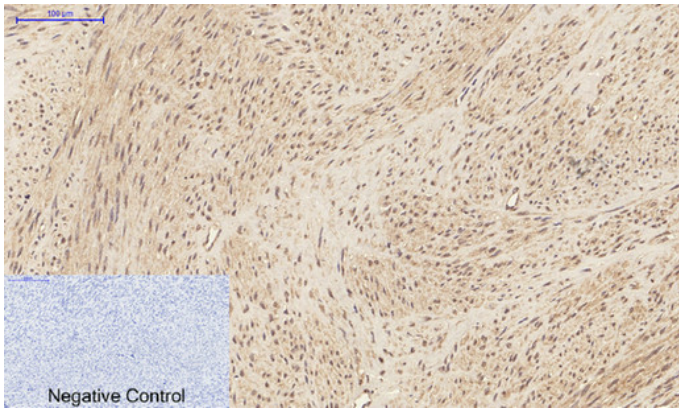


Molecular  
Weight :

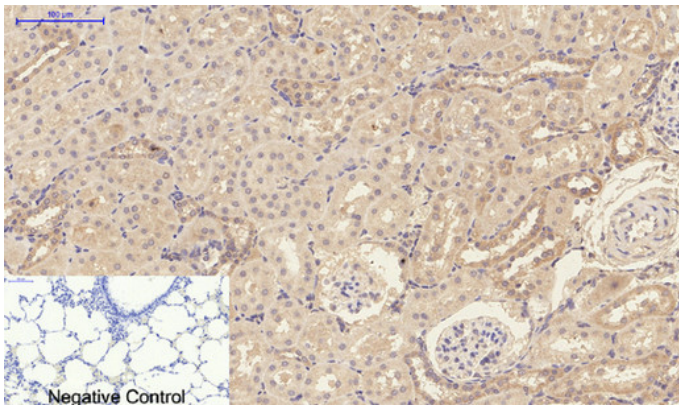
17KD

---

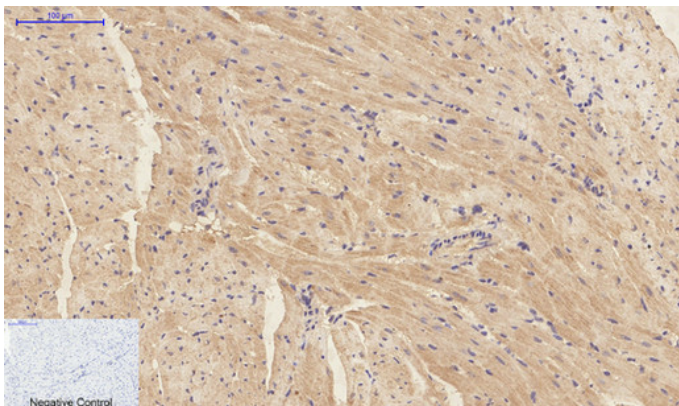
## Product Images



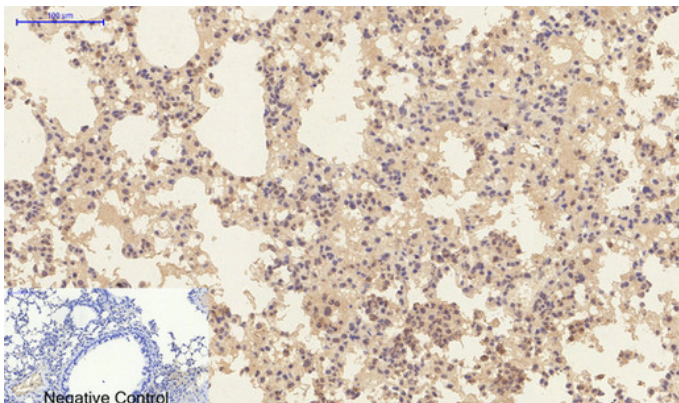
Immunohistochemical analysis of paraffin-embedded Human-uterus tissue. 1,IL-1 $\beta$  Polyclonal Antibody was diluted at 1:200(4°C,overnight). 2, Sodium citrate pH 6.0 was used for antibody retrieval(>98°C,20min). 3,Secondary antibody was diluted at 1:200(room temperature, 30min). Negative control was used by secondary antibody only.



Immunohistochemical analysis of paraffin-embedded Rat-lung tissue. 1,IL-1 $\beta$  Polyclonal Antibody was diluted at 1:200(4°C,overnight). 2, Sodium citrate pH 6.0 was used for antibody retrieval(>98°C,20min). 3,Secondary antibody was diluted at 1:200(room temperature, 30min). Negative control was used by secondary antibody only.

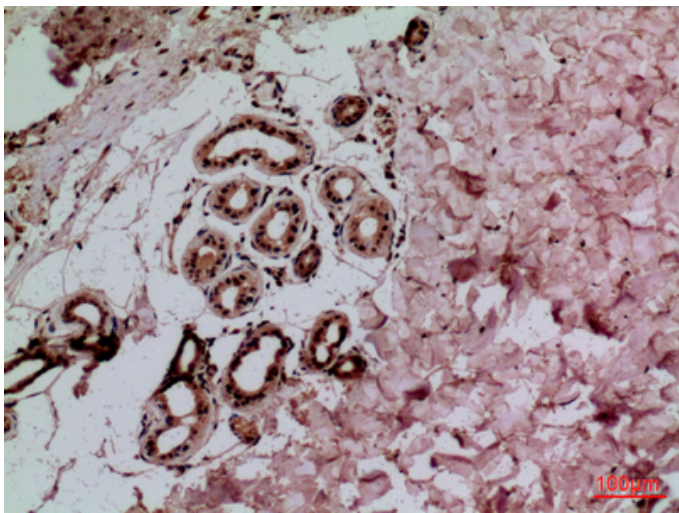
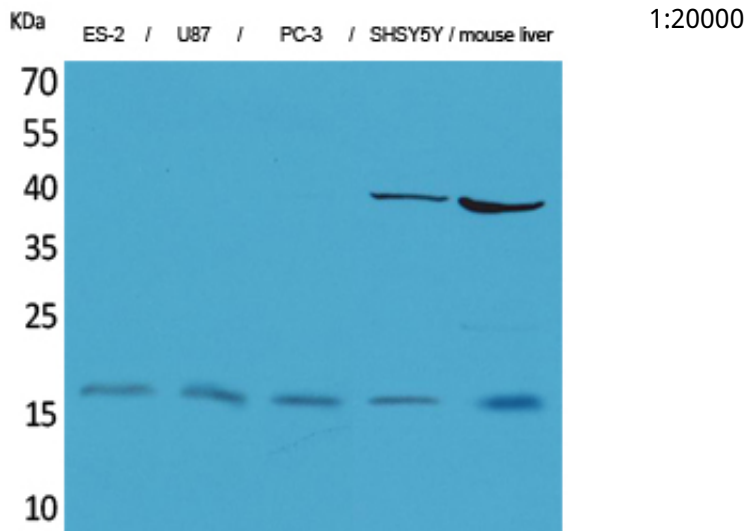


Immunohistochemical analysis of paraffin-embedded Mouse-heart tissue. 1,IL-1 $\beta$  Polyclonal Antibody was diluted at 1:200(4°C,overnight). 2, Sodium citrate pH 6.0 was used for antibody retrieval(>98°C,20min). 3,Secondary antibody was diluted at 1:200(room temperature, 30min). Negative control was used by secondary antibody only.

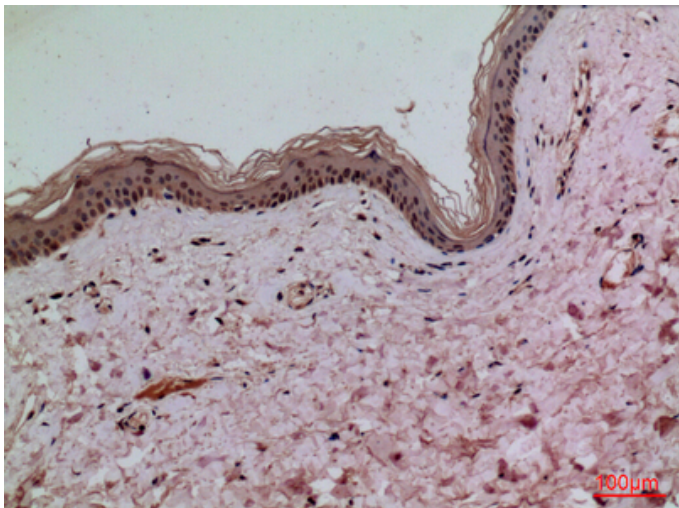


Immunohistochemical analysis of paraffin-embedded Mouse-lung tissue. 1,IL-1 $\beta$  Polyclonal Antibody was diluted at 1:200(4°C,overnight). 2, Sodium citrate pH 6.0 was used for antibody retrieval(>98°C,20min). 3,Secondary antibody was diluted at 1:200(room temperature, 30min). Negative control was used by secondary antibody only.

Western Blot analysis of ES-2, U87, PC-3, SHSY5Y, mouse liver cells using IL-1 $\beta$  Polyclonal Antibody. Antibody was diluted at 1:2000. Secondary antibody was diluted at

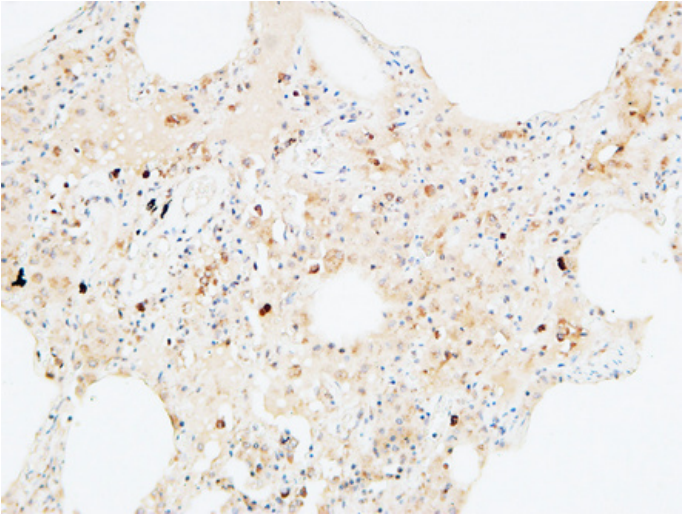


Immunohistochemical analysis of paraffin-embedded human-skin, antibody was diluted at 1:100

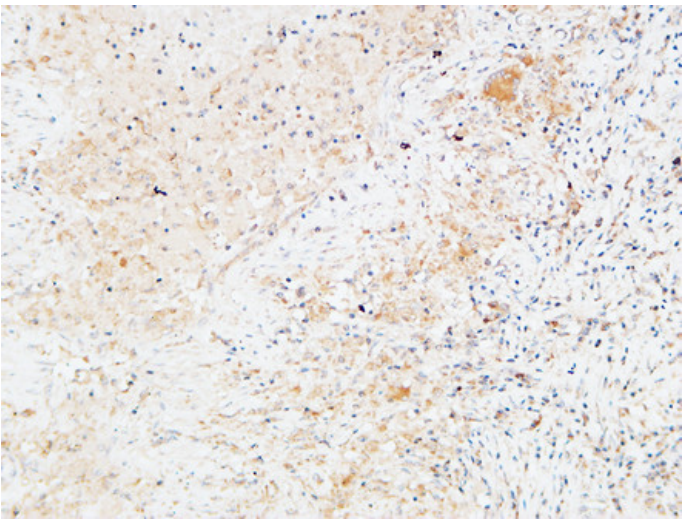


Immunohistochemical analysis of paraffin-embedded human-skin, antibody was diluted at 1:100

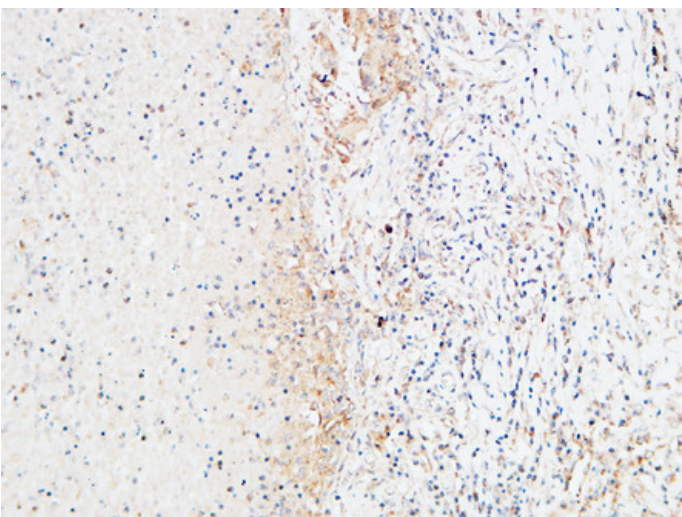
Immunohistochemical analysis of paraffin-embedded Human lung. 1, Antibody was diluted at 1:200(4°, overnight). 2, High-pressure and temperature EDTA, pH8.0 was used for antigen retrieval. 3, Secondary antibody was diluted at 1:200(room temperature, 30min).



Immunohistochemical analysis of paraffin-embedded Human lung. 1, Antibody was diluted at 1:200(4°,overnight). 2, High-pressure and temperature EDTA, pH8.0 was used for antigen retrieval. 3,Secondary antibody was diluted at 1:200(room temperature, 30min).



Immunohistochemical analysis of paraffin-embedded Human lung. 1, Antibody was diluted at 1:200(4°,overnight). 2, High-pressure and temperature EDTA, pH8.0 was used for antigen retrieval. 3,Secondary antibody was diluted at 1:200(room temperature, 30min).



Immunohistochemical analysis of paraffin-embedded Human lung. 1, Antibody was diluted at 1:200(4°,overnight). 2, High-pressure and temperature EDTA, pH8.0 was used for antigen retrieval. 3,Secondary antibody was diluted at 1:200(room temperature, 30min).

