

ADM Polyclonal Antibody

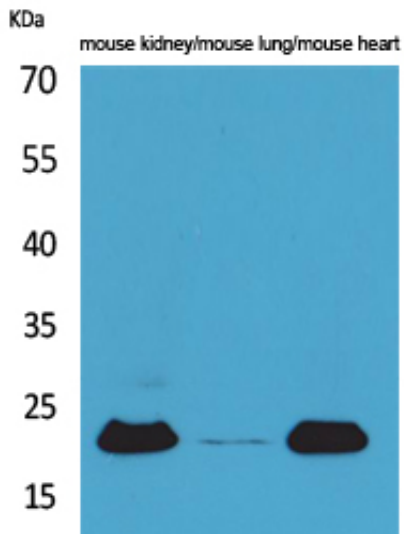
Catalog_no :	AT5202
Applications :	WB,IHC-p,ELISA
Reactivity :	Human,Rat
Category :	抗原抗体
Size :	100µg/50µg/20µg
Gene_name :	ADM
Protein_name :	ADM
Humangene_id :	133
Humanswissprot_no :	P35318
Ratgene_id :	25026
Ratswissprot_no :	P43145
Immunogen :	The antiserum was produced against synthesized peptide derived from the Internal region of human ADM. AA range:101-150
Specificity :	ADM Polyclonal Antibody detects endogenous levels of ADM protein.
Formulation :	Liquid in PBS containing 50% glycerol, 0.5% BSA and 0.02% sodium azide.
Source :	Rabbit
Dilution :	Western Blot: 1/500 - 1/2000. IHC-p: 1:100-300 ELISA: 1/20000. Not yet tested in other applications.
Purification :	The antibody was affinity-purified from rabbit antiserum by affinity-chromatography using epitope-specific immunogen.
Concentration :	1 mg/ml
Storage_stability :	-20°C/1 year
Msds :	MSDS_Antibody.pdf
Other_name :	ADM; AM; ADM
Molecular Weight :	20KD



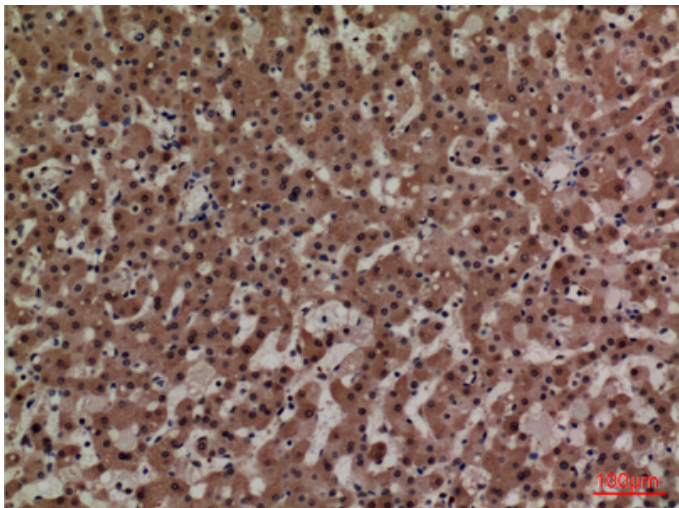
专注二抗产品

Biodragon旗下品牌

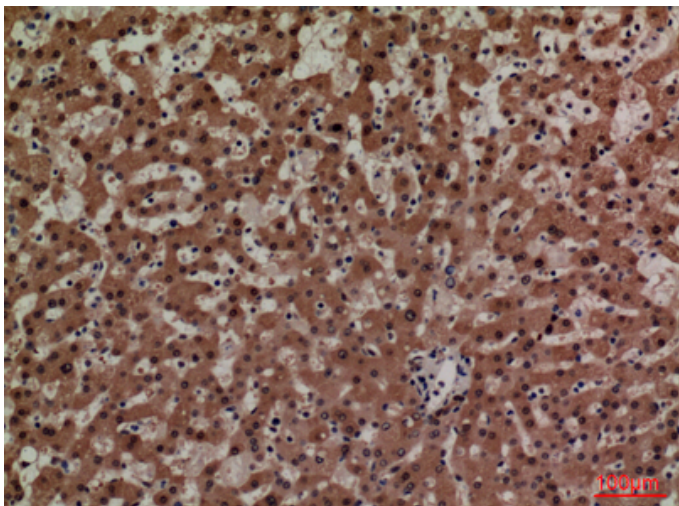
Product Images



Western Blot analysis of mouse kidney, mouse lung, mouse heart cells using ADM Polyclonal Antibody.. Secondary antibody was diluted at 1:20000

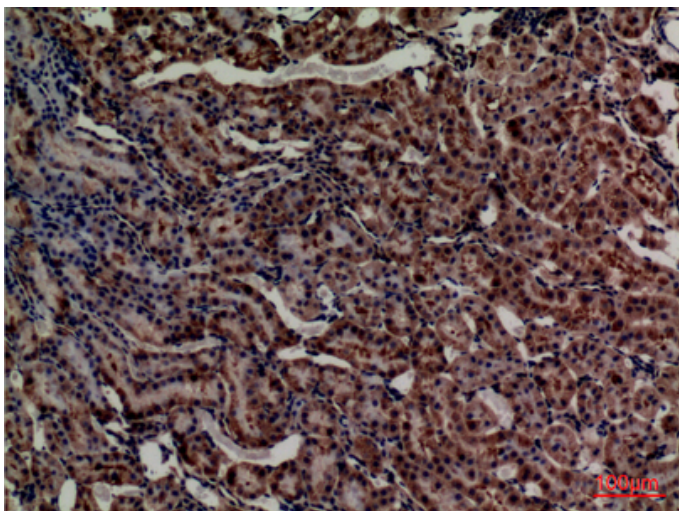
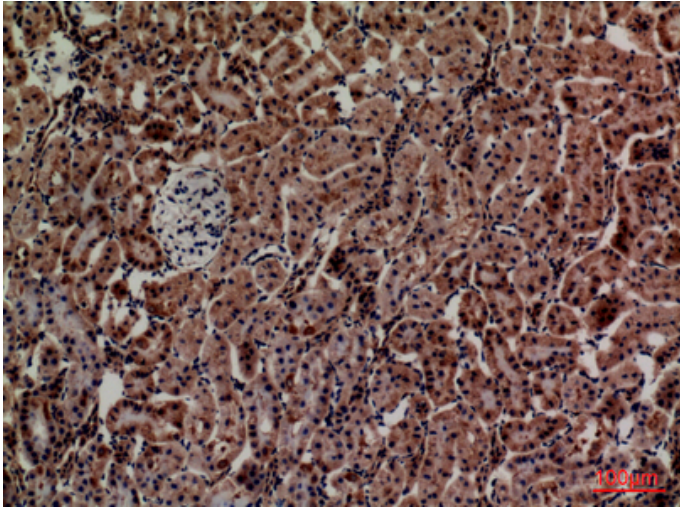


Immunohistochemical analysis of paraffin-embedded human-liver, antibody was diluted at 1:100



Immunohistochemical analysis of paraffin-embedded human-liver, antibody was diluted at 1:100

Immunohistochemical analysis of paraffin-embedded rat-kidney, antibody was diluted at 1:100



Immunohistochemical analysis of paraffin-embedded rat-kidney, antibody was diluted at 1:100