

Glypican-3 Polyclonal Antibody

Catalog_no :	AT5206
Applications :	WB,IHC-p,ELISA
Reactivity :	Human,Mouse,Rat
Category :	抗原抗体
Size :	100µg/50µg/20µg
Gene_name :	GPC3
Protein_name :	Glypican-3
Humangene_id :	2719
Humanswissprot_no :	P51654
Mousegene_id :	14734
Mouseswissprot_no :	Q8CFZ4
Ratgene_id :	25236
Ratswissprot_no :	P13265
Immunogen :	The antiserum was produced against synthesized peptide derived from the Internal region of human GPC3. AA range:461-510
Specificity :	Glypican-3 Polyclonal Antibody detects endogenous levels of Glypican-3 protein.
Formulation :	Liquid in PBS containing 50% glycerol, 0.5% BSA and 0.02% sodium azide.
Source :	Rabbit
Dilution :	Western Blot: 1/500 - 1/2000. IHC-p: 1:100-300 ELISA: 1/20000. Not yet tested in other applications.
Purification :	The antibody was affinity-purified from rabbit antiserum by affinity-chromatography using epitope-specific immunogen.
Concentration :	1 mg/ml
Storage_stability :	-20°C/1 year
Msds :	MSDS_Antibody.pdf



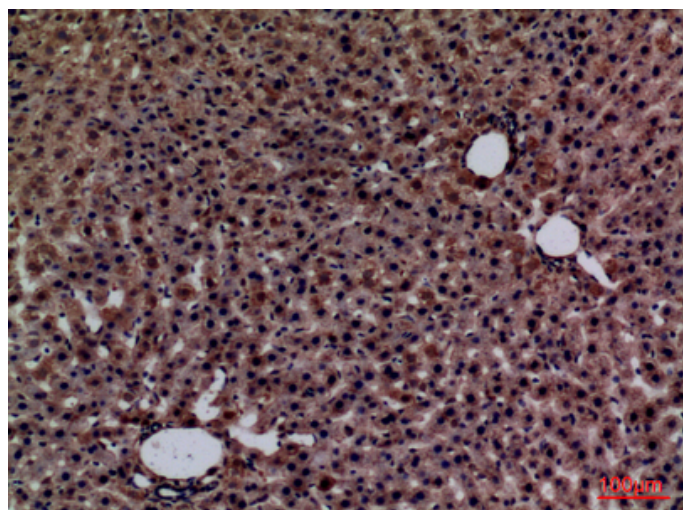
Other_name : GPC3; OCI5; Glypican-3; GTR2-2; Intestinal protein OCI-5; MXR7

Molecular Weight : 70KD

Product Images



Western Blot analysis of HepG2 cells using Glypican-3 Polyclonal Antibody.. Secondary antibody was diluted at 1:20000



Immunohistochemical analysis of paraffin-embedded rat-liver, antibody was diluted at 1:100