

Calbindin D28K Polyclonal Antibody

Catalog_no :	AT5209
Applications :	WB,IHC-p,ELISA
Reactivity :	Human,Mouse,Rat
Category :	抗原抗体
Size :	100µg/50µg/20µg
Gene_name :	CALB1
Protein_name :	Calbindin
Humangene_id :	793
Humanswissprot_no :	P05937
Mousegene_id :	12307
Mouseswissprot_no :	P12658
Ratgene_id :	83839
Ratswissprot_no :	P07171
Immunogen :	The antiserum was produced against synthesized peptide derived from the C-terminal region of human CALB1. AA range:191-240
Specificity :	Calbindin D28K Polyclonal Antibody detects endogenous levels of Calbindin D28K protein.
Formulation :	Liquid in PBS containing 50% glycerol, 0.5% BSA and 0.02% sodium azide.
Source :	Rabbit
Dilution :	Western Blot: 1/500 - 1/2000. IHC-p: 1:100-300 ELISA: 1/20000. Not yet tested in other applications.
Purification :	The antibody was affinity-purified from rabbit antiserum by affinity-chromatography using epitope-specific immunogen.
Concentration :	1 mg/ml
Storage_stability :	-20°C/1 year

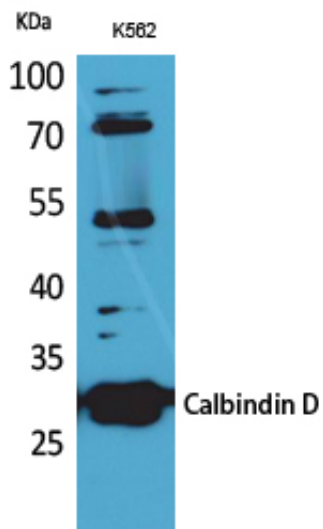


MsdS : [MSDS_Antibody.pdf](#)

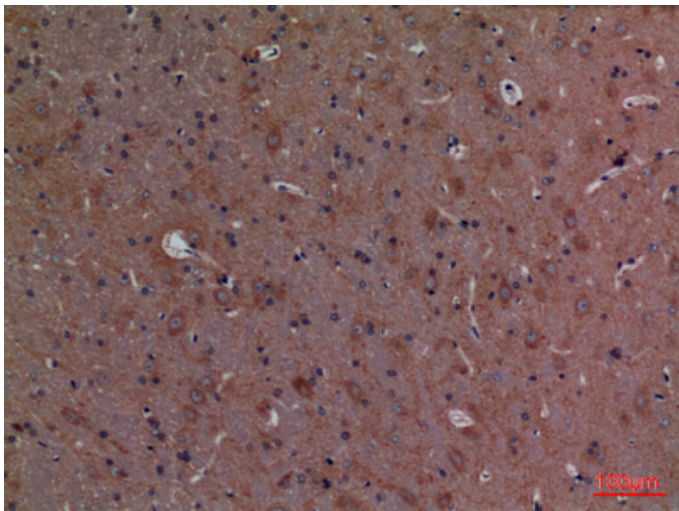
Other_name : CALB1; CAB27; Calbindin; Calbindin D28; D-28K; Vitamin D-dependent calcium-binding protein, avian-type

Molecular Weight : 30KD

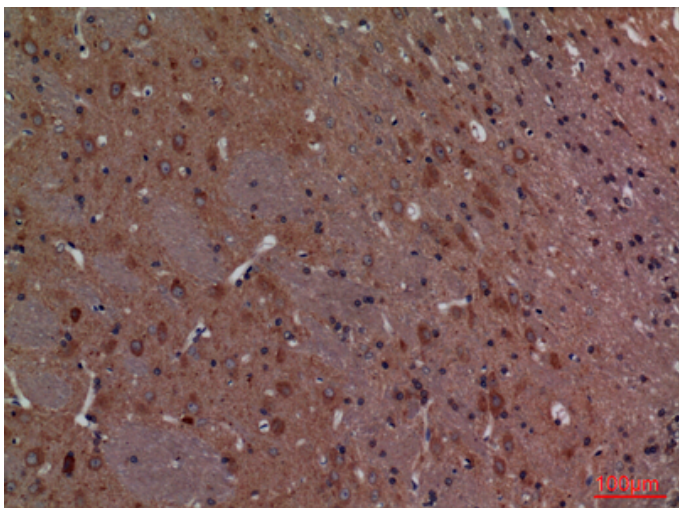
Product Images



Western Blot analysis of K562 cells using Calbindin D28K Polyclonal Antibody. Antibody was diluted at 1:1000. Secondary antibody was diluted at 1:20000



Immunohistochemical analysis of paraffin-embedded rat-brain, antibody was diluted at 1:100



Immunohistochemical analysis of paraffin-embedded rat-brain, antibody was diluted at 1:100