

## Fascin 1 Polyclonal Antibody

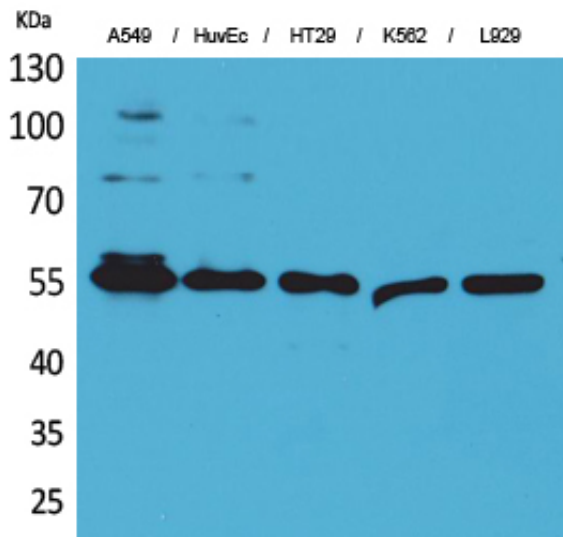
Catalog_no :	AT5212
Applications :	WB,IHC-p,ELISA
Reactivity :	Human,Mouse,Rat
Category :	抗原抗体
Size :	100µg/50µg/20µg
Gene_name :	FSCN1
Protein_name :	Fascin
Humangene_id :	<a href="#">6624</a>
Humanswissprot_no :	<a href="#">Q16658</a>
Mousegene_id :	<a href="#">14086</a>
Mouseswissprot_no :	<a href="#">Q61553</a>
Ratgene_id :	<a href="#">683788</a>
Ratswissprot_no :	<a href="#">P85845</a>
Immunogen :	The antiserum was produced against synthesized peptide derived from the Internal region of human FSCN1. AA range:261-310
Specificity :	Fascin 1 Polyclonal Antibody detects endogenous levels of Fascin 1 protein.
Formulation :	Liquid in PBS containing 50% glycerol, 0.5% BSA and 0.02% sodium azide.
Source :	Rabbit
Dilution :	Western Blot: 1/500 - 1/2000. IHC-p: 1:100-300 ELISA: 1/20000. Not yet tested in other applications.
Purification :	The antibody was affinity-purified from rabbit antiserum by affinity-chromatography using epitope-specific immunogen.
Concentration :	1 mg/ml
Storage_stability :	-20°C/1 year
Msds :	MSDS_Antibody.pdf



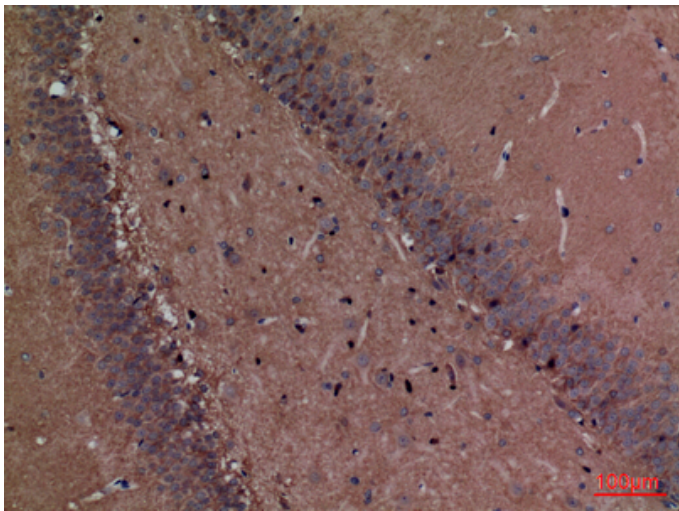
Other\_name : FSCN1; FAN1; HSN; SNL; Fascin; 55 kDa actin-bundling protein; Singed-like protein; p55

Molecular Weight : 55KD

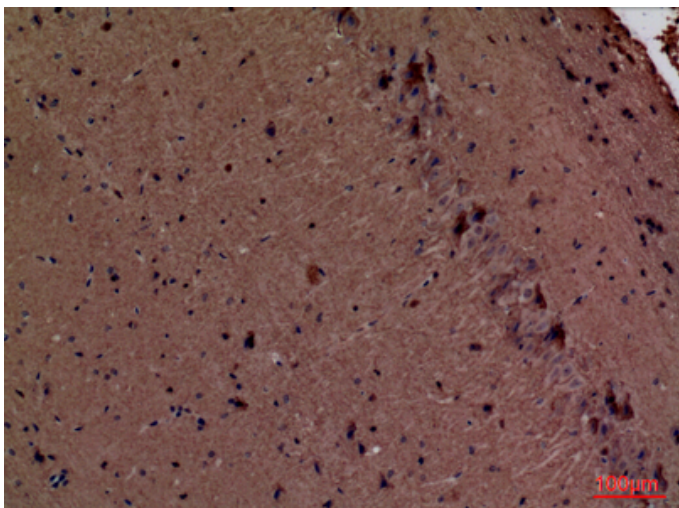
## Product Images



Western Blot analysis of A549, HuvEc, HT29, K562, L929 cells using Fascin 1 Polyclonal Antibody.. Secondary antibody was diluted at 1:20000



Immunohistochemical analysis of paraffin-embedded rat-brain, antibody was diluted at 1:100



Immunohistochemical analysis of paraffin-embedded mouse-brain, antibody was diluted at 1:100

Immunohistochemical analysis of paraffin-embedded mouse-brain, antibody was diluted at 1:100

