

## Keap1 Polyclonal Antibody

Catalog_no :	AT5218
Applications :	WB,IHC-p,ELISA
Reactivity :	Human,Mouse,Rat
Category :	抗原抗体
Size :	100µg/50µg/20µg
Gene_name :	KEAP1
Protein_name :	Kelch-like ECH-associated protein 1
Humangene_id :	<a href="#">9817</a>
Humanswissprot_no :	<a href="#">Q14145</a>
Mousegene_id :	<a href="#">50868</a>
Mouseswissprot_no :	<a href="#">Q9Z2X8</a>
Ratgene_id :	<a href="#">117519</a>
Ratswissprot_no :	<a href="#">P57790</a>
Immunogen :	The antiserum was produced against synthesized peptide derived from the Internal region of human KEAP1. AA range:411-460
Specificity :	Keap1 Polyclonal Antibody detects endogenous levels of Keap1 protein.
Formulation :	Liquid in PBS containing 50% glycerol, 0.5% BSA and 0.02% sodium azide.
Source :	Rabbit
Dilution :	Western Blot: 1/500 - 1/2000. IHC-p: 1:100-300 ELISA: 1/20000. Not yet tested in other applications.
Purification :	The antibody was affinity-purified from rabbit antiserum by affinity-chromatography using epitope-specific immunogen.
Concentration :	1 mg/ml
Storage_stability :	-20°C/1 year
Msds :	MSDS_Antibody.pdf



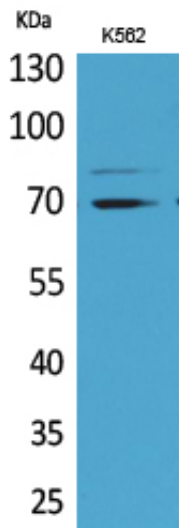
Other\_name : KEAP1; INRF2; KIAA0132; KLHL19; Kelch-like ECH-associated protein 1; Cytosolic inhibitor of Nrf2; INrf2; Kelch-like protein 19

---

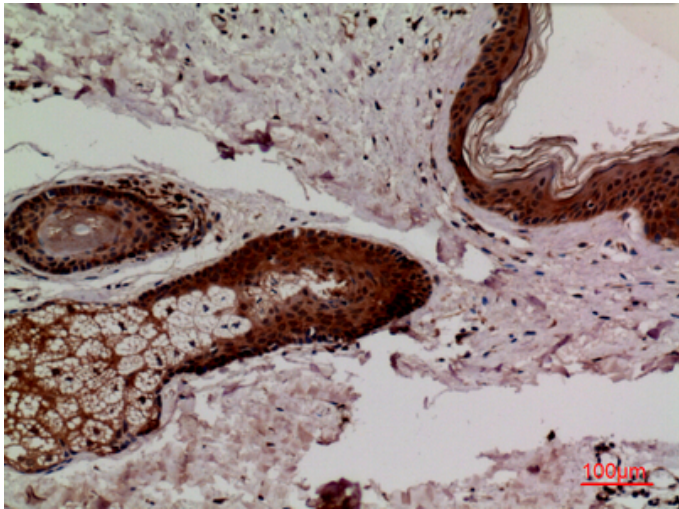
Molecular Weight : 70KD

---

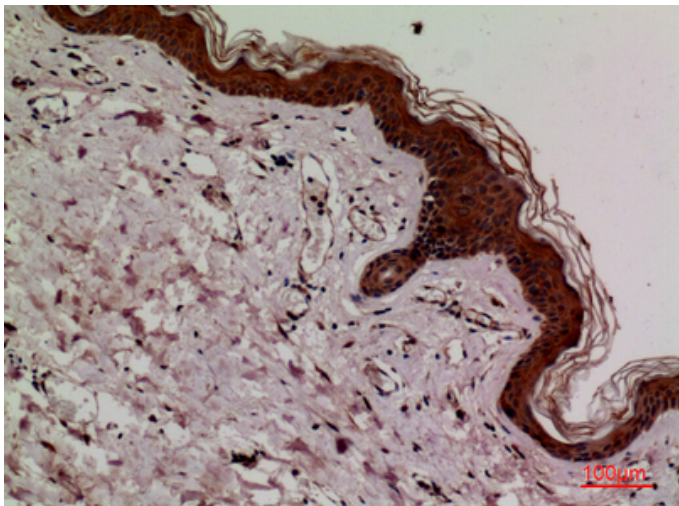
## Product Images



Western Blot analysis of K562 cells using Keap1 Polyclonal Antibody. Antibody was diluted at 1:1000. Secondary antibody was diluted at 1:20000

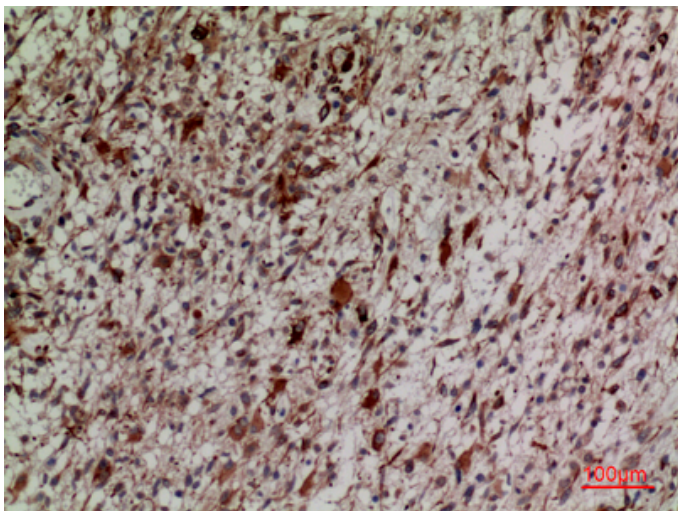
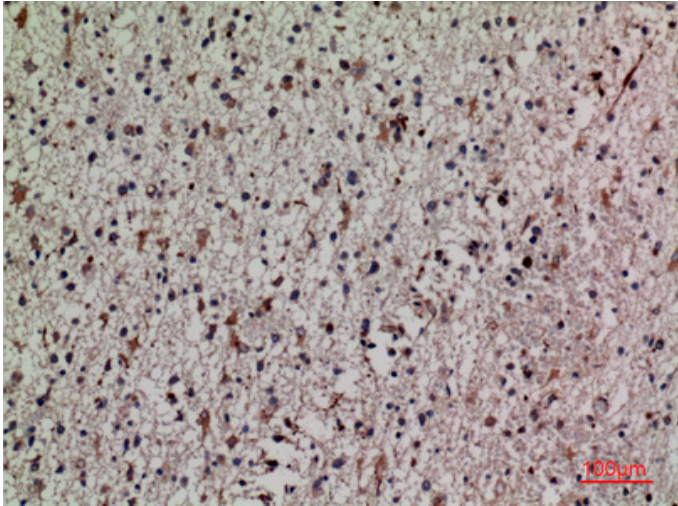


Immunohistochemical analysis of paraffin-embedded human-skin, antibody was diluted at 1:1000



Immunohistochemical analysis of paraffin-embedded human-skin, antibody was diluted at 1:100

Immunohistochemical analysis of paraffin-embedded human-brain, antibody was diluted at 1:100



Immunohistochemical analysis of paraffin-embedded human-brain, antibody was diluted at 1:100