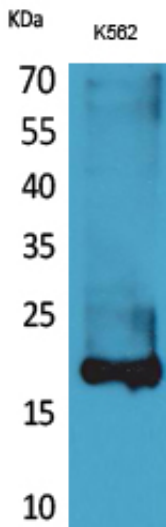


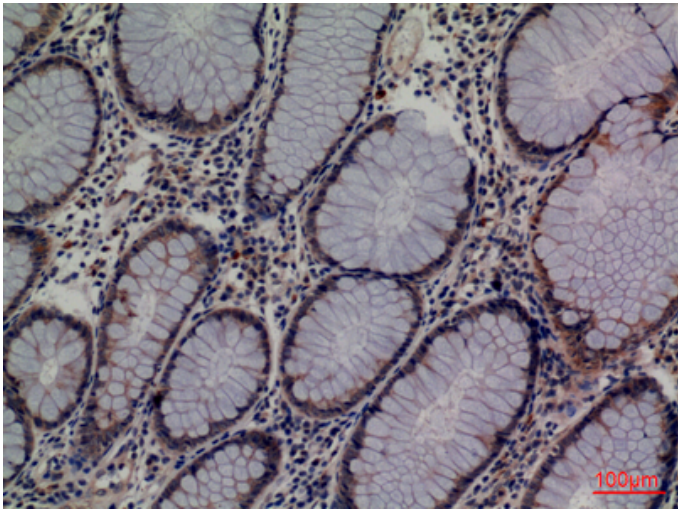
Lipocalin-1 Polyclonal Antibody

Catalog_no :	AT5219
Applications :	WB,IHC-p,ELISA
Reactivity :	Human
Category :	抗原抗体
Size :	100µg/50µg/20µg
Gene_name :	LCN1
Protein_name :	Lipocalin-1
Humangene_id :	3933
Humanswissprot_no :	P31025
Immunogen :	The antiserum was produced against synthesized peptide derived from the Internal region of human LCN1. AA range:11-60
Specificity :	Lipocalin-1 Polyclonal Antibody detects endogenous levels of Lipocalin-1 protein.
Formulation :	Liquid in PBS containing 50% glycerol, 0.5% BSA and 0.02% sodium azide.
Source :	Rabbit
Dilution :	Western Blot: 1/500 - 1/2000. IHC-p: 1:100-300 ELISA: 1/20000. Not yet tested in other applications.
Purification :	The antibody was affinity-purified from rabbit antiserum by affinity-chromatography using epitope-specific immunogen.
Concentration :	1 mg/ml
Storage_stability :	-20°C/1 year
Msds :	MSDS_Antibody.pdf
Other_name :	LCN1; VEGP; Lipocalin-1; Tear lipocalin; Tlc; Tear prealbumin; TP; Von Ebner gland protein; VEG protein
Molecular Weight :	21KD

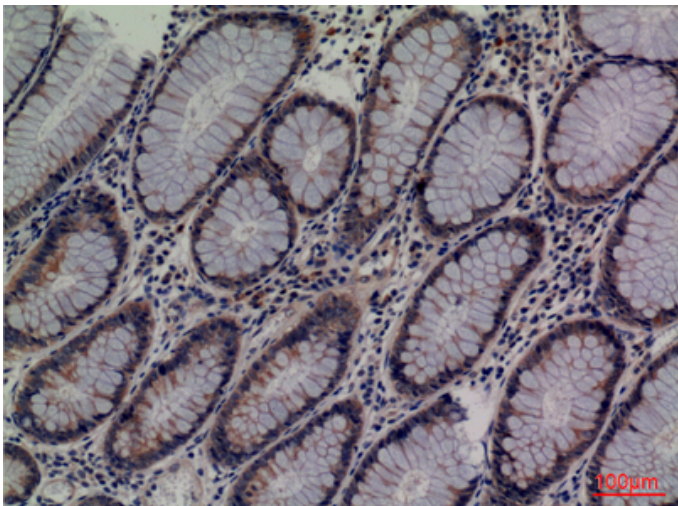
Product Images



Western Blot analysis of K562 cells using Lipocalin-1 Polyclonal Antibody.. Secondary antibody was diluted at 1:20000

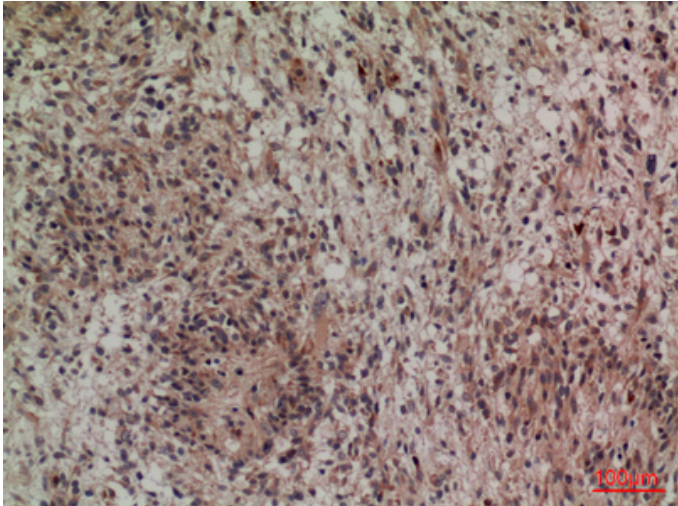


Immunohistochemical analysis of paraffin-embedded human-colon-cancer, antibody was diluted at 1:100

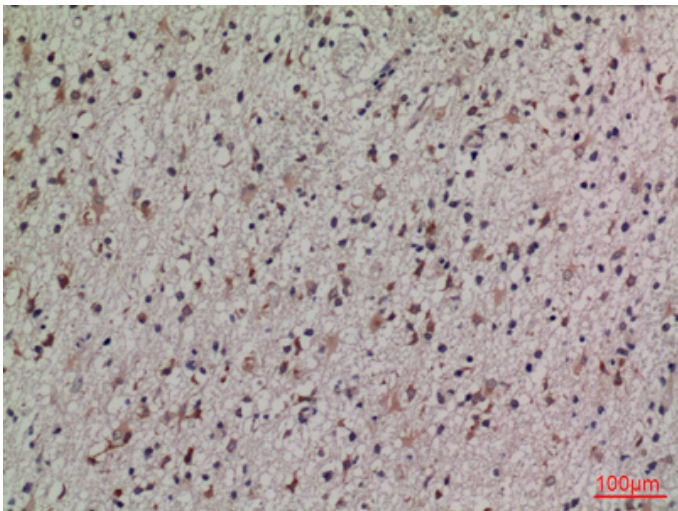


Immunohistochemical analysis of paraffin-embedded human-colon-cancer, antibody was diluted at 1:100

Immunohistochemical analysis of paraffin-embedded human-brain, antibody was diluted at 1:100



Immunohistochemical analysis of paraffin-embedded human-brain, antibody was diluted at 1:100



Immunohistochemical analysis of paraffin-embedded human-brain, antibody was diluted at 1:100

