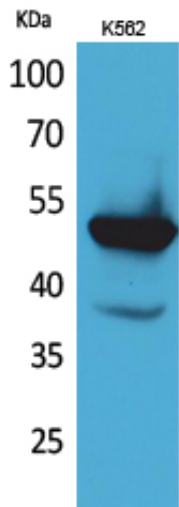


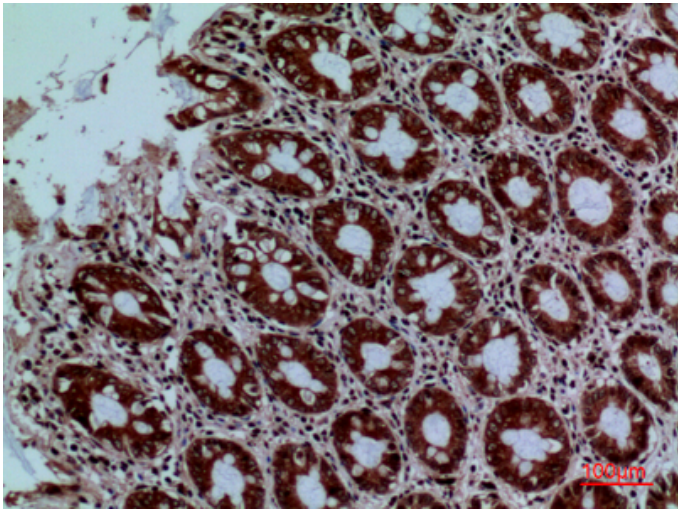
## Protein C Polyclonal Antibody

Catalog_no :	AT5221
Applications :	WB,IHC-p,ELISA
Reactivity :	Human
Category :	抗原抗体
Size :	100µg/50µg/20µg
Gene_name :	PROC
Protein_name :	Vitamin K-dependent protein C
Humangene_id :	<a href="#">5624</a>
Humanswissprot_no :	<a href="#">P04070</a>
Immunogen :	The antiserum was produced against synthesized peptide derived from the Internal region of human PROC. AA range:181-230
Specificity :	Protein C Polyclonal Antibody detects endogenous levels of Protein C protein.
Formulation :	Liquid in PBS containing 50% glycerol, 0.5% BSA and 0.02% sodium azide.
Source :	Rabbit
Dilution :	Western Blot: 1/500 - 1/2000. IHC-p: 1:100-300 ELISA: 1/20000. Not yet tested in other applications.
Purification :	The antibody was affinity-purified from rabbit antiserum by affinity-chromatography using epitope-specific immunogen.
Concentration :	1 mg/ml
Storage_stability :	-20°C/1 year
Msds :	MSDS_Antibody.pdf
Other_name :	PROC; Vitamin K-dependent protein C; Anticoagulant protein C; Autoprothrombin IIA; Blood coagulation factor XIV
Molecular Weight :	52KD

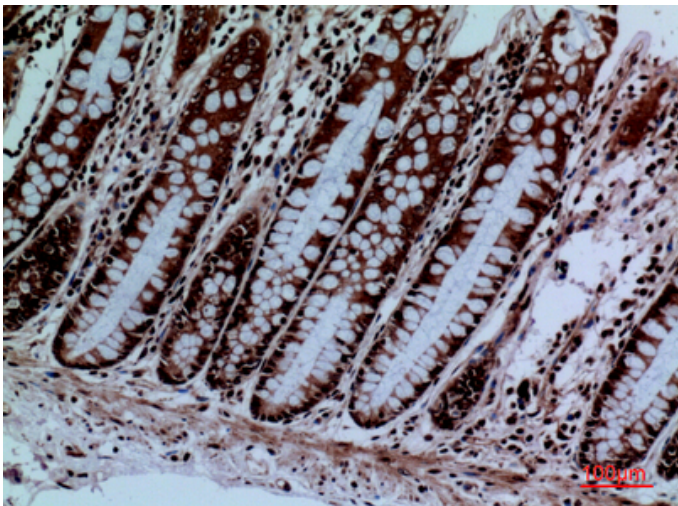
## Product Images



Western Blot analysis of K562 cells using Protein C Polyclonal Antibody.. Secondary antibody was diluted at 1:20000



Immunohistochemical analysis of paraffin-embedded human-colon, antibody was diluted at 1:100



Immunohistochemical analysis of paraffin-embedded human-colon, antibody was diluted at 1:100