



Layilin Polyclonal Antibody

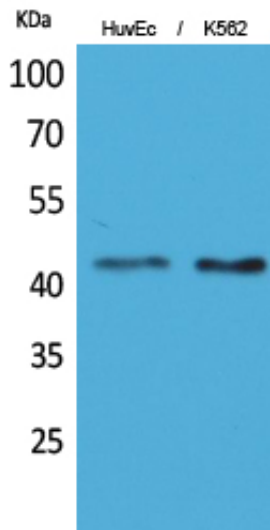
Catalog_no :	<u>AT5222</u>
Applications :	<u>WB,IHC-p,ELISA</u>
Reactivity :	<u>Human,Mouse,Rat</u>
Category :	<u>抗原抗体</u>
Size :	<u>100µg/50µg/20µg</u>
Gene_name :	<u>LAYN</u>
Protein_name :	<u>Layilin</u>
Humangene_id :	<u>143903</u>
Humanswissprot_no :	<u>Q6UX15</u>
Mousegene_id :	<u>244864</u>
Mouseswissprot_no :	<u>Q8C351</u>
Immunogen :	<u>The antiserum was produced against synthesized peptide derived from the Internal region of human LAYN. AA range:71-120</u>
Specificity :	<u>Layilin Polyclonal Antibody detects endogenous levels of Layilin protein.</u>
Formulation :	<u>Liquid in PBS containing 50% glycerol, 0.5% BSA and 0.02% sodium azide.</u>
Source :	<u>Rabbit</u>
Dilution :	<u>Western Blot: 1/500 - 1/2000. IHC-p: 1:100-300 ELISA: 1/20000. Not yet tested in other applications.</u>
Purification :	<u>The antibody was affinity-purified from rabbit antiserum by affinity-chromatography using epitope-specific immunogen.</u>
Concentration :	<u>1 mg/ml</u>
Storage_stability :	<u>-20°C/1 year</u>
Msds :	<u>MSDS_Antibody.pdf</u>
Other_name :	<u>LAYN; Layilin</u>
Molecular Weight :	<u>43KD</u>



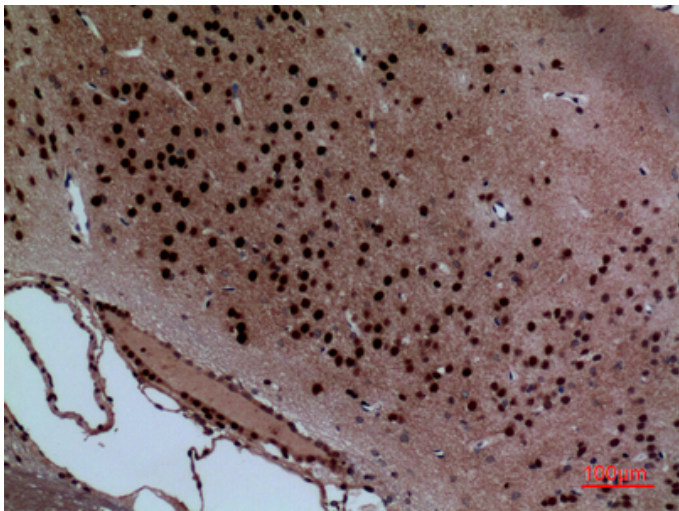
专注二抗产品

Biodragon旗下品牌

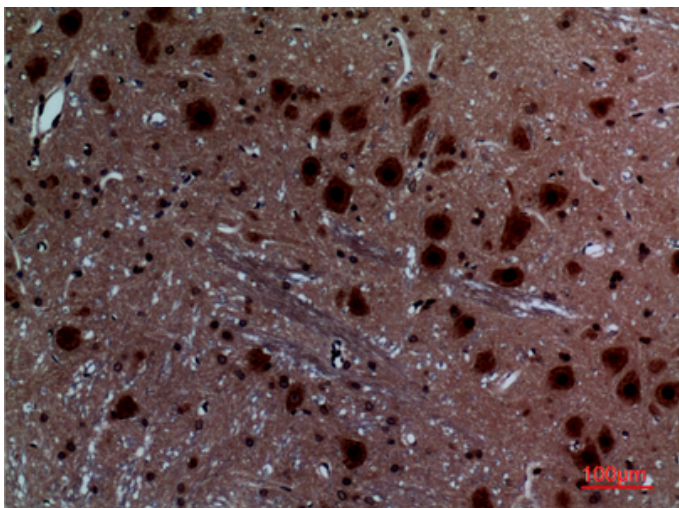
Product Images



Western Blot analysis of HuvEc, K562 cells using Layilin Polyclonal Antibody.. Secondary antibody was diluted at 1:20000

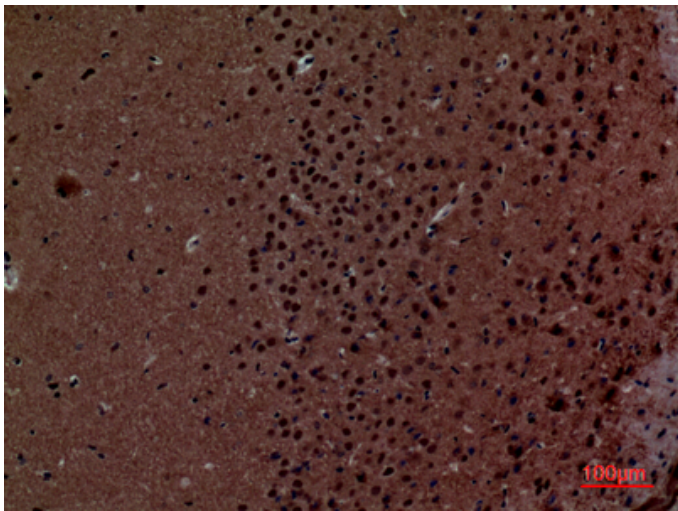
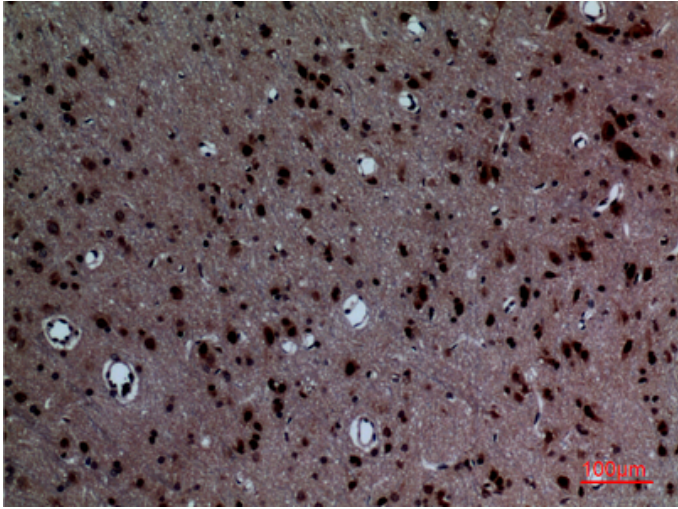


Immunohistochemical analysis of paraffin-embedded rat-brain, antibody was diluted at 1:100



Immunohistochemical analysis of paraffin-embedded rat-brain, antibody was diluted at 1:100

Immunohistochemical analysis of paraffin-embedded rat-brain, antibody was diluted at 1:100



Immunohistochemical analysis of paraffin-embedded mouse-brain, antibody was diluted at 1:100