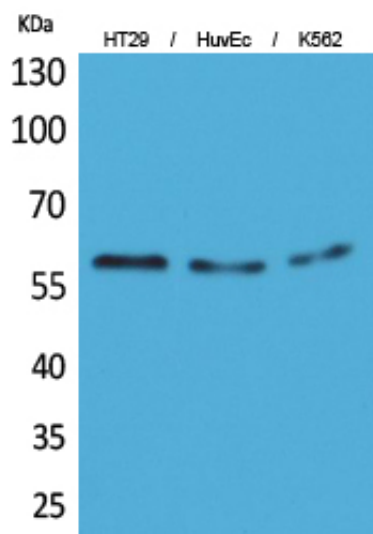


CYP11B1/2 Polyclonal Antibody

Catalog_no :	AT5224
Applications :	WB,ELISA
Reactivity :	Human
Category :	抗原抗体
Size :	100µg/50µg/20µg
Gene_name :	CYP11B1/CYP11B2
Protein_name :	Cytochrome P450 11B1 mitochondrial/Cytochrome P450 11B2 mitochondrial
Humangene_id :	1584
Humanswissprot_no :	P15538
Immunogen :	The antiserum was produced against synthesized peptide derived from the N-terminal region of human CYP11B1/2. AA range:61-110
Specificity :	CYP11B1/2 Polyclonal Antibody detects endogenous levels of CYP11B1/2 protein.
Formulation :	Liquid in PBS containing 50% glycerol, 0.5% BSA and 0.02% sodium azide.
Source :	Rabbit
Dilution :	Western Blot: 1/500 - 1/2000. ELISA: 1/20000. Not yet tested in other applications.
Purification :	The antibody was affinity-purified from rabbit antiserum by affinity-chromatography using epitope-specific immunogen.
Concentration :	1 mg/ml
Storage_stability :	-20°C/1 year
Msds :	MSDS_Antibody.pdf
Other_name :	CYP11B1; S11BH; Cytochrome P450 11B1, mitochondrial; CYPXIB1; Cytochrome P-450c11; Cytochrome P450C11; Steroid 11-beta-hydroxylase; CYP11B2; Cytochrome P450 11B2, mitochondrial; Aldosterone synthase; ALDOS; Aldosterone-synthesizing enzyme; CYPXIB2; Cytochrome P-450Aldo; Cytochrome P-450C18; Steroid 18-hydroxylase
Molecular Weight :	58KD

Product Images



Western Blot analysis of HT29, HuvEc, K562 cells using CYP11B1/2 Polyclonal Antibody.. Secondary antibody was diluted at 1:20000