

SHIP-2 Polyclonal Antibody

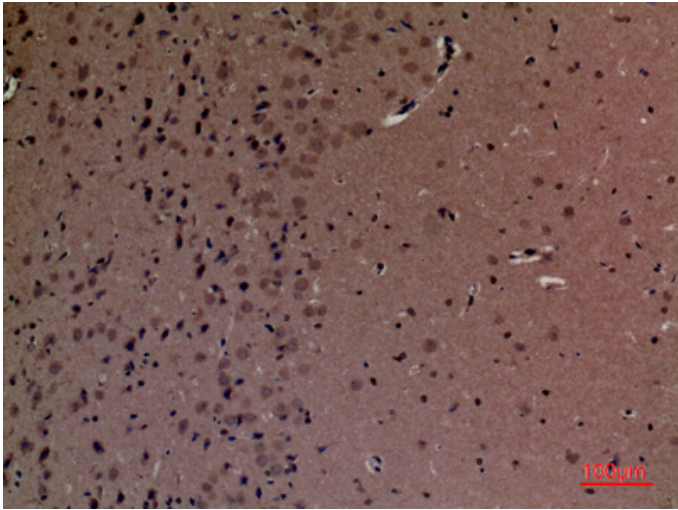
Catalog_no :	AT5226
Applications :	WB,IHC-p,ELISA
Reactivity :	Human,Mouse,Rat
Category :	抗原抗体
Size :	100µg/50µg/20µg
Gene_name :	INPPL1
Protein_name :	Phosphatidylinositol 3,4,5-trisphosphate 5-phosphatase 2
Humangene_id :	3636
Humanswissprot_no :	O15357
Mousegene_id :	16332
Mouseswissprot_no :	Q6P549
Ratgene_id :	65038
Ratswissprot_no :	Q9WVR3
Immunogen :	The antiserum was produced against synthesized peptide derived from the Internal region of human INPPL1. AA range:351-400
Specificity :	SHIP-2 Polyclonal Antibody detects endogenous levels of SHIP-2 protein.
Formulation :	Liquid in PBS containing 50% glycerol, 0.5% BSA and 0.02% sodium azide.
Source :	Rabbit
Dilution :	Western Blot: 1/500 - 1/2000. IHC-p: 1:100-300 ELISA: 1/20000. Not yet tested in other applications.
Purification :	The antibody was affinity-purified from rabbit antiserum by affinity-chromatography using epitope-specific immunogen.
Concentration :	1 mg/ml
Storage_stability :	-20°C/1 year
Msds :	MSDS_Antibody.pdf



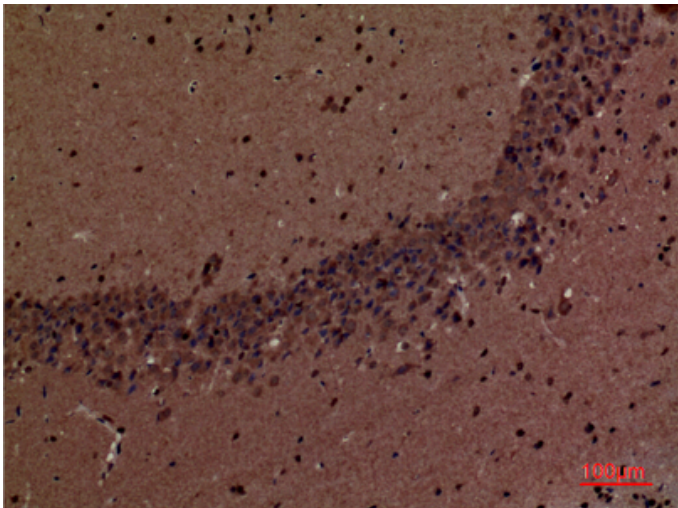
Other_name : INPPL1; SHIP2; Phosphatidylinositol 3,4,5-trisphosphate 5-phosphatase 2; Inositol polyphosphate phosphatase-like protein 1; INPPL-1; Protein 51C; SH2 domain-containing inositol 5'-phosphatase 2; SH2 domain-containing inositol phosphatase 2; SHIP-2

Molecular Weight : 130KD

Product Images



Immunohistochemical analysis of paraffin-embedded mouse-brain, antibody was diluted at 1:100



Immunohistochemical analysis of paraffin-embedded mouse-brain, antibody was diluted at 1:100