



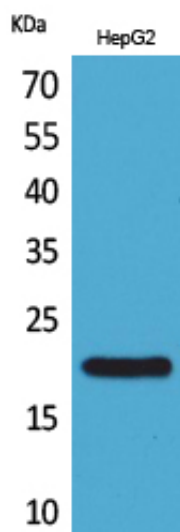
VHR Polyclonal Antibody

Catalog_no :	AT5228
Applications :	WB,IHC-p,ELISA
Reactivity :	Human,Mouse,Rat
Category :	抗原抗体
Size :	100µg/50µg/20µg
Gene_name :	DUSP3
Protein_name :	Dual specificity protein phosphatase 3
Humangene_id :	1845
Humanswissprot_no :	P51452
Mousegene_id :	72349
Mouseswissprot_no :	Q9D7X3
Immunogen :	The antiserum was produced against synthesized peptide derived from the C-terminal region of human DUSP3. AA range:136-185
Specificity :	VHR Polyclonal Antibody detects endogenous levels of VHR protein.
Formulation :	Liquid in PBS containing 50% glycerol, 0.5% BSA and 0.02% sodium azide.
Source :	Rabbit
Dilution :	Western Blot: 1/500 - 1/2000. IHC-p: 1:100-300 ELISA: 1/20000. Not yet tested in other applications.
Purification :	The antibody was affinity-purified from rabbit antiserum by affinity-chromatography using epitope-specific immunogen.
Concentration :	1 mg/ml
Storage_stability :	-20°C/1 year
Msds :	MSDS_Antibody.pdf
Other_name :	DUSP3; VHR; Dual specificity protein phosphatase 3; Dual specificity protein phosphatase VHR; Vaccinia H1-related phosphatase; VHR
Molecular	21KD

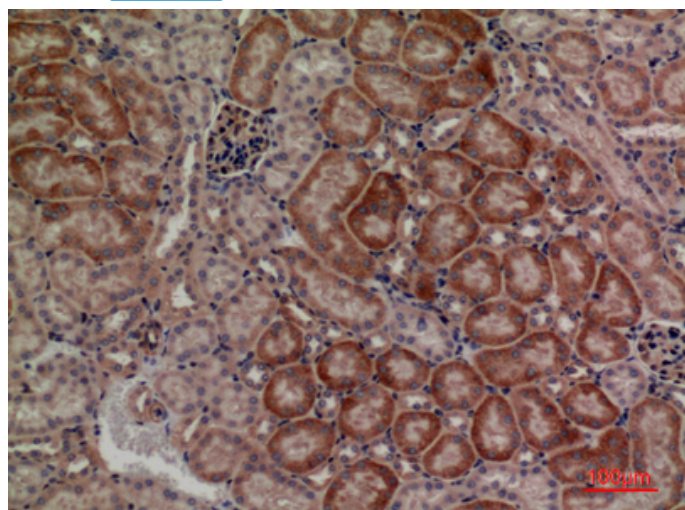


Weight :

Product Images



Western Blot analysis of HepG2 cells using VHR Polyclonal Antibody.. Secondary antibody was diluted at 1:20000 cells nucleus extracted by Minute TM Cytoplasmic and Nuclear Fractionation kit (SC-003, Inventbiotech, MN, USA).



Immunohistochemical analysis of paraffin-embedded mouse-kidney, antibody was diluted at 1:100