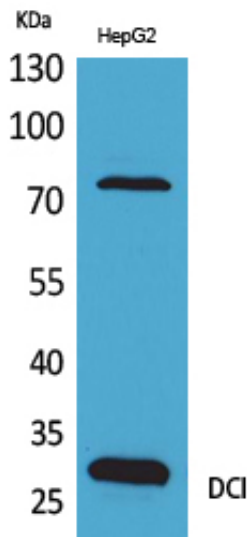




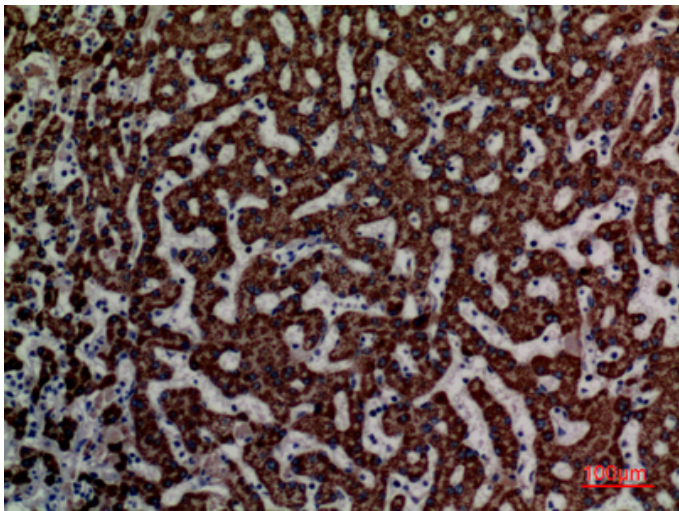
## DCI Polyclonal Antibody

Catalog_no :	AT5229
Applications :	WB,IHC-p,ELISA
Reactivity :	Human
Category :	抗原抗体
Size :	100µg/50µg/20µg
Gene_name :	ECI1
Protein_name :	Enoyl-CoA delta isomerase 1 mitochondrial
Humangene_id :	<a href="#">1632</a>
Humanswissprot_no :	<a href="#">P42126</a>
Immunogen :	Synthesized peptide derived from DCI . at AA range: c-terminal
Specificity :	DCI Polyclonal Antibody detects endogenous levels of DCI protein.
Formulation :	Liquid in PBS containing 50% glycerol, 0.5% BSA and 0.02% sodium azide.
Source :	Rabbit
Dilution :	Western Blot: 1/500 - 1/2000. IHC-p: 1:100-300 ELISA: 1/20000. Not yet tested in other applications.
Purification :	The antibody was affinity-purified from rabbit antiserum by affinity-chromatography using epitope-specific immunogen.
Concentration :	1 mg/ml
Storage_stability :	-20°C/1 year
Msds :	MSDS_Antibody.pdf
Other_name :	ECI1; DCI; Enoyl-CoA delta isomerase 1, mitochondrial; 3,2-trans-enoyl-CoA isomerase; Delta(3),Delta(2)-enoyl-CoA isomerase; D3,D2-enoyl-CoA isomerase; Dodecenoyl-CoA isomerase
Molecular Weight :	30KD

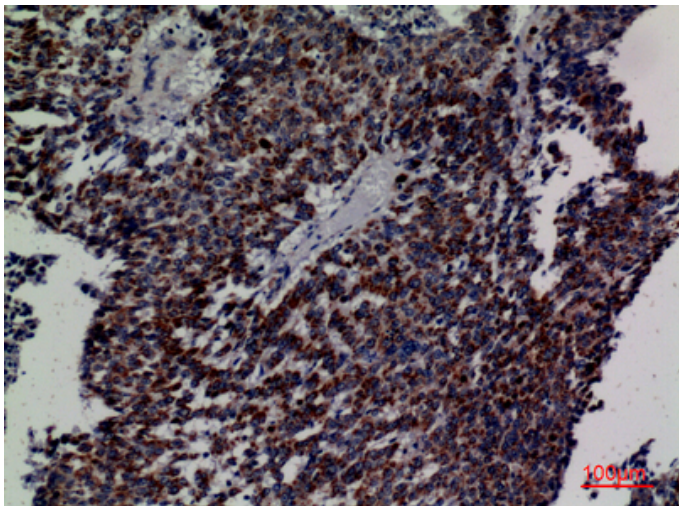
## Product Images



Western Blot analysis of HepG2 cells using DCI Polyclonal Antibody.. Secondary antibody was diluted at 1:20000



Immunohistochemical analysis of paraffin-embedded human-liver, antibody was diluted at 1:100



Immunohistochemical analysis of paraffin-embedded human-lung-cancer, antibody was diluted at 1:100

Immunohistochemical analysis of paraffin-embedded human-lung-cancer, antibody was diluted at 1:100

