

Neuropilin-2 Polyclonal Antibody

Catalog_no :	AT5230
Applications :	WB,IHC-p,ELISA
Reactivity :	Human,Mouse,Rat
Category :	抗原抗体
Size :	100µg/50µg/20µg
Gene_name :	NRP2
Protein_name :	Neuropilin-2
Humangene_id :	8828
Humanswissprot_no :	O60462
Mousegene_id :	18187
Mouseswissprot_no :	O35375
Ratgene_id :	81527
Ratswissprot_no :	O35276
Immunogen :	The antiserum was produced against synthesized peptide derived from the Internal region of human NRP2. AA range:791-840
Specificity :	Neuropilin-2 Polyclonal Antibody detects endogenous levels of Neuropilin-2 protein.
Formulation :	Liquid in PBS containing 50% glycerol, 0.5% BSA and 0.02% sodium azide.
Source :	Rabbit
Dilution :	Western Blot: 1/500 - 1/2000. IHC-p: 1:100-300 ELISA: 1/20000. Not yet tested in other applications.
Purification :	The antibody was affinity-purified from rabbit antiserum by affinity-chromatography using epitope-specific immunogen.
Concentration :	1 mg/ml
Storage_stability :	-20°C/1 year
Msds :	MSDS_Antibody.pdf

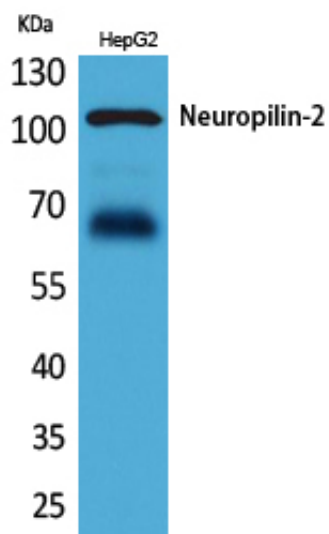


Other_name : NRP2; VEGF165R2; Neuropilin-2; Vascular endothelial cell growth factor 165 receptor 2

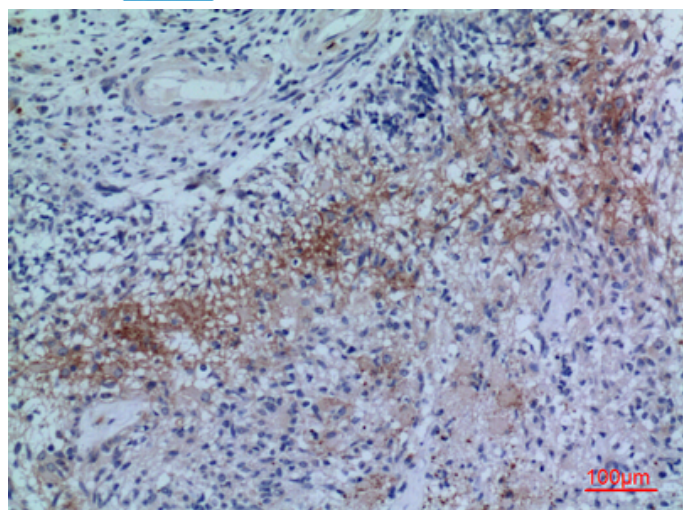
Molecular Weight : 100KD

Weight :

Product Images



Western Blot analysis of HepG2 cells using Neuropilin-2 Polyclonal Antibody.. Secondary antibody was diluted at 1:20000



Immunohistochemical analysis of paraffin-embedded human-brain, antibody was diluted at 1:100