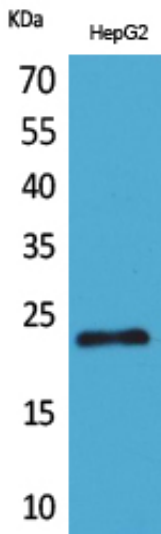




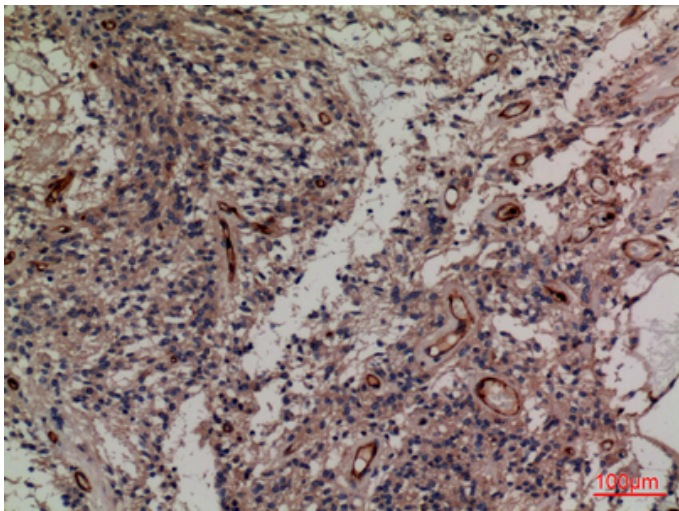
SNAP 23 Polyclonal Antibody

Catalog_no :	AT5231
Applications :	WB,IHC-p,ELISA
Reactivity :	Human
Category :	抗原抗体
Size :	100µg/50µg/20µg
Gene_name :	SNAP23
Protein_name :	Synaptosomal-associated protein 23
Humangene_id :	8773
Humanswissprot_no :	O00161
Immunogen :	The antiserum was produced against synthesized peptide derived from the C-terminal region of human SNAP23. AA range:151-200
Specificity :	SNAP 23 Polyclonal Antibody detects endogenous levels of SNAP 23 protein.
Formulation :	Liquid in PBS containing 50% glycerol, 0.5% BSA and 0.02% sodium azide.
Source :	Rabbit
Dilution :	Western Blot: 1/500 - 1/2000. IHC-p: 1:100-300 ELISA: 1/20000. Not yet tested in other applications.
Purification :	The antibody was affinity-purified from rabbit antiserum by affinity-chromatography using epitope-specific immunogen.
Concentration :	1 mg/ml
Storage_stability :	-20°C/1 year
Msds :	MSDS_Antibody.pdf
Other_name :	SNAP23; Synaptosomal-associated protein 23; SNAP-23; Vesicle-membrane fusion protein SNAP-23
Molecular Weight :	25KD

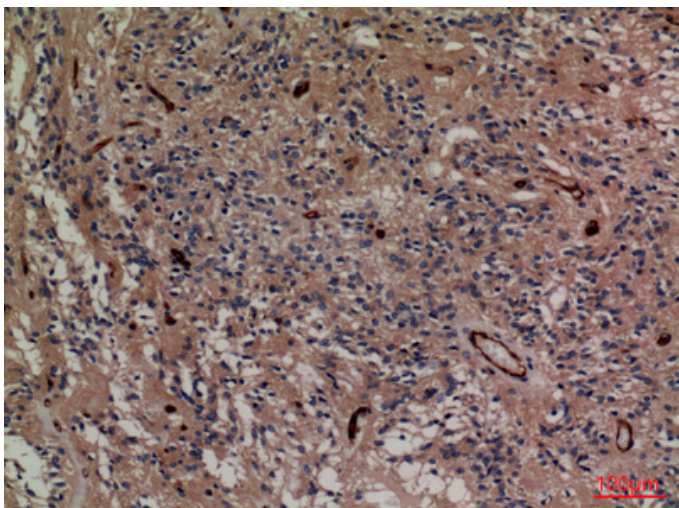
Product Images



Western Blot analysis of HepG2 cells using SNAP 23 Polyclonal Antibody.. Secondary antibody was diluted at 1:20000



Immunohistochemical analysis of paraffin-embedded human-ovary-cancer, antibody was diluted at 1:100



Immunohistochemical analysis of paraffin-embedded human-ovary-cancer, antibody was diluted at 1:100

Immunohistochemical analysis of paraffin-embedded mouse-brain, antibody was diluted at 1:100

